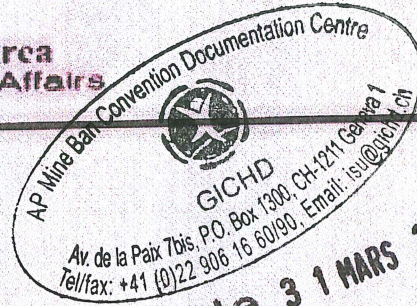


ሃገረ ኢርትራ  
ግዛት ጉዳይ ግዛት



دولة إرتريا  
وزارة الشؤون الخارجية

The State of Eritrea  
Ministry of Foreign Affairs



Reçu le 31 MARS 2011

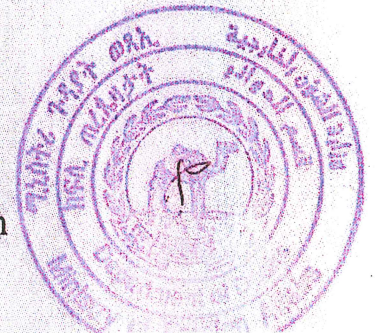
Date: 31.03.2011

Ref:- Des/038/2011

The Ministry of Foreign Affairs of the State of Eritrea, Department of Desks, presents its compliments to the Office of the President of the 10<sup>th</sup>MSP of the Convention on the Prohibition of the Use, Stockpiling, Production and Transfer of the AP Mines and on their Destruction and would like to enclose the Report on the of Request for extension of the deadline for fulfillment of obligations under Article 5 of the Convention on the Prohibition of the Use, Stockpiling, Production and Transfer of Anti-Personnel Mines and on Their Destruction through the ISU.

The Department of Desks avails itself of this opportunity to renew to the Office of the President of the 10<sup>th</sup>MSP of the Convention on the Prohibition of the Use, Stockpiling, Production and Transfer of the AP Mines and on their Destruction assurances of its highest consideration.

Mr. Gazmend Turdiu  
President of the 10<sup>th</sup>MSP of the Convention on the Prohibition  
Of the Use, Stockpiling, Production and Transfer of the AP Mines and on  
Their Destruction



**Request for extension of the deadline for fulfillment of obligations under Article 5 of the Convention on the Prohibition of the Use, Stockpiling, Production and Transfer of Anti-Personnel Mines and on Their Destruction**

**Eritrea**

**March 2011**

**POINT OF CONTACT:**

**Habtom Seghid  
Deputy General Manager  
Eritrean Demining Authority  
P.O. Box 4703  
Asmara, Eritrea  
Tel: (+291-1) 127261/201766/200915  
Fax: (+291-1) 201910  
Email: [habtomseghid@yahoo.com](mailto:habtomseghid@yahoo.com)**

## CONTENT

### 1. Executive Summary.....

### 2. Detailed Narrative

1. Origins of the Article 5 implementation challenge.
2. Nature and extent of the original Article 5 challenge, quantitative aspects.
3. Nature and extent of the original Article 5 challenge, qualitative aspects.
4. Methods used to identify mined areas.
5. National demining structure.
6. Nature and extent of progress made, quantitative aspects.
7. Nature and extent of progress made, qualitative aspects.
8. Methods and standards used to release areas.
9. Methods and standards of controlling and assuring quality.
10. Resources made available to support progress made to date.
11. Circumstances that impeded compliance fro 10 year.
12. Humanitarian, economic, social and environmental implications.
13. The remaining Article 5 challenge, quantitative aspects.
14. The remaining Article 5 challenge, qualitative aspects.
16. Amount of time requested.
17. Detailed work plan.
18. Institutional, human resources and material capacity.

<b>Annex 1</b>	<b>Eritrea Map</b>
<b>Annex 2</b>	<b>LIS Survey Results</b>
<b>Annex 3</b>	<b>Organization Survey Results</b>
<b>Annex 4</b>	<b>Progress to date</b>
<b>Annex 5</b>	<b>EDF example registry</b>

## I. EXECUTIVE SUMMARY

Eritrea has been the setting for many major armed conflicts in the last century. The conflicts waged over the last several decades have left a massive legacy of Landmines and Explosive Remnants of war (ERW) making Eritrea one of the countries in the world hardest hit by this scourge. During the Second World War the British and Italian armies fought in Eritrea leaving behind a significant amount of unexploded ordinance (UXO). After the British victory in the Horn of Africa, the United Nations decided in 1952 to make Eritrea an autonomous entity federated with Ethiopia. Ethiopia subsequently annexed Eritrea in 1962, which sparked a struggle for independence that lasted 30 years since 1961 until 1991 and culminated in Eritrea's formal independence in 1993. The conflict resulted in considerable landmines and UXO contamination and the laying of numerous non-conventional hazardous ordnances in areas near military camps, roads, battle zones, strongholds of cities and populated areas, farmland and water resources. In 1998 a border conflict characterized by trench warfare broke out between Eritrea and Ethiopia resulting in a two-year war and the laying of defensive minefields by both armies along above 1,000 Km border.

The population groups hardest hit by Landmines and UXO are rural inhabitants, nomadic people, refugees and internally displaced persons (IDPs) from the border conflict, herders and children. Beyond the killing and maiming of people, landmines and ERW had a noticeable effect on food security and the general development situation. The vast majority of the mine impacted communities in Eritrea depend on farming and herding for their livelihoods while most farmlands and pasture lands were blocked with laid mines and scattered ERW. Likewise, a number of projects, mainly infrastructure projects such as roads, schools, clinics, and dams began being carried out since the liberation of the country. The impediments of landmines and UXO to such constructions and other development projects were huge especially in the areas of Debub and Gash Barka regions until clearance was conducted.

The Landmine Impact Survey identified over 5,000 Land mines and UXO victims including 295 new victims (within the 24 months of the LIS interviews). This information is limited to the communities which reported being contaminated by landmines. Such information is detailed in the National Survey of people with disabilities prepared by the Ministry of Labor and Human Welfare. However, detailed information on casualties had not been kept until 2000. According to the Eritrean Demining Authority database, 739 new victims have been recorded since 2001.

The first nationwide effort to identify the landmine and UXO contamination was through a Landmine Impact Survey (LIS) which began in March 2002 and concluded in June 2004 resulting in the identification of 914 Suspected Hazard Areas (SHAs) measuring 129 km<sup>2</sup> in the following Zobas and sub-zobas. Of these 914 SHAs, 752 SHAs affecting 411 communities were identified as contaminated by AP mines, a mix of AP mines and AT mines or a mix of AP mines, AT mines, and UXO in Anseba (203), Debub (112), Debubawi Keih Bahri (12), Gash Barka (107), Maekela (72), and Semienawi Keih Bahri (245).

Prior to the LIS, incomplete gathered data records were kept by UNMEE MACC from different sources. Besides the Eritrean Defense Forces submitted records, several organizations contributed in conducting general surveys in specific areas mainly in the Temporary Security Zone (TSZ), an area of 25 kilometers wide, largely within Eritrea, and about 1000 kilometers long along the border of Eritrea and Ethiopia, which identified 516 mined areas in the following Zobas of Eritrea: Anseba, Debub, Debubawi keih bahri, Gash Barka, Maekel and Semienawi keih bahri. However, since the 516 mined

areas surveyed prior to the LIS overlapped with the country wide LIS findings, the Eritrean Demining Authority (EDA) employs these findings as their baseline.

It is also important to note that 170 areas could not be accessed due to access (140) and security (30) reasons (Some of these in Ethiopian side). Additionally, although it was recognized that the LIS had several overlaps with the initial surveys and past clearance activities and that there were imperfections with the data collected, it is the most comprehensive picture available of the anti-personnel mine contamination throughout Eritrea. The principal weakness of the LIS was the lack of detail concerning the SHAs and therefore requiring a resurvey in order to better quantify the remaining challenge in Eritrea.

In response to the impact of these weapons from the very beginning after liberation in 1991, the Eritrean government gave the greatest attention and focus for the clearance of landmines. The military field engineers were deployed to the whole impacted areas of the country and diligently conducted a massive task to clear or at least alleviate the impact of landmines and protect civilian people from suffering followed by its consequences.

In 1995 the initial humanitarian activity started in Eritrea with the agreement made between government of the state of Eritrea and State Department of the USA with an indigenous programmer organization called Eritrean Humanitarian Demining Program (EHDP) which started to function in Eritrea until the unfortunate border conflict war broke out in 1998. Consequently the landmine and other ERW contamination escalated to its worst with its effects inflicting great losses and harms on civilian life, socio economic and psychological aspects.

After the border conflict war was officially concluded with the signing of the “agreement on the cessation of hostilities” by both parties on December 2000, there was an increase in Humanitarian Mine Action activities in Eritrea which was conducted by one National Mine Action called Eritrean Demining Agency and a number of external organizations such as DCA, Halo Trust, RONCO, DDG, MAT, UN MACC and the UN contingencies etc. However, compared to the huge amount of funds that they had at their disposal the results they achieved in their production was minimal. Moreover, the activities of these organizations were not in compliance with the national development policy and strategy.

In August 2001, Eritrea became a party to the Convention on the Prohibition of the Use, Stockpiling, Production and Transfer of Anti-Personnel Mines and on Their Destruction and is actively engaged in fulfilling its obligations under the Convention.

With the start of Humanitarian Mine Action Programs, it was necessary to establish a National Mine Action Authority to have the primary responsibility of coordinating and managing Mine action and develop policies, standards, procedures and guidelines for Mine Action programs in Eritrea. Therefore, the Eritrean government by proclamation 123/2002 established the Eritrean Demining Authority in 2002 with the task of clearing landmine and returning areas to productive use, educating Eritrean civilian of the dangers of mines and on ways to identify and report them; clear mined areas to facilitate the repatriation of internally displaced persons and refugees and integrate mine action into the national development plans.

This led to the restructuring of Mine Action in the country. The restructuring was achieved with the establishment of the Eritrean Demining Authority. The consequences of the changes caused a chain of events that led to phasing out the contract of most international organizations and left the country. This was followed by the suspension of the Mine Action Capacity Building Program, which was executed by the UNDP, in October 2005. Despite this fact, the EDA with limited Mine Action Capacity Building Program support of the UNDP resumed the Humanitarian Demining program in 2007. Tasks carried out at this moment were: mapping, marking of affected areas, Mine Risk Education to the former IDPs and Mine Clearance activities on a limited scale more focused in the IDPs/Expellees return/resettlement areas. Due to shortage of funds, however, the humanitarian challenges still remained in making land safe for agricultural use to support food security, building social support systems for the most vulnerable population groups, and creating linkages with recovery, reconstruction and development of social and economic infrastructure.

Immediately after Eritrea's liberation in 1991 as well as right after the conclusion of the 1998-2000 border conflict with Ethiopia, army engineers carried out massive landmine/UXO clearance in the affected areas (estimated amount of clearance). Soon after the signing of the Cessation of Hostilities Agreement between Eritrea and Ethiopia in December 2000, preparations for humanitarian action went underway and became operational in 2001. Unfortunately, the management of data was not well coordinated between the different entities, was not as sophisticated and as disciplined as it should have been.

From the period of 2001 – 2010 a total of 79 areas have been cleared measuring 54,735,011 square meters, 30,832,678 square meters of which was cleared after the LIS, culminating in the destruction of 10,296 anti-personnel mines, 998 anti-tank mines and 69,401 UXO. All of this progress has been made in communities identified by the LIS as being affected by mines.

This progress indicated above is an accumulative result achieved besides the EDA activities, by a number of nongovernmental organizations and commercial companies which were engaged in mine clearance in Eritrea (Eritrean Demining Agency, Danish Church Aid, Danish Demining Group, HALO Trust, RONCO/EDA, RONCO, Mine Awareness Trust, UNMEE Contingencies) using a wealth of mine clearance tools including manual, mechanical, and dog.

Following the creation of the Eritrean Demining Authority and the departure of these organizations in 2007 as well as the subsequent drop of significant funding, Eritrea has been employing solely manual clearance. This is seen as the best method given that it is the cheapest and most effective option to carry out mine clearing operations with the limited resources and capacity that is locally available.

For carrying out manual mine clearance Eritrea has standards and standard operating procedures in place which take as their basis the International Mine Action Standards (IMAS), prepared with the aim to provide all personnel involved in landmine and UXO clearance in Eritrea with a reference for training, operations and deployment. The SOP has been developed according high international standard, best practices and in line with United Nations International Standards of mine action. The safety principles displayed in the SOP are valid for any person, visitor or otherwise who may visit any EDA task site.

In the mine clearing program, the Eritrean Demining Authority through its Operations and QA/QC departments carries out the responsibility of all aspects of quality assurance and quality control standards according to the Eritrean Mine Action standard (SOP). All individuals deployed or involved in the humanitarian mine clearing task are trained and aware to be responsible for quality assurance. Quality checks are included at all levels of mine clearance tasks and are the foundation on which

confidence in clearance is based and are carried out by the team Leader, the site supervisor, and by EDA external Q/A department by checking 20% of the cleared area.

Within each Mine Clearance Agency operating in Eritrea, the Team Leader or Supervisor has the overall responsibility for monitoring operation. To ensure that quality requirements are fulfilled and can provide confidence that quality requirements are met, the EDA External QA Department through QA Team Supervisor carries out the final checking, observing the work against each criterion described in both the monitoring checklists, which are the Generic Site Monitoring Checklist and the Manual Site Monitoring Checklist prepared by the Demining Authority.

After completion of mine clearance and EOD tasks, all appropriate records are to be completed checked and signed by the operations supervisor and then a clearance certificate is prepared by EDA and agreed to by local authorities for land release. Any non conformances identified during the task are to have been checked and verified before the final report is released to the local authorities. In the clearance report, map name, map reference, cleared area, name of clearing organization, quality assurance carried by who etc. are inclusively indicated.

Based on the data recorded by different surveys, it is apparent that much remains to be done for Eritrea to fulfill its obligations under Article 5.

The number previously identified and recorded mined area includes the 516 identified through EDF registries and survey carried out by different NGOs as well as the 752 identified by the LIS. As mentioned earlier the LIS data overlaps these areas and is being taken as the baseline for resurvey operations.

At the present time, the EDA does not have the necessary information to produce a detailed plan for completion of its Article 5 obligations but seeks to proceed to carry out additional surveys to precisely define the remaining challenge.

Of the 411 communities identified as impacted a total of 265 are pending resurvey.

During the years of operation under the UNMEE MACC a number of resources were provided. The EDA does not have exact figures before the establishment of the Eritrean Demining Authority in 2003 given that the funds were not administered by the Eritrean National Authority and did not receive reports on the spending by organizations.

There are a number of circumstances why Eritrea has not been able to fulfill its obligations under article 5 obligations;

- Amount of contamination: As indicated in the first section, the contamination problem in Eritrea covers a large surface area and extends throughout the country. The number of conflicts has left a great number of landmines and UXO.
- Lack of funding: As indicated in the previous statements, the external assistance acquired since the start of the program and currently available is insignificant compared to the remaining task of mine action. We need necessary budget to conduct technical survey and to expand our teams to promote mine clearing operations. Therefore unless significant external support is acquired, it will take much longer to complete the national mine clearing program than was planned initially.

- Equipment shortage: Eritrea has a great amount of personnel trained in humanitarian demining. However, the available equipment does not allow for deployment of our full capacity.
- Lack of efficient activities and coordination during the participation of several NGOs in the early stage of humanitarian demining operations.

Given the above, Eritrea is requesting a period of **Three years (February 2012 – February 2015)** in order to conduct non-technical and technical survey to identify the exact remaining challenges and develop a concrete plan for fulfillment of Eritrea's Article 5 obligations.

Some key elements of the extension plan are to:

Over the course of the extension period Eritrea will keep the States Parties informed through its Article 7 transparency reports as well as through updates at Convention meetings and will submit a second request with a detailed plan on the implementation of Article 5 on 31 March 2014.

In the moment Eritrea is drafting a national strategic plan 2011 to 2015 which will be completed in April 2011. In this strategic plan our main objectives are but not limited to:

- Make area reduction by at least 50 % conducting effective technical and non technical surveys until 2014
- To clean the remaining High and Medium mine impacted areas until 2015
- Continue clearance of land mines and UXO for the low impacted areas.
- Continue to conduct national MRE activities to sensitize communities to reduce new casualties until full clearance is assured

Human resources proposed to be available for our strategic plan and will be effective by mid 2011 are the following;

- 5 x 64 person demining teams adding one team in each year the demining teams to be expanded to 8 teams in 2014.
- 3 x 5 person survey teams.
- 3 x 5 person EOD teams
- 2 x 5 person Q.A teams.
- 10 x 4 person MRE teams
- 150 community volunteers for MRE in 2011 and adding 50 person each year to expand the number to 300 in 2014.

The total budget assessed for the underway being prepared strategic plan (2011-2015) is **8.5 million USD**. Out of this the government is committed to cover the monthly salary payment for all field teams which is around **5 million USD**.



## 1. Origins of the Article 5 implementation challenge

Eritrea has been the setting for many major armed conflicts in the last century. The conflicts waged over the last several decades have left a massive legacy of Landmines and Explosive Remnants of war (ERW) making Eritrea one of the countries in the world hardest hit by this scourge.

During the Second World War the British and Italian armies fought in Eritrea leaving behind a significant amount of unexploded ordinance (UXO). After the British victory in the Horn of Africa, the United Nations decided in 1952 to make Eritrea an autonomous entity federated with Ethiopia. Ethiopia subsequently annexed Eritrea in 1962, which sparked a struggle for independence that lasted 30 years since 1961 until 1991 and culminated in Eritrea's formal independence in 1993. The conflict resulted in considerable landmines and UXO contamination and the laying of numerous non-conventional hazardous ordnances in areas near military camps, roads, battle zones, strongholds of cities and populated areas, farmland and water resources.

In 1998 a border conflict characterized by trench warfare broke out between Eritrea and Ethiopia resulting in a two-year war and the laying of defensive minefields by both armies along above 1,000 Km border.

## 2. Nature and extent of the original Article 5 challenge: quantitative aspects

The problem with landmines and ERW is nationwide, with areas in the northern part of the country equally affected as those places that were battle grounds in the most recent war. From collated different field records it is totally estimated that over 1.5 million mines were buried in Eritrea during the 30 year war for independence and the two years border conflict war.

The first nationwide effort to identify the landmine and UXO contamination was through a Landmine Impact Survey (LIS) which began in March 2002 and concluded in June 2004. Prior to the LIS, incomplete gathered data records were kept by UNMEE MACC from different sources. Besides the Eritrean Defense Forces submitting records, several organizations contributed in conducting general surveys in specific areas mainly in the Temporary Security Zone (TSZ), an area of 25 kilometers wide within Eritrea, and about 1000 kilometers long along the border of Eritrea and Ethiopia, which identified 516 mined areas in the following Zobas of Eritrea: Anseba, Debub, Debubawi keih bahri, Gash Barka, Maekel and Semienawi keih bahri. However, since the 516 mined areas surveyed prior to the LIS overlapped with the country wide LIS findings, the Eritrean Demining Authority (EDA) employs these findings as their baseline.

The LIS was executed by the UNDP with technical support from SAC. It was implemented by the Eritrea Solidarity and Co-operation Association (ESCA) and resulted in the identification of 914 Suspected Hazard Areas (SHAs) measuring 129 km<sup>2</sup> in the following Zobas and sub-zobas:

- **Anseba:** 111 communities affected by landmines in 10 sub-zobas (Hamelmallo, Elabered, Habero, Halhal, Gheleb, Hagaz, Keren, Asmat, Adi Tekeliezan, Kerkebet) with a total of 211 SHAs
- **Debub:** 91 communities affected by landmines in 12 sub-zobas (Senafe, Tsorona, Dbarwa, Segheneity, Dekemhare, Adi Keyh, May Aini, Adi Quala, Maimine, Areza, Emni Haili, Mendefera) with a total of 145 SHAs
- **Debubawi Keih Bahri:** 18 communities affected by landmines in four sub-zobas (Araeta, Debub Debubawi Keih Bahri, Maekel Debubawi Keih Bahri and Asseb) with a total of 29 SHAs

- **Gash Barka:** 90 communities affected by landmines in 14 sub-zobas (Akurdet, Mogolo, Haykota, Shambuko, Lalay Gash, Mensura, Molqi, Tesseney Barentu, Logo Anseba, Omhajer, Gogne, Dige and Forto) with a total of 142 SHAs.
- **Maekel:** 39 communities impacted by landmines in 6 sub-zobas (Galanefhi, Serejeka, Berik, Semienawi Mierab, Semienawi Mibrak, Debubawi Mierab and Debubawi Mibrak) with a total of 89 SHAs.
- **Semienawi Keih Bahri:** 132 communities impacted by landmines in 10 sub-zobas ( Afabet, Karura, Foro, Nakfa, Ghinda, Massawa, Shieb, Ghelaelo, Adobha and Dahlak) with a total of 298 SHAs.

Of these 914 SHAs, 752 SHAs affecting 411 communities were identified as contaminated by AP mines, a mix of AP mines and AT mines or a mix of AP mines, AT mines, and UXO in Anseba (203), Debub (112), Debubawi Keih Bahri (12), Gash Barka (107), Maekela (72), and Semienawi Keih Bahri (245).

**Table 1**

	Ordnance Type	Number of Communities	Number of SHAs	% of contaminated surface
Mixed	AP & AT	87	104	37%
	AT, AP, UXO	20	17	4%
	AP & UXO	29	42	3%
	AT & UXO	2	4	0%
	Subtotal	138	167	44%
Unmixed	AP	275	589	47%
	AT	53	130	5%
	UXO	10	22	3%
	Subtotal	338	741	55%
Unknown		5	6	1%
<b>Total</b>		481	914	100%

It is also important to note that 170 areas could not be accessed due to access (140) and security (30) reasons (Some of these in Ethiopian side).

Although it was recognized that the LIS had several overlaps with the initial surveys and past clearance activities and that there were flaws with the data collected, it is the most comprehensive picture available of the anti-personnel mine contamination throughout Eritrea. The principal weakness

of the LIS was the lack of detail concerning the SHAs and therefore requiring a resurvey in order to better quantify the remaining challenge in Eritrea.

### 3. Nature and extent of the original Article 5 challenge: qualitative aspects

Landmines and ERW of every description are found in Eritrea. The most common are anti-tank and anti-personnel blast and fragmentation landmines. Also, UXO range from small arms ammunition to aerial-delivered bombs.

The population groups hardest hit by Landmines and UXO are rural inhabitants, nomadic people and internally displaced persons (IDPs) from the border conflict, herders and children. Beyond the killing and maiming of people, landmines and ERW had a noticeable effect on food security and the general development situation. The vast majority of the mine impacted communities in Eritrea depend on farming and herding for their livelihoods while most farmlands and pasture lands were blocked with laid mines and scattered ERW.

Key humanitarian challenges included making land safe for resettlement of returnees and expellees in Debub and Gash Barka Regions; freeing land for agricultural use to ensure food security; building social support systems for the most vulnerable population groups; creating linkages with recovery, reconstruction and development of the social and economic infrastructure. A number of projects, mainly infrastructure projects such as roads, schools, clinics, and dams began being carried out since the liberation of the country. The impediments of landmines and UXO to such constructions and other development projects were huge especially in the areas of Debub and Gash Barka regions until clearance was conducted.

The LIS conclusively identified and indicated that out of Eritrea's 4,176 communities, 481 are affected by landmines and UXO impacting 655,000 people. According to the LIS weighting, **33** of the impacted communities are of High impact, **100** communities of medium impact and **348** communities with low impact.

**Table 1**

Region	Total	Impact category			Impacted population
		High	Medium	Low	
Semienawi Keih Bahri	132	7	26	99	179,255
Anseba	111	4	21	86	107,446
Debub	91	11	25	55	91,661
Gash Barka	90	7	15	68	173,560
Maekel	39	2	10	27	93,271
Debubawi Keih Bahri	18	2	3	13	9,924

Total	481	33	100	348	655,117
-------	-----	----	-----	-----	---------

The LIS identified over 5,000 Land mines and UXO victims including 295 new victims (within the 24 months of the LIS interviews). This information is limited to the communities which reported being contaminated by landmines. Such information is detailed in the National Survey of people with disabilities prepared by the Ministry of Labor and Human Welfare. However, detailed information on casualties had not been kept until 2000.

According to the Eritrean Demining Authority database findings indicated in the table below, 739 new victims have been recorded since 2000.

#### **VICTIMS AGGREGATE FROM 2000-2010**

Year	Female		Male		Injured	Killed	TOTAL
	+18	-18	+18	-18			
2000	-	-	-	-	23	10	33
2001	-	-	-	-	153	42	195
2002	-	-	-	-	68	26	94
2003	-	-	-	-	43	26	69
2004	-	-	-	-	30	16	46
2005	-	-	-	-	47	16	63
2006	2	4	9	19	25	9	34
2007	16	8	28	18	53	17	70
2008	6	7	21	32	44	22	66
2009	0	6	9	23	30	8	38
2010	3	7	11	21	37	5	42
<b>TOTAL</b>	<b>27</b>	<b>32</b>	<b>78</b>	<b>113</b>	<b>553</b>	<b>197</b>	<b>750</b>

Due to the above mentioned consequences, the Eritrean Demining Authority proposed a national mine action strategic plan in two terms: short term and long term plans. But the drafted was the short term plan with the following four strategic objectives:

- To permit the total return of 64,000 internally Displaced Persons and Refugees from the camps by the end of 2006.
- To eliminate the impact of mine, Page 12 of 28s by clearing high and medium impacted areas based on the LIS data, by the end of 2009 and support small development and rehabilitation initiatives as necessary.
- To conduct, national, regional and local MRE activities to reduce new casualties assist clearance of UXO through the conduct of community-based MRE relations and dedicated marking teams.
- To establish a Victim Support system in place that will provide effective assistance to the large group existing victims and serve new requirements. In order to enable this strategic objective to be completed in the following five years, the Ministry of Labor and human Welfare is conducting the activity in cooperation with the Eritrean Demining Authority.

The long term plan, which is to clear the remaining mainly low impacted mined areas that need more study for assessing the necessary period and capacity will be addressed in the following five years.

#### **4. Methods used to identify areas containing AP mines and reasons for suspecting the presence of AP mines in other areas.**

The methods used to identify areas of mine and ERW impacts include information and data collection from a wealth of different sources and records which include the following:

- The Eritrean Army submitted 310 detailed records (an example of these records is annexed to the request) of the border areas in the Gash Barka, Debubawi Keih Bahri and Debub regions to the UNMACC in early 2001
- HALO Trust carried out surveys from 2001-2003 using SOPs based on International Mine Action Standards (IMAS)
- The Landmine impact survey carried out between March 2002- June 2004

As eluded in the first section of this document, there were great complications, duplications, and overstatement on part of organizations operating in Eritrea at the time and Eritrea still faces difficulty in sorting out the relevant data provided by UNMEE MACC before their departure. Therefore the LIS is seen as the better reference data given that it includes all of the communities of prior Level 1 surveys.

The LIS was executed by UNDP with two international and one national staff with technical support from SAC but employed by Eritrea Solidarity and Cooperation Association (ESCA). The LIS was carried out using Survey Working Group Protocols and had a total cost of US\$2,267,306.

The field staff was organized in such way which each interview team represented the language of the nine ethnic groups in Eritrea. The scoring system was driven by three elements: the number of victims, blocked access to resources and the type of munitions contaminating the community. Thus it was assumed to be responsive to the national concerns while remaining within the accepted international norm.

As noted earlier, the LIS was not able to access 170 communities and had a number of weaknesses. Concerning the 30 areas that are not accessible due to security reason, given prior mine clearance activities, Eritrea does not expect to identify any significant number of mined areas in these areas.

Additionally, at the moment these areas are under the jurisdiction but are not under the control of Eritrea.

## **5. National Demining Structure**

From the very beginning after liberation in 1991, the Eritrean government gave the greatest attention and focus for the clearance of landmines. The military field engineers were deployed to the whole impacted areas of the country and diligently conducted a massive task to clear or at least alleviate the impact of landmines and protect civilian people from suffering followed by its consequences.

In 1995 the initial humanitarian program started in Eritrea with the agreement made between government of the state of Eritrea and State Department of the USA with an indigenous implementing organization called Eritrean Humanitarian Demining Program (EHDP) and continued to build its staff capacity until the unfortunate border conflict war broke out in 1998. Consequently the landmine and other ERW contamination escalated to its worst with its effects inflicting great losses and harms on civilian life, socio economic and psychological aspects. After disrupting its programs due to the border conflict war, It was re-established again changing its name as) and started to function after the border conflict peace agreement since 2000.

After the border conflict war was officially concluded with the signing of the “agreement on the cessation of hostilities” by both parties on December 2000, the Eritrean Humanitarian Mine Action activities was initiated again under the national programmer organization called Eritrean Mine Action Program (EMAP) and there was an increase in Humanitarian Mine Action companies in Eritrea which was conducted by one National Mine Action called Eritrean Demining Agency and a number of external organizations such as DCA, Halo Trust, RONCO, DDC, MAT, UN MACC and the UN contingencies etc.

In August 2001, Eritrea became a party to the Convention on the Prohibition of the Use, Stockpiling, Production and Transfer of Anti-Personnel Mines and on Their Destruction and is actively engaged in fulfilling its obligations under the Convention.

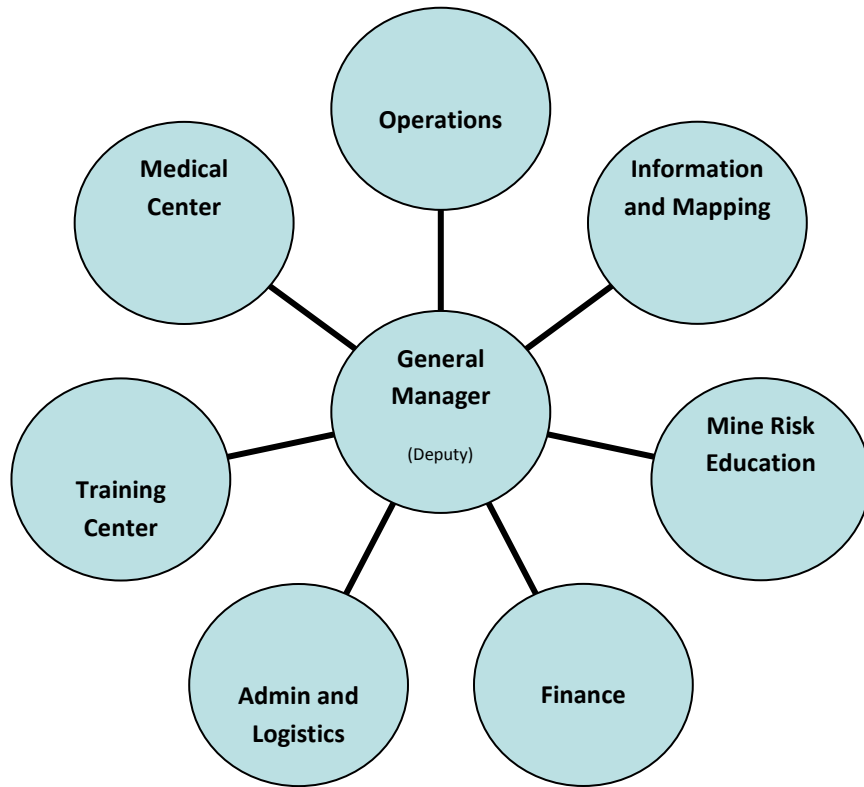
With the start of Humanitarian Mine Action Programs, it was necessary to establish a National Mine Action Authority to have the primary responsibility of coordinating and managing Mine action and develop policies, standards, procedures and guidelines for Mine Action programs in Eritrea. Therefore, the Eritrean government by proclamation 123/2002 established the Eritrean Demining Authority in 2002. The objectives of the authority include, but are not limited to the following:

- To find and destroy landmines and return mined areas to productive use;
- To educate Eritrean civilians on the danger so landmines and on ways to identify and report them;
- To clear mined areas to facilitate the repatriation of internally displaced persons and refugees;
- To integrate mine action into the national development plans

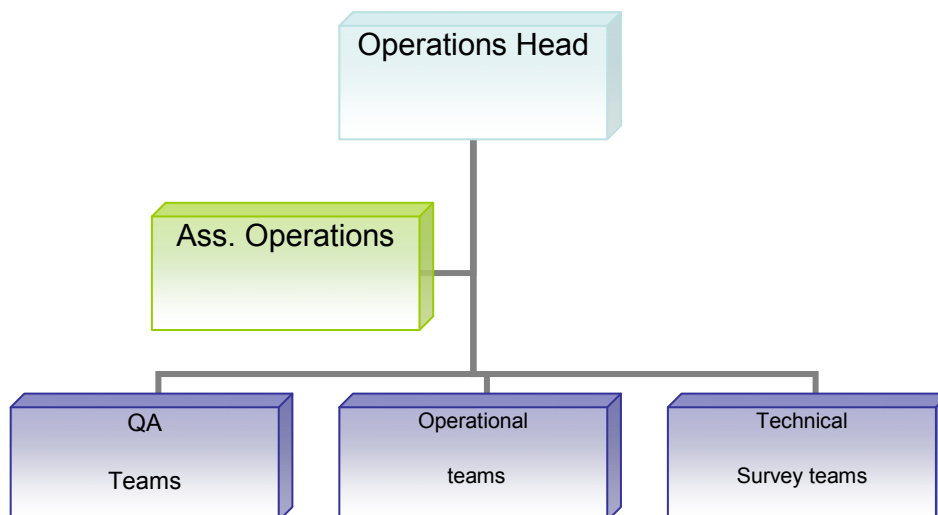
### National Authority Structure

The G/M of the Eritrean Demining Authority is appointed by the president of the state of Eritrea and reports directly to the president.

The organization consists of seven departments. These are the Operations, Information and Mapping, Mine Risk Education, Admin and Logistics, Training Center, Medical Center and Finance.

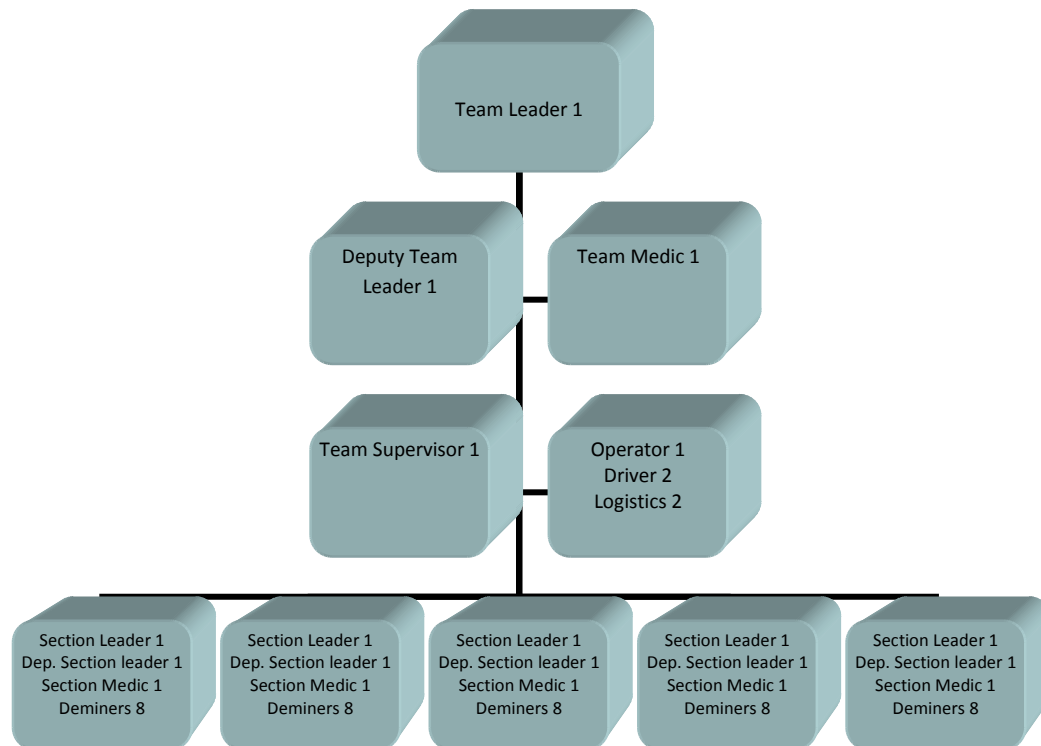


### Operations Structure



## Demining Team structure

While the capacity of Eritrea is greater the current funding situation solely allows for the funding for two operational teams deployed in the field and tasked by the EDA. The other supporting teams carry out a number of activities such as spot clearance, construction verification, road clearance, accident verification, and marking and fencing in support of the Mine Risk Education teams. The demining team structure is divided into 5 sections as follows:



## Background of demining activity by international entities

A number of international demining organizations participated in different aspects of mine action activities in Eritrea from 2001-2007. However, compared to the huge amount of funds that they had at their disposal the results they achieved in their production was minimal. Moreover, the activities of these organizations were not in compliance with the national development policy and strategy.

This led to the restructuring of Mine Action in the country. The restructuring was achieved with the establishment of the Eritrean Demining Authority. The consequences of the changes caused a chain of events that led to phasing out the contract of most international organizations and left the country. This was followed by the suspension of the Mine Action Capacity Building Program, which was executed by the UNDP, in October 2005. Despite this fact, the EDA, with the limited Mine Action Capacity Building Program Support of the UNDP, resumed the humanitarian demining in 2007. Tasks carried out at this moment were: mapping, marking of affected areas, Mine Risk Education mainly focused to



the former IDPs and Mine Clearance activities on a limited scale more focused in the IDPs/Expellees return/resettlement areas. Due to shortage of funds, however, the humanitarian challenges still remained in making land safe for agricultural use to support food security, building social support systems for the most vulnerable population groups, and creating linkages with recovery, reconstruction and development of social and economic infrastructure.

## 6. Nature and extent of progress made: quantitative aspects

The response of the Eritrean Government to the impact of landmines and UXOs was planned and strategic. Immediately after Eritrea's liberation in 1991 as well as right after the conclusion of the 1998-2000 border conflict with Ethiopia, army engineers carried out massive landmine/UXO clearance in the affected areas (estimated amount of clearance). Soon after the signing of the Cessation of Hostilities Agreement between Eritrea and Ethiopia in December 2000, preparations for humanitarian action went underway and became operational in 2001. Unfortunately, the management of data was not well coordinated between the different entities, was not as sophisticated and as disciplined as it should have been.

From the period of 2001 – 2010 a total of 79 locations have been cleared and total area cleared is **54,735,011** square meters, 30,832,678 square meters of which was cleared after the LIS, culminating in the destruction of **10296** anti-personnel mines, **998** anti-tank mines and **69401 UXO**. All of this progress has been made in communities identified by the LIS as being affected by mines.

### Total area clearance since 2001 until 2010

Organizations	Year	Cleared area (square meters)	Cleared Mines and UXO			Reduction method
			AT	AP	UXO	
UNMACC	2001-2006	5,427,708	AT	AP	UXO	Mechanical/Manual
RONCO	2001-2005	7,713,623				Combined
RONCO/EDA	2006	484,788				Manual, MDD
DCA/EDA	2001-2002	1,109,578				Manual
DDG	2001-2002	1,047,325				Manual
HALO Trust	2001-2003	11,068,448				Combined
EDO	2004-2005	607,945				Manual
MECHEM	2003-2007	51,620,562				Combined
EDA	2005-2009	21,563,379				Manual
EDA	2010	91,655				Manual
<b>TOTAL PROGRESSIVE</b>		<b>54,735,011</b>	<b>998</b>	<b>10296</b>	<b>69401</b>	

### Area clearance progress After LIS until 2010

Organization	Year	Cleared Area in Sq.meters
UNMACC	2005-2006	2,057,207
RONCO	2005	2,039,287
RONCO/EDA	2006	484,788
EDO/EDA	2005	157,124
MECHEM	2005-2007	4,439,238
EDA	2005-2010	21,655,034
<b>TOTAL PROGRESS</b>		<b>30,832,678</b>

The clearance progress figure indicated now in this document after LIS reports which is 30 sq km is much greater above the figure we have given in the previous reports. This is because we had by mistake skipped and did not include the UNMACC and RONCO activities.

#### SPOT CLEARANCE

Many of the areas cleared overlap with communities identified by the LIS and subsequently some of the LIS areas today are not affected by mines.

- **Anseba:** a total of 7 mined areas have been confirmed and cleared 2 communities (Elabared, Jfa) in 2 sub-zobas (Elabared, Keren) culminating in the clearance of **890,122** squared meters and the destruction of **562** AP mines, **88** AT mines and **3433** UXO.
- **Debab:** a total of 39 mined areas have been identified and cleared In 7 communities (Adi Ageb, Adi Yanguliare, Chemra Meque, Dbi, Tsha, Mal hadega, Meshal Akran) in 2 sub-zobas (Senafe, Tserona) culminating in the clearance of **4, 729,728** square meters and the destruction of **2880** AP mines, **220** AT mines and **17082** UXO.

- **Gash Barka:** a total of 14 mined areas have been identified and cleared In three communities ( Endagabre,May Kokah, Shilalo) in 1 sub-zoba (Lalay gash) culminating in the clearance of **41,739,400** square meters and the destruction of **5474** AP mines, **619** AT mines and **30708** UXO.
- **Semienawi Keih Bahri:** a total of 15 mined areas have been identified and cleared in 11 communities (Foro, Gulbub, Hirgigo, Malka, Massawa AdisAlem, Massawa Edaga, Massawa Emkulu, Massawa kambomarta, Robrobya, Unga, Wedega) of 3 sub zobas (Foro, Massawa, Afabet) culminating in the clearances of **7352106** square meters and the destruction of **1357** AP mines, **71** AT mines and **18045** UXO.
- **Maakel** a total of 72 mined areas have been identified and cleared in 3 communities (Kazien, medri Zawl, Geremi) in one Sub zoba Serejeka, culminating in the clearance of **23,655** square meters and the destruction of **23** AP mines and **133** UXO.

zoba	Cleared area	AP	AT	UXO
Anseba	890,122	562	88	3433
Debub	4,729,728	2880	220	17082
Gash Barka	41,739,400	5474	619	30708
SKB	7,352,106	1357	71	18045
Maekel	23655	23		133
<b>TOTAL</b>	<b>54,735,011</b>	<b>10296</b>	<b>998</b>	<b>69401</b>

## 7. Nature and extent of progress made: qualitative aspects

Despite the minimal external assistance offered to Eritrea, thanks to all the above mentioned cooperated teams, the first phase of the strategic plan (2005 – 2009) was accomplished with the reality of the following indicators:

- All internally displaced persons (approximately 64,000) have returned to their original places
- Landmines/UXO clearance of most of the highly impacted areas in the Gash Barka and Debub Regions has ensured the safe movement of the communities
- Sustained MRE has resulted in the reduction of mine and UXO victims

As a result of clearance operations the following qualitative progress should be highlighted:

- **Aseba:** of a total of 111 communities affected by mines with a population of 46,370 are no longer affected by mines.
- **Debub:** of a total of 91 communities affected by mines with a population of 70,000 are no longer affected by mines.
- **Debubawi Keih Bahri:** of a total of 18 communities affected by mines with a population of 7000 are no longer affected by mines.
- **Gash Barka:** of a total of 90 communities affected by mines with a population of 122,000 are no longer affected by mines.
- **Maekel:** of a total of 39 communities affected by mines with a population of 51,000 are no longer affected by mines.

- **Semienawi Keih Bahri:** of a total of 132 communities affected by mines with a population of 51, 489 are no longer affected by mines.

A lot of infrastructure projects such as roads, schools, clinics, dams etc started to be constructed in Eritrea since the liberation of the country after making verifications and conducting clearance of landmines. To mention some of those developments which were met after Eritrea ratified for the convention of the mine ban treaty are the following;

- Vast agricultural areas are converted into use in the Shilalo and Shilalo surrounding at Gash Barka Region.
- Kohaito tourism area in the Debub region and 4 drinking water dams in Dekemhare, Adi Keih, Debarwa and Mai Dima town, all constructed in the Debub region. Senafe and the surrounding, Tserona and the surrounding at South region.
- Detection, verification and spot clearances for country wide erection of electrical poles.
- Six bridge constructions undertaken along the Asmara Massawa road in Ghindae, Gahtelay Umkulu and in Massawa after absolute clearance and verification of the vicinity was certified.
- Others are; Massawa airport, Dahlak housing and other infrastructure construction projects in the Red sea region.
- Bisha Mining project, Gerset and Fanco dams in Gash Barka region etc.

## **8. Methods & standards used to release areas known or suspected to contain AP mines**

During the early years following the conflict between Eritrea and Ethiopia, a number of nongovernmental organizations and commercial companies were actively engaged in mine clearance in Eritrea ( Eritrean Demining Agency, Danish Church Aid, Danish Demining Group, HALO Trust, RONCO/EDA, RONCO, Mine Awareness Trust, UNMEE Contingencies) using a wealth of mine clearance tools including manual, mechanical and dog. These organizations utilized standards established by UN MACC based on International Mine Action Standards.

### **Manual Clearance**

Following the creation of the Eritrean Demining Authority and the departure of these organizations in 2007 as well as the subsequent drop of significant funding, Eritrea has been employing solely manual clearance. This is seen as the best method given that it is the cheapest and most effective option to carry out mine clearing operations with the limited resources and capacity that is locally available.

For carrying out manual mine clearance Eritrea has standards and standard operating procedures in place which take as their basis the International Mine Action Standards (IMAS), prepared with the aim to provide all personnel involved in landmine and UXO clearance in Eritrea with a reference for training, operations and deployment. The SOP has been developed according high international standard, best practices and in line with United Nations International Standards of mine action. The safety principles displayed in the SOP are valid for any person, visitor or otherwise who may visit any EDA task site.

It is EDA's wish that the SOP may contribute to a successful and professional mine clearing operation, and to the security of staff and the communities in Eritrea living under the threat of mines and UXO contamination.

## **9. Methods & standards of controlling and assuring quality**

During the initial years following the peace agreement and the establishment of UNMEE MACC all operators followed Technical Safety Standards and accreditation and licensing procedures established by UNMEE MACC in coordination with EMAP. The UNMEE MACC also carried out quality assurance and quality control of activities within the TSZ.

In the mine clearing program, the Eritrean Demining Authority through its Operations and QA/QC departments carries out the responsibility of all aspects of quality assurance and quality control standards according to the Eritrean Mine Action standard (SOP). All individuals deployed or involved in the humanitarian mine clearing task are trained and aware to be responsible for quality assurance. Quality checks are included at all levels of mine clearance tasks and are the foundation on which confidence in clearance is based.

The team leader has overall responsibility for monitoring operations and ensuring that all levels of quality checks are being correctly implemented. The Team leader:

- Checks 10% of completed daily work and report the result to the site supervisor.
- Checks and reviews the Section Daily work sheets, consolidate their contents and submit it to the site supervisor.

The site supervisor is responsible for all aspects of quality assurance for that site. The site supervisor:

- Ensures that all aspects of quality assurance at all levels are being carried out.
- Ensures that the method of demining being employed is suitable for that site.
- Monitors the result of clearance and adjusts the clearance method as appropriate.
- Conducts periodic spot QC conducted by section and team leaders.

Final checking, once the task is completed, is done by EDA external Q/A department by checking 20% of the cleared area.

Within each Mine Clearance Agency operating in Eritrea, the Team Leader or Supervisor has the overall responsibility for monitoring operation. To ensure that quality requirements are fulfilled and can provide confidence that quality requirements are met, the EDA External QA Department through QA Team Supervisor carries out the final checking, observing the work against each criterion described in both the monitoring checklists, which are the Generic Site Monitoring Checklist and the Manual Site Monitoring Checklist prepared by the Demining Authority.

The responsibility of QA in humanitarian demining is to confirm that management practices and operational procedures for demining are appropriate, and will achieve the requirement in a safe, effective and efficient manner.

After completion of mine clearance and EOD tasks, all appropriate records are to be completed checked and signed by the operations supervisor and then a clearance certificate is prepared by EDA and agreed to by local authorities for land release. Any non conformances identified during the task are to have been checked and verified before the final report is released to the local authorities. In the clearance report, map name, map reference, cleared area, name of clearing organization, quality assurance carried by who etc. are inclusively indicated.

## **10. Efforts undertaken to ensure the effective exclusion of civilians from mined areas**

In order to exclude civilians from mined areas and to prevent civilians from falling victims to landmines and UXO, the EDA with its partners have carried out a number of activities. Some of the general Mine Risk Education activities conducted are the following:

- EDA with its partners has developed tools to empower the youth and school children about Mine Risk Education and has been regularly providing annual statistics on Mine Risk Education in Eritrea including information on Casualties
- MRE is conducted for people in villages, hospitals, schools and using the occasions of national festivals and holydays. In addition MRE is broadcasted in all Eritrean ethnic languages in radio
- All affected people received Mine Risk Education from the MRE mobile teams and Community volunteers.
- As a continuation of our previous years MRE sensitizing workshop programs which were conducted for sub regional, village and surrounding administrators, we have also given such work shop for other staffs of governments and other relevant organizations such as police, press staffs, teachers, medical staffs, members from NUEW, NUEYS and volunteers from the community
- We conduct field tours with our local partners according to the annually planned program and with concerned guests coming from outside as well
- April 4, the day declared by the UN General Assembly as the 'International Day for Mine Awareness and Assistance in Mine Action' is annually celebrated in Eritrea starting the year 2006. This occasion have been used to make the public aware and sensitize it about the impact of landmines and UXOs

Progress to date includes the following:

- Over 1.2 million people received Mine Risk Education
- 780 elementary school teachers from all regions of the country received training to give MRE to their students.
- 35 people from ministry of information received training to broadcast MRE on radio, 39 members from Eritrean police, 35 from NUEW, 39 from NUEYS as groups in separate days took sensitizing workshops of MRE.
- 240 sub-regional, village, and surrounding administrators as well as members of line ministries in the six regions of the country were sensitized in MRE through workshops held in each region.
- 150 volunteers training of trainers

To avoid confusion and ensure effective exclusion of civilians from areas known or suspected to have AP mines, the following tasks are carried out and still under way being implemented;

- Marking and fencing conducted in most respective areas of the confirmed minefield.
- In mine clearing operations the mines and UXOs encountered in the minefields are destroyed immediately in situ or are moved to safe and suitable location for destruction at the end of the operational day.
- Nationwide Scattered UXO and other ERW are gathered and destroyed by EOD teams.

- Teams have been conducting battle area clearance and a daily checkup on suspected roads from newly laid mines, so as to ensure the safety of public transportation.

### 11. Resources made available to support progress made to date

During the years of operation under the UNMEE MACC a number of resources were provided. The EDA does not have exact figures before the establishment of the Eritrean Demining Authority in 2003 given that the funds were not administered by the Eritrean National Authority and did not either receive reports on the spending. Since this period the EDA has had an ongoing capacity building program with the UNDP. In addition to this the UNDP provides operational supports for two EDA demining teams. UNICEF provides support to EDA for Mine Risk Education activities covering the operational cost and field allowance of 10 MRE teams, each team consisting of 4 people.

Despite the very minimal external assistance, the Government of Eritrea is using its meager resources to tackle the impact of mines and UXOs and expedite the mine clearing programs. At the moment except the previously noted UN family assistance, the cost of all operational teams and sustainable logistical provisions are provided by the Government.

**National and International contributions since entry into force are as follows:**

Year	2001	2002	2003	2004	2005	2006	2007	2008	2009	2010	Total
Resource invested by the Government of Eritrea <sup>1</sup>	567,800	567,800	857,816	770,548	769554	256,758	512,250	259,654	256,569	256,567	5,075,316
Resources invested by external sources	870,000	870,000	201,065	564,028	402,143	313,062	550,860	271,154	354,535	414,715	4,811,562

### 12. Circumstances that impede compliance in a 10 year period

- Amount of contamination: As indicated in the first section, the contamination problem in Eritrea covers a large surface area and extends throughout the country. The number of conflicts has left a great number of landmines and UXO.
- Lack of funding: As indicated in the previous statements, the external assistance acquired since the start of the program and currently available is insignificant compared to the remaining task of mine action. We need a big budget to conduct technical survey and to expand our teams to promote mine clearing operations. Therefore unless significant external support is acquired, it will take much longer to complete the national mine clearing program than was planned initially.

- Equipment shortage: Eritrea has a great amount of personnel trained in humanitarian demining. However, the available equipment does not allow for deployment of our full capacity.
- Lack of efficient activities and coordination during the participation of several NGOs in the early stage of humanitarian demining operations

### **13. Humanitarian, economic, social and environmental implications**

The highest impact of landmines in Eritrea is on rural communities where landmines and unexploded ordnances are blocking access to pasture and agricultural land.

All communities that are impacted by landmines and Unexploded Ordnances (UXO) live in fear the prospect of death and injury, particularly amongst children, puts a huge psychological burden on people.

The LIS clearly shows that most accidents occur because people, in particular children, follow their animals that stray onto minefield which often offer rich vegetation for grazing. This pattern is supported by the fact that pastureland blockages are present in 399 of the 481 impacted communities.<sup>2</sup> From June to September 2002 the Ministry of Labour and Human Welfare<sup>3</sup> conducted a National Survey of People with Disabilities in Eritrea (NSPDE). The intention was to establish a database of people with disabilities. Such database was to be the basis of all future planning and development for all people with disabilities in Eritrea, including landmine survivors.

Preliminary analysis of the NSPDE data (2004) revealed that the impact of landmines and other debilitating injuries in Eritrea is in fact much more significant than the LIS would suggest. According to the NSPDE there are approximately 100,000 people with disability in the country.

Landmines are causing the death and or injury of the most productive member of society with consequent loss of productivity, disruption of family life and stresses on both health and social services

On the basis of the community visits for many landmine-impacted communities landmine contamination will be a cause of food insecurity. Therefore the landmine impact on food security should be seen from the community perspective.

### **14. Nature and extent of the remaining Article 5 challenge: quantitative aspects**

Based on the data recorded by different surveys, it is apparent that much remains to be done for Eritrea to fulfill its obligations under Article 5.

The number previously identified and recorded mined area includes the 516 identified through EDF registries and survey carried out by different NGOs as well as the 752 identified by the LIS. As

---



mentioned earlier the LIS data overlaps these areas and is being taken as the baseline for resurvey operations.

At the present time, the EDA does not have the necessary information to produce a detailed plan for completion of its Article 5 obligations but seeks to proceed to carry out additional surveys to precisely define the remaining challenge.

Of the **411** communities identified as impacted a total of **265** are pending resurvey.

- **Anseba:** A total of **88** communities are pending non-technical and, if relevant, technical survey.
- **Dehub:** **26** communities are pending non-technical and, if relevant, technical survey.
- **Dehubawi Keih Bahri:** **8** communities are pending non-technical and, if relevant, technical survey.
- **Gash Barka:** **29** communities are pending non-technical and, if relevant, technical survey.
- **Maekel:** **24** communities are pending non-technical and, if relevant, technical survey.
- **Semienawi Keih Bahri:** **90** communities are pending non-technical and, if relevant, technical survey.

#### **15. Nature and extent of the remaining Article 5 challenge: qualitative aspect**

Some of the challenges are;

The mined areas in Eritrea have complex nature the fact that most mined areas are with mineralized terrain which delays the progress of the task. Some areas are with thick thorny vegetations mainly in Dehub and Gash Barka regions. Some because mountainous difficult to conduct mine clearance. Some areas (lowland) having hot climate imposing discomfort in operations.

#### **16. Amount of time requested and rationale for this amount of time**

Eritrea requests a period of three (**3**) years (February 2012 – February 2015) in order to conduct non-technical and technical survey to identify the exact remaining challenges at the time of its submission for its second request by March 2014 and develop a concrete plan for fulfillment of Eritrea's Article 5 obligations. In addition Eritrea will continue to implement the Demining programs with the existing teams.

#### **17. Detailed work plan for the period of the requested extension**

##### **a. Activities**

Over the course of the extension period the EDA will carry out non-technical and technical survey of the remaining areas to cancel areas or confirm mined areas. In addition to the level two surveys that we are planning, simultaneously we will continue demining operations with the below listed teams.

##### Survey Methodology

The Non technical survey will be carried out through the national methodology in close coordination with the communities. The EDA survey teams visit and consult people in the affected communities, the military engineering people in the region who were present during the conflict, community volunteer MRE teams in the region and regional administration to determine if they have any information on the presence of mined areas. The EDA then makes a field visit to the suspected areas to

verify and determine whether these areas contain mines or not so that to make final decision for land release.

### Priorities

Priorities for survey and clearance will be set by the EDA in accordance with the remaining high and medium impacted areas followed by the low impacted areas. The LIS communities will be revisited to compile information on the current situation in the communities. This way the EDA will ensure that survey and clearance work will be carried out in the most impacted communities.

In addition to this, the EDA often receives clearance/verification support from the government Ministries, for example from the Ministries of Public Works, Agriculture, Energy and Mining, Land Water and Environment, Tourism, Local Administration and other Institutions having relevance to this mission or project so that to proceed in accordance with the development and infrastructure construction plans.

### Assumptions

We assume that 50% of the remaining LIS resulted areas will be reduced by the end of 2012. This assumption is based on the fact that the LIS areas are exaggerated and that a number of clearance activities have been carried out following the conflict in the same communities visited by the LIS. For example the cleared areas conducted by the military engineers prior to LIS since 1991 were not recorded and included as impacted areas in the LIS record but needing only non-technical survey to formal land release.

### **b. Human Resources**

The work over the next three years will show an increase in some of the teams as follows. The capacity of each team is as follows.

One demining team = 64 person.

One EOD team = 5 person

One Survey team = 5 person

One Q/A team = 5 person

One MRE team = 4 person

- Currently existing number of **two demining teams** will increase to **five teams**. So adding one team each year demining teams will expand to **teams** by the end of 2014.
- Currently existing number of **two EOD teams** will expand to **three teams** by July 2011 and continue their task.
- Currently existing number of **two survey teams** will expand to **three survey teams** by July 2011 and continue their task.
- Continue tasking with the current **two Q/A teams**.
- Continue MRE task with the currently existing **ten MRE teams** deployed all over the country.
- Continue with the current **150** community volunteers in 2011 and adding **50** people each year will reach **300** by 2014

In order to fulfill the goals of the extension request, the human resources indicated will need to receive refresher training and be deployed by mid July 2011.

Each demining team will be deployed to conduct demining operations according to the priority areas for clearance with assumed clearance rate of 800 square meters per team per day. This is computed to be a total of 960,000 sq meters in 2011 because it will be a half year progress. 2,304,000 sq meters in 2012. 2,688,000 sq.meters in 2013. 3,072,000 sq.meters in 2014 and again 3,072,000 sq.meters in 2015. This totals to **12, 096,000 sq.meters** by the end of 2015.

According to our current plan priority, the Demining teams are going to be deployed in the impacted regions of Anseba, sub regions **Halhal, Keren, Haboro, Geleb, Hagaz and Kerkebet** Northern Red Sea Region, sub region **Karora, Mahmimet, Afabet and Shieb.**

Non Technical survey which is currently our crucial task followed by technical survey activities will be conducted in the following locations:

**Anseba region** , sub regions

Hagaz, Keren, Halhal, Geleb, Elaberid, Hamelmalo, Asmat and Aditekelezan

**Semienawi Keih Bahri region**, sub regions:

Karora, Afabet, Shieb, Foro and Massawa

**Debubawi Keih Bahri region**, subregions:

Maakel Debubawi Keih Bahri, Debub Debubawi Keih Bahri, Assab and Araata.

**Maakel Region**, Sub regions

Serejeka, Gala Nefhi and Berik

**c. Financial Resources**

**5 year work plan Salary budget in USD.<sup>4</sup>**

year	2011	2012	2013	2014	2015	total
Deminers	319,500.00	766,800.00	894,600.00	1,022,400.00	1,022,400.00	4,025,700.00
EOD teams	14,400.00	28,800.00	28,800.00	28,800.00	28,800.00	129,600.00
Survey teams	14,400.00	28,800.00	28,800.00	28,800.00	28,800.00	129,600.00
Q/A teams	9,600.00	19,200.00	19,200.00	19,200.00	19,200.00	86,400.00
MRE teams	88,800.00	88,800.00	88,800.00	88,800.00	88,800.00	444,000.00

<b>Total</b>	446,700.00	932,400.00	1,060,200.00	1,188,000.00	1,188,000.00	<b>4,815,300.00</b>
--------------	------------	------------	--------------	--------------	--------------	---------------------

<sup>1</sup>This salary amount will be provided by the Government of Eritrea but there is a need of assistance for the operational DSA and Supply materials indicated below.

#### **5 year work plan DSA budget in USD**

<b>year</b>	<b>2011</b>	<b>2012</b>	<b>2013</b>	<b>2014</b>	<b>2015</b>	<b>total</b>
Deminers	172,800.00	414,720.00	483,840.00	552,960.00	552,960.00	2,177,280.00
EOD teams	8,100.00	16,200.00	16,200.00	16,200.00	16,200.00	72,900.00
Survey teams	8,100.00	16,200.00	16,200.00	16,200.00	16,200.00	72,900.00
Q/A teams	5,400.00	10,800.00	10,800.00	10,800.00	10,800.00	48,600.00
MRE teams	43,200.00	43,200.00	43,200.00	43,200.00	43,200.00	216,000.00
Commu. volunteers	12,000.00	16,020.00	20,001.00	24,000.00	24,000.00	96,021.00
<b>Total</b>	<b>249,600.00</b>	<b>517,140.00</b>	<b>590,241.00</b>	<b>663,360.00</b>	<b>663,360.00</b>	<b>2,683,701.00</b>

#### **5 year work plan Supply budget in USD**

Demining Equipments	=	646,000.00
Communication and Camp Equipment	=	62,000.00
Personal, Electrical and Marking equipment	=	173,000.00
Cooking tools and Sundries equipments	=	11,600.00
EOD and First Aid equipments	=	<u>46,200.00</u>
<b>Total</b>	=	<b>938,800.00 USD</b>

Therefore the over all total budget for the coming 5 years plan is about **8.5 million USD**

#### **D. Resource mobilization**

The Eritrean Government covers the salary of all field deployed mine action teams and will continue to cover it and will continue also to cover the operational equipment for the 5 mine clearance teams until the end program. But Eritrea needs assistance for the operational cost for all the teams which will be deployed in demining and the necessary supply for the teams which are proposed to be expanded beyond the 5 teams.

The budget for operations over the extension period and beyond is larger than the normal international contribution received for Eritrea. In order to mobilize these funds, the EDA aims to carry out the following activities.

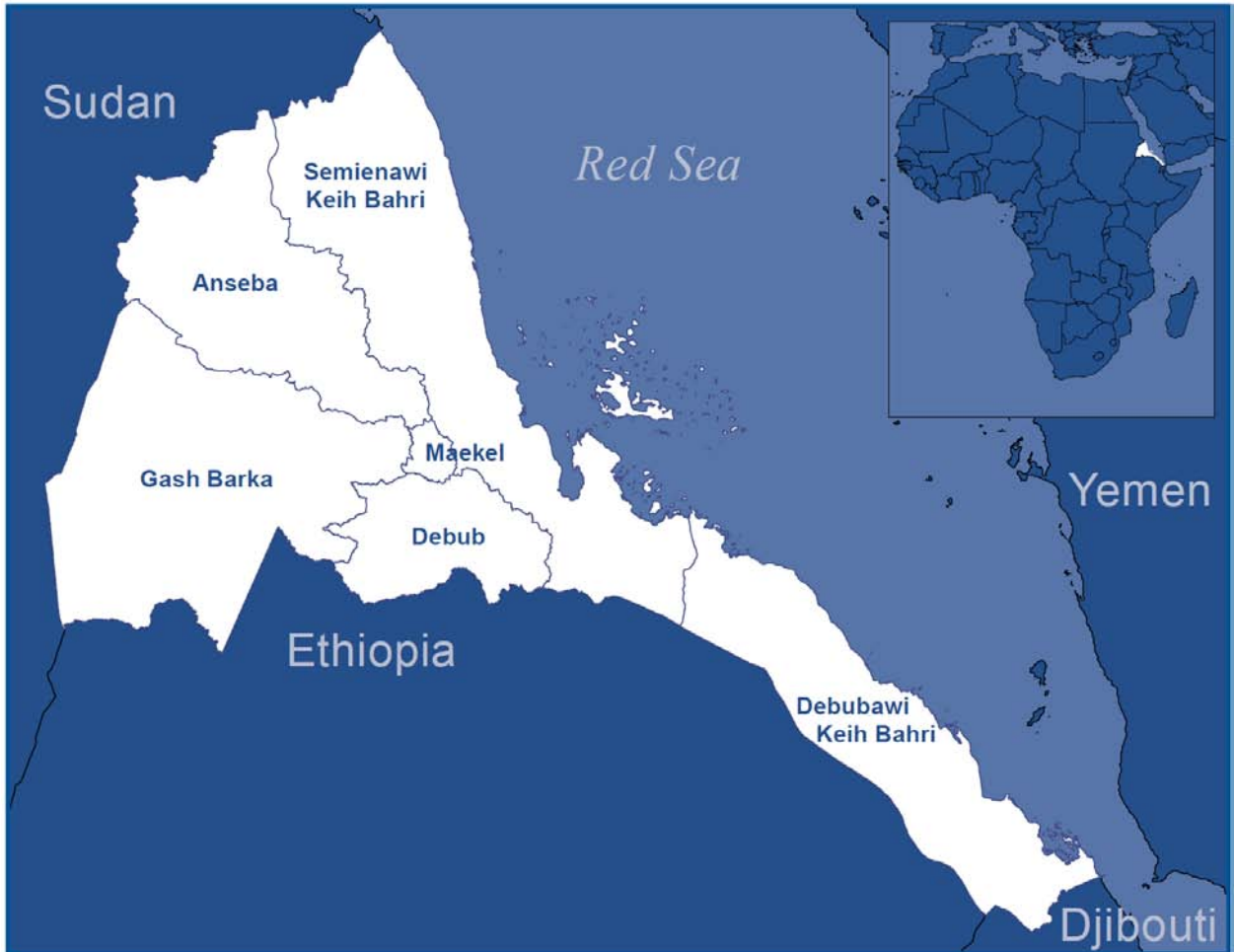
- Hold conversations with donors during Convention meetings and share the challenges and needs of Eritrea with the international community.
- Hold donor consultation meetings in convenient occasions to present the updated national strategy 2011-2015 and request donor support.
- Take advantage of activities that are normally undertaken on April 4<sup>th</sup> to commemorate the International Mine Action Day and invite donors to participate in activities.
- Work with the UNDP and UNICEF to investigate the opportunity so as to acquire more funds.

### **18. Institution , human resource and material capacity**

Currently, the available manpower capacity of the nation is as follows:

- 17 teams of 60 person each can be mobilized and deployed to conduct Landmine, UXO and explosive remnants of war (ERW) clearances, deployed after giving them the necessary refresher training if the necessary logistical and financial provision is acquired.
- 3 Survey, 3 EOD and 2 Quality Assurance operational sections,
- 10 standardized MRE teams and about 100 community volunteers monitored by EDA deployed in all regions of the country to raise the awareness of the public about the dangers of mines, UXOs and ERW.
- 57 community volunteers monitored by the Red Cross Society of Eritrea (RCSE).

**ANNEX I: MAP OF ERITREA<sup>1</sup>**



---

<sup>1</sup> Landmine Impact Survey

## Annex 2: 752 Mined Areas Containing AP or Combinations of AP, AT and or UXO Identified by the Landmine Impact Survey and results

Ser	Identification of the area under the jurisdiction or control of the State Party in which antipersonnel mines are emplaced or suspected to be emplaced			Geographic Coordinates		Size of Area under the jurisdiction or control of the State Party in which mines are emplaced or suspected to be emplaced (square meters)	Size of area that has been addressed (square meters)	Number of AP Mines Destroyed	Number of AT mines Destroyed	Number of UXO's Destroyed
	Zoba	Sub Zoba	Community	Longitude	Latitude					
1	Debubawi Keih Bahri	Araeta	Bhta	40.658976	14.559608					
2	Debubawi Keih Bahri	Araeta	Aladaben	40.693379	14.381768					
3	Debubawi Keih Bahri	Maekel Debubawi Keih Bahri	Edi	41.678250	13.934120					
4	Debubawi Keih Bahri	Maekel Debubawi Keih Bahri	Mabra	41.624559	14.023681					
5	Debubawi Keih Bahri	Maekel Debubawi Keih Bahri	Kurumo	41.610504	14.076713					
6	Debubawi Keih Bahri	Maekel Debubawi Keih Bahri	Kurumo	41.587760	14.093374					
7	Debubawi Keih Bahri	Debub Debubawi Keih Bahri	Debaysima	42.453291	12.740976					
8	Debubawi Keih Bahri	Debub Debubawi Keih Bahri	Debaysima	42.349004	12.699301					
9	Debubawi Keih Bahri	Debub Debubawi Keih Bahri	Musa Ali	42.282340	12.639492					
10	Debubawi Keih Bahri	Debub Debubawi Keih Bahri	Karien (Sebean Haden)	42.276418	12.643271					
11	Debubawi Keih Bahri	Debub Debubawi Keih Bahri	Lamsen	42.276180	12.643538					
12	Debubawi Keih Bahri	Asseb	Mekaekae	42.664057	13.065926					
13	Maekel	Serejeka	Kuazien	38.928796	15.496000		19,035	8		47
14	Maekel	Serejeka	Kuazien	38.930055	15.478436					
15	Maekel	Serejeka	Kuazien	38.931118	15.477548					
16	Maekel	Serejeka	Kuazien	38.929530	15.479856					
17	Maekel	Serejeka	Kuazien	38.942309	15.496335					

Ser	Identification of the area under the jurisdiction or control of the State Party in which antipersonnel mines are emplaced or suspected to be emplaced			Geographic Coordinates		Size of Area under the jurisdiction or control of the State Party in which mines are emplaced or suspected to be emplaced (square meters)	Size of area that has been addressed (square meters)	Number of AP Mines Destroyed	Number of AT mines Destroyed	Number of UXO's Destroyed
	Zoba	Sub Zoba	Community	Longitude	Latitude					
18	Maekel	Serejeka	Kuazien	38.924836	15.468829					
19	Maekel	Serejeka	Kuazien	38.928868	15.453201					
20	Maekel	Serejeka	Kuazien	38.916489	15.463144					
21	Maekel	Serejeka	Beleza	38.926412	15.448574					
22	Maekel	Serejeka	Mdri Zawi	38.865453	15.461202		2,120	7		33
23	Maekel	Serejeka	Weki	38.871439	15.559100					
24	Maekel	Serejeka	Adekolom	38.838373	15.506048					
25	Maekel	Serejeka	Adekolom	38.809611	15.510401					
26	Maekel	Serejeka	Shmangus Tahtay	38.789593	15.498870					
27	Maekel	Serejeka	Shmangus Tahtay	38.793524	15.486982					
28	Maekel	Serejeka	Shmangus Tahtay	38.798412	15.478400					
29	Maekel	Serejeka	Tsehaflam	38.855558	15.484322					
30	Maekel	Serejeka	Tsehaflam	38.853799	15.482371					
31	Maekel	Serejeka	Geremi	38.867365	15.463161		2,500	8		53
32	Maekel	Serejeka	Defere	38.911231	15.526366					
33	Maekel	Serejeka	Defere	38.920521	15.519990					
34	Maekel	Serejeka	Zagr	38.888662	15.564938					
35	Maekel	Serejeka	Zagr	38.902222	15.556602					
36	Maekel	Serejeka	Zagr	38.908447	15.547110					
37	Maekel	Serejeka	Azien	38.923921	15.516403					
38	Maekel	Berik	Adi Asfeda	38.856772	15.383556					
39	Maekel	Berik	Adi Asfeda	38.857900	15.384553					
40	Maekel	Berik	Adi Merawi	38.846891	15.383083					
41	Maekel	Berik	Adi Merawi	38.861387	15.371955					
42	Maekel	Berik	Adi Merawi	38.858232	15.374127					
43	Maekel	Berik	Adi Shmagle	38.868769	15.381275					
44	Maekel	Berik	Adi Shmagle	38.874989	15.378076					



Identification of the area under the jurisdiction or control of the State Party in which antipersonnel mines are emplaced or suspected to be emplaced				Geographic Coordinates		Size of Area under the jurisdiction or control of the State Party in which mines are emplaced or suspected to be emplaced (square meters)	Size of area that has been addressed (square meters)	Number of AP Mines Destroyed	Number of AT mines Destroyed	Number of UXO's Destroyed
Ser	Zoba	Sub Zoba	Community	Longitude	Latitude					
45	Maekel	Berik	Adi Shmagle	38.878004	15.376140					
46	Maekel	Berik	Adi Habteslus	38.877211	15.389584					
47	Maekel	Berik	Adi Habteslus	38.884978	15.361471					
48	Maekel	Berik	Tsezega	38.763509	15.349825					
49	Maekel	Berik	Tsezega	38.793817	15.358359					
50	Maekel	Berik	Adi Kontsi	38.851132	15.358068					
51	Maekel	Berik	Adi Kontsi	38.841620	15.349870					
52	Maekel	Berik	Adi Kontsi	38.825647	15.345272					
53	Maekel	Galane fhi	Merhano	38.937793	15.255018					
54	Maekel	Galane fhi	Merhano	38.927062	15.251223					
55	Maekel	Galane fhi	Adi Gembolo	38.865147	15.223220					
56	Maekel	Galane fhi	Adi Gembolo	38.852762	15.221360					
57	Maekel	Galane fhi	Himberti	38.718534	15.268100					
58	Maekel	Galane fhi	Ademzemat	38.902272	15.218508					
59	Maekel	Galane fhi	Ademzemat	38.886613	15.233577					
60	Maekel	Galane fhi	Adi Ke	38.911068	15.247312					
61	Maekel	Galane fhi	Adi Ke	38.895089	15.240144					
62	Maekel	Galane fhi	Adi Hawesha	38.980857	15.244972					
63	Maekel	Galane fhi	Adi Hawesha	38.982207	15.239614					
64	Maekel	Galane fhi	Gulie	38.992505	15.280406					
65	Maekel	Galane fhi	Tselot	38.988420	15.282182					
66	Maekel	Galane fhi	Tselot	38.991347	15.282862					
67	Maekel	Galane fhi	Tselot	39.000191	15.282930					
68	Maekel	Galane fhi	Arberegue	38.976114	15.337200					
69	Maekel	Galane fhi	Arberegue	38.984040	15.356682					
70	Maekel	Galane fhi	Arberegue	38.996608	15.363189					
71	Maekel	Galane fhi	Shegrni	38.998669	15.383227					

Ser	Identification of the area under the jurisdiction or control of the State Party in which antipersonnel mines are emplaced or suspected to be emplaced			Geographic Coordinates		Size of Area under the jurisdiction or control of the State Party in which mines are emplaced or suspected to be emplaced (square meters)	Size of area that has been addressed (square meters)	Number of AP Mines Destroyed	Number of AT mines Destroyed	Number of UXO's Destroyed
	Zoba	Sub Zoba	Community	Longitude	Latitude					
72	Maekel	Galaneffi	Shegrni	38.976039	15.336416					
73	Maekel	Galaneffi	Zigb	39.011840	15.248083					
74	Maekel	Galaneffi	Zigb	39.042118	15.220645					
75	Maekel	Galaneffi	Zigb	38.977845	15.218937					
76	Maekel	Galaneffi	Tredushi Tmamo	38.996500	15.284907					
77	Maekel	Galaneffi	Tredushi Tmamo	38.983242	15.291396					
78	Maekel	Galaneffi	Tredushi Tmamo	38.994233	15.273508					
79	Maekel	Galaneffi	Daero Paulos	38.872263	15.285908					
80	Maekel	Semienawi Mibrak	Asmara (Arbate Asmera)	38.984680	15.346631					
81	Maekel	Semienawi Mibrak	Asmara (Arbate Asmera)	38.988677	15.303430					
82	Maekel	Semienawi Mibrak	Asmara (Arbate Asmera)	39.001907	15.315503					
83	Maekel	Semienawi Mibrak	Asmara (Arbate Asmera)	38.995502	15.291603					
84	Maekel	Debubawi Mierab	Asmara (Kebabi Sembel)	38.898400	15.310019					
85	Semienawi Keih Bahri	Ghelaelo	Gelalo	40.087051	15.107585					
86	Semienawi Keih Bahri	Ghelaelo	Asa Eiela	39.966275	15.062510					
87	Semienawi Keih Bahri	Ghelaelo	Asa Eiela	39.993392	15.022416					
88	Semienawi Keih Bahri	Foro	Malka	39.562351	15.281369		30'000	80		
89	Semienawi Keih Bahri	Foro	Robrobya	39.487377	15.289222		46'784	214	3	6988
90	Semienawi Keih Bahri	Foro	Fatma Are	39.491644	15.288150					
91	Semienawi Keih Bahri	Foro	Fatma Are	39.523609	15.388471					
92	Semienawi Keih Bahri	Foro	Fatma Are	39.491819	15.326223					
93	Semienawi Keih Bahri	Foro	Adi Umoro	39.522199	15.264671					
94	Semienawi Keih Bahri	Foro	Adi Guuz	39.596975	15.266198					

Ser	Identification of the area under the jurisdiction or control of the State Party in which antipersonnel mines are emplaced or suspected to be emplaced			Geographic Coordinates		Size of Area under the jurisdiction or control of the State Party in which mines are emplaced or suspected to be emplaced (square meters)	Size of area that has been addressed (square meters)	Number of AP Mines Destroyed	Number of AT mines Destroyed	Number of UXO's Destroyed
	Zoba	Sub Zoba	Community	Longitude	Latitude					
	Bahri									
95	Semienawi Keih Bahri	Foro	Adi Guuz	39.600094	15.265647					
96	Semienawi Keih Bahri	Foro	Adi Guuz	39.594034	15.271457					
97	Semienawi Keih Bahri	Foro	Adade	39.491461	15.287426					
98	Semienawi Keih Bahri	Foro	Adade	39.518929	15.270878					
99	Semienawi Keih Bahri	Foro	Foro	39.626850	15.254699		44'278	94		291
100	Semienawi Keih Bahri	Foro	Foro	39.607135	15.286963		66'745	20		5
101	Semienawi Keih Bahri	Foro	Kadra(Qar)	39.629435	15.211518					
102	Semienawi Keih Bahri	Foro	Gumez	39.668609	15.211610					
103	Semienawi Keih Bahri	Foro	Segan Legade	39.640305	15.189157					
104	Semienawi Keih Bahri	Foro	Hzeit	39.626932	15.227244					
105	Semienawi Keih Bahri	Foro	Hzeit	39.630080	15.212566					
106	Semienawi Keih Bahri	Foro	Wedege	39.696403	15.218305		42'014	35	8	560
107	Semienawi Keih Bahri	Foro	Unga	39.626470	15.252714		58'715	296	12	3452
109	Semienawi Keih Bahri	Massawa	Massawa (Emberemi)	39.347940	15.708880					
110	Semienawi Keih Bahri	Massawa	Massawa (Adis Alem)	39.447665	15.620755		44'278	84	9	342
111	Semienawi Keih Bahri	Massawa	Massawa (Emkuli)	39.397392	15.581894		66'784	38	3	1124
112	Semienawi Keih Bahri	Massawa	Massawa (Emkuli)	39.374143	15.606008		52'067	71	1	1042
113	Semienawi Keih	Massawa	Dogali	39.339281	15.607444					

Ser	Identification of the area under the jurisdiction or control of the State Party in which antipersonnel mines are emplaced or suspected to be emplaced			Geographic Coordinates		Size of Area under the jurisdiction or control of the State Party in which mines are emplaced or suspected to be emplaced (square meters)	Size of area that has been addressed (square meters)	Number of AP Mines Destroyed	Number of AT mines Destroyed	Number of UXO's Destroyed
	Zoba	Sub Zoba	Community	Longitude	Latitude					
	Bahri									
114	Semienawi Keih Bahri	Massawa	Dogali	39.301602	15.608920					
115	Semienawi Keih Bahri	Massawa	Hirghigo	39.432618	15.504322		55'328	23	4	236
116	Semienawi Keih Bahri	Massawa	Hirghigo	39.455869	15.529729		45'768	57	2	967
117	Semienawi Keih Bahri	Massawa	Hirghigo	39.425142	15.571604		51'234	45	6	345
118	Semienawi Keih Bahri	Massawa	Massawa (Edaga)	39.450269	15.616684		56'783	34	6	2341
119	Semienawi Keih Bahri	Massawa	Massawa (Kapamarta)	39.449101	15.617220		84'532	56	4	231
120	Semienawi Keih Bahri	Massawa	Measheyt	39.381457	15.692769					
121	Semienawi Keih Bahri	Massawa	Measheyt	39.322680	15.687023					
122	Semienawi Keih Bahri	Massawa	Massawa (Grar)	39.460516	15.624049					
123	Semienawi Keih Bahri	Massawa	Massawa (Grar)	39.462200	15.627169					
124	Semienawi Keih Bahri	Massawa	Wedi Dbue	39.432157	15.667666					
125	Semienawi Keih Bahri	Ghinda	Ghinda'e	39.076270	15.445724					
126	Semienawi Keih Bahri	Ghinda	Embatkala	39.076175	15.388390					
127	Semienawi Keih Bahri	Ghinda	Embatkala	39.075922	15.384731					
128	Semienawi Keih Bahri	Ghinda	Nefasit	39.042567	15.337246					
129	Semienawi Keih Bahri	Ghinda	Sabur	38.935398	15.595692					
130	Semienawi Keih Bahri	Ghinda	Fagienna	38.914930	15.610468					
131	Semienawi Keih Bahri	Ghinda	Fagienna	38.913406	15.595261					

Ser	Identification of the area under the jurisdiction or control of the State Party in which antipersonnel mines are emplaced or suspected to be emplaced			Geographic Coordinates		Size of Area under the jurisdiction or control of the State Party in which mines are emplaced or suspected to be emplaced (square meters)	Size of area that has been addressed (square meters)	Number of AP Mines Destroyed	Number of AT mines Destroyed	Number of UXO's Destroyed
	Zoba	Sub Zoba	Community	Longitude	Latitude					
	Bahri									
132	Semienawi Keih Bahri	Ghinda	Mogue	38.912232	15.594850					
133	Semienawi Keih Bahri	Ghinda	Asus	39.127431	15.726789					
134	Semienawi Keih Bahri	Ghinda	May Atal	39.272155	15.596370					
135	Semienawi Keih Bahri	Ghinda	May Atal	39.258665	15.579792					
136	Semienawi Keih Bahri	Ghinda	May Atal	39.213856	15.554416					
137	Semienawi Keih Bahri	Ghinda	Metkel Dkuan	39.055202	15.451970					
138	Semienawi Keih Bahri	Ghinda	Gahtelay	39.151354	15.524842					
139	Semienawi Keih Bahri	Ghinda	Gahtelay	39.165990	15.521791					
140	Semienawi Keih Bahri	Ghinda	Gahtelay	39.160719	15.510894					
141	Semienawi Keih Bahri	Ghinda	Sahnen	39.331927	15.441865					
142	Semienawi Keih Bahri	Shieb	Gedged	39.038809	15.722388					
143	Semienawi Keih Bahri	Shieb	Tiluk	38.988900	15.940161					
144	Semienawi Keih Bahri	Shieb	Gisneb	39.036824	15.922993					
145	Semienawi Keih Bahri	Shieb	Fshey	38.918345	15.673844					
146	Semienawi Keih Bahri	Shieb	Fshey	38.897326	15.655006					
147	Semienawi Keih Bahri	Shieb	Fshey	38.902660	15.654816					
148	Semienawi Keih Bahri	Shieb	Fshey	38.888909	15.660695					
149	Semienawi Keih Bahri	Shieb	Fshey	38.885045	15.663486					

Ser	Identification of the area under the jurisdiction or control of the State Party in which antipersonnel mines are emplaced or suspected to be emplaced			Geographic Coordinates		Size of Area under the jurisdiction or control of the State Party in which mines are emplaced or suspected to be emplaced (square meters)	Size of area that has been addressed (square meters)	Number of AP Mines Destroyed	Number of AT mines Destroyed	Number of UXO's Destroyed
	Zoba	Sub Zoba	Community	Longitude	Latitude					
	Bahri									
150	Semienawi Keih Bahri	Shieb	Mrara	38.880661	15.666273					
151	Semienawi Keih Bahri	Shieb	Mrara	38.855551	15.720894					
152	Semienawi Keih Bahri	Shieb	Wedi - Eielo/Rashaida/	39.236402	15.754681					
153	Semienawi Keih Bahri	Shieb	Wedi - Eielo/Rashaida/	39.153419	15.747346					
154	Semienawi Keih Bahri	Shieb	Moter Ashalet	39.016914	15.723549					
155	Semienawi Keih Bahri	Afabet	Afabet	38.683168	16.200490					
156	Semienawi Keih Bahri	Afabet	Merar	38.722662	16.227671					
157	Semienawi Keih Bahri	Afabet	Merar	38.711338	16.213623					
158	Semienawi Keih Bahri	Afabet	Mahaya	38.693880	16.238451					
159	Semienawi Keih Bahri	Afabet	Mahaya	38.686767	16.220882					
160	Semienawi Keih Bahri	Afabet	Feleget	38.651337	16.502760					
161	Semienawi Keih Bahri	Afabet	Aydab Laelay	38.579266	16.285021					
162	Semienawi Keih Bahri	Afabet	Aydab Laelay	38.585118	16.288171					
163	Semienawi Keih Bahri	Afabet	Aydab Laelay	38.588489	16.285628					
164	Semienawi Keih Bahri	Afabet	Hambar	38.495319	16.116786					
165	Semienawi Keih Bahri	Afabet	Hambar	38.493721	16.114706					
166	Semienawi Keih Bahri	Afabet	Grgr Hamle	38.554404	16.346861					
167	Semienawi Keih Bahri	Afabet	Grgr Hamle	38.559969	16.316425					

Ser	Identification of the area under the jurisdiction or control of the State Party in which antipersonnel mines are emplaced or suspected to be emplaced			Geographic Coordinates		Size of Area under the jurisdiction or control of the State Party in which mines are emplaced or suspected to be emplaced (square meters)	Size of area that has been addressed (square meters)	Number of AP Mines Destroyed	Number of AT mines Destroyed	Number of UXO's Destroyed
	Zoba	Sub Zoba	Community	Longitude	Latitude					
	Bahri									
168	Semienawi Keih Bahri	Afabet	Grgr Hamle	38.553695	16.339015					
169	Semienawi Keih Bahri	Afabet	Grgr Qale	38.607606	16.341979					
170	Semienawi Keih Bahri	Afabet	Grgr Qale Aborha	38.669304	16.335277					
171	Semienawi Keih Bahri	Afabet	Grgr Qale Aborha	38.685746	16.382483					
172	Semienawi Keih Bahri	Afabet	Grgr Haml	38.661072	16.429946					
173	Semienawi Keih Bahri	Afabet	Adi Maybetot	38.518841	16.283843					
174	Semienawi Keih Bahri	Afabet	Gud	38.629531	16.495897					
175	Semienawi Keih Bahri	Afabet	Abhagie	38.721625	16.676335					
176	Semienawi Keih Bahri	Afabet	Abhagie	38.723249	16.675412					
177	Semienawi Keih Bahri	Afabet	Abhagie	38.738506	16.663085					
178	Semienawi Keih Bahri	Afabet	Abhagie	38.724941	16.675523					
179	Semienawi Keih Bahri	Afabet	Abhagie	38.718414	16.674950					
180	Semienawi Keih Bahri	Afabet	Abragwa	38.819487	16.595671					
181	Semienawi Keih Bahri	Afabet	Abragwa	38.816200	16.588970					
182	Semienawi Keih Bahri	Afabet	Aget	38.785272	16.738119					
183	Semienawi Keih Bahri	Afabet	Aget	38.659548	16.833000					
184	Semienawi Keih Bahri	Afabet	Aget	38.781731	16.819245					
185	Semienawi Keih Bahri	Afabet	Aget	38.769679	16.857661					

Ser	Identification of the area under the jurisdiction or control of the State Party in which antipersonnel mines are emplaced or suspected to be emplaced			Geographic Coordinates		Size of Area under the jurisdiction or control of the State Party in which mines are emplaced or suspected to be emplaced (square meters)	Size of area that has been addressed (square meters)	Number of AP Mines Destroyed	Number of AT mines Destroyed	Number of UXO's Destroyed
	Zoba	Sub Zoba	Community	Longitude	Latitude					
	Bahri									
186	Semienawi Keih Bahri	Afabet	Aget	38.812307	16.829198					
187	Semienawi Keih Bahri	Afabet	Aget	38.807497	16.909638					
188	Semienawi Keih Bahri	Afabet	Mhnaq	38.726414	16.883031					
189	Semienawi Keih Bahri	Afabet	Rahbat	38.700436	16.791068					
190	Semienawi Keih Bahri	Afabet	Rahbat	38.721309	16.782659					
191	Semienawi Keih Bahri	Afabet	Durbabu(Rashayda)	38.995764	16.879196					
192	Semienawi Keih Bahri	Afabet	Durbabu(Rashayda)							
193	Semienawi Keih Bahri	Afabet	Durbabu(Rashayda)	38.969795	16.896989					
194	Semienawi Keih Bahri	Afabet	Durbabu(Rashayda)							
195	Semienawi Keih Bahri	Afabet	Durbabu(Rashayda)	38.068903	16.776213					
196	Semienawi Keih Bahri	Afabet	Durbabu(Rashayda)	39.143173	16.574032					
197	Semienawi Keih Bahri	Afabet	Durbabu(Rashayda)	38.916143	16.813227					
198	Semienawi Keih Bahri	Afabet	Durbabu(Rashayda)	38.927648	16.865669					
199	Semienawi Keih Bahri	Afabet	Durbabu(Rashayda)	38.891309	16.840956					
200	Semienawi Keih Bahri	Afabet	Durbabu(Rashayda)	38.968586	16.897926					
201	Semienawi Keih Bahri	Afabet	Mhdaf	38.735659	16.150545					
202	Semienawi Keih Bahri	Afabet	Mhdaf	38.705186	16.133531					
203	Semienawi Keih Bahri	Afabet	Gurita	38.492456	16.353470					



Ser	Identification of the area under the jurisdiction or control of the State Party in which antipersonnel mines are emplaced or suspected to be emplaced			Geographic Coordinates		Size of Area under the jurisdiction or control of the State Party in which mines are emplaced or suspected to be emplaced (square meters)	Size of area that has been addressed (square meters)	Number of AP Mines Destroyed	Number of AT mines Destroyed	Number of UXO's Destroyed
	Zoba	Sub Zoba	Community	Longitude	Latitude					
	Bahri									
204	Semienawi Keih Bahri	Afabet	Gurita	38.491733	16.354799					
205	Semienawi Keih Bahri	Afabet	Metshat	38.620128	16.110769					
206	Semienawi Keih Bahri	Afabet	Metshat	38.566372	16.131246					
207	Semienawi Keih Bahri	Afabet	Felket	38.623781	16.111957					
208	Semienawi Keih Bahri	Afabet	Felket	38.644133	16.094369					
209	Semienawi Keih Bahri	Afabet	Felket	38.615671	16.081215					
210	Semienawi Keih Bahri	Afabet	Felket	38.607334	16.070687					
211	Semienawi Keih Bahri	Afabet	Aseqaq	38.649795	16.261608					
212	Semienawi Keih Bahri	Afabet	Arede	38.683885	16.659192					
213	Semienawi Keih Bahri	Afabet	Arede	38.651638	16.634724					
214	Semienawi Keih Bahri	Afabet	Arede	38.622356	16.635957					
215	Semienawi Keih Bahri	Afabet	Arede	38.612977	16.684411					
216	Semienawi Keih Bahri	Afabet	Arede	38.658442	16.641438					
217	Semienawi Keih Bahri	Afabet	Hambolay	38.543619	16.015321					
218	Semienawi Keih Bahri	Afabet	Hambolay	38.547668	16.014260					
219	Semienawi Keih Bahri	Afabet	Hambolay	38.535789	16.000142					
220	Semienawi Keih Bahri	Afabet	Hambolay	38.540602	16.010870					
221	Semienawi Keih Bahri	Afabet	Maybeitot	38.721081	16.234995					

Ser	Identification of the area under the jurisdiction or control of the State Party in which antipersonnel mines are emplaced or suspected to be emplaced			Geographic Coordinates		Size of Area under the jurisdiction or control of the State Party in which mines are emplaced or suspected to be emplaced (square meters)	Size of area that has been addressed (square meters)	Number of AP Mines Destroyed	Number of AT mines Destroyed	Number of UXO's Destroyed
	Zoba	Sub Zoba	Community	Longitude	Latitude					
	Bahri									
222	Semienawi Keih Bahri	Afabet	Maybeitot	38.740019	16.214028					
223	Semienawi Keih Bahri	Afabet	Maybeitot	38.761100	16.179760					
224	Semienawi Keih Bahri	Afabet	Maybeitot	38.761100	16.199641					
225	Semienawi Keih Bahri	Afabet	Dohna	38.541693	16.171821					
226	Semienawi Keih Bahri	Afabet	Dohna	38.481517	16.202152					
227	Semienawi Keih Bahri	Afabet	Shabayt	38.628950	16.256685					
228	Semienawi Keih Bahri	Afabet	Shabayt	38.629099	16.242605					
229	Semienawi Keih Bahri	Afabet	Shabayt	38.625913	16.239679					
230	Semienawi Keih Bahri	Afabet	Afa'bet	38.688232	16.181655					
231	Semienawi Keih Bahri	Afabet	Afa'bet	38.699189	16.140820					
232	Semienawi Keih Bahri	Afabet	Afa'bet	38.739128	16.169424					
233	Semienawi Keih Bahri	Afabet	Afa'bet	38.746363	16.210465					
234	Semienawi Keih Bahri	Afabet	Afa'bet	38.725495	16.210160					
235	++	Afabet	Gulbub	38.525320	16.143137		6'606'796	216	13	121
236	Semienawi Keih Bahri	Afabet	Ergale	38.605567	16.047240					
237	Semienawi Keih Bahri	Afabet	Tsighe	38.569776	16.215046					
238	Semienawi Keih Bahri	Afabet	Tsighe	38.537876	16.200259					
239	Semienawi Keih Bahri	Afabet	Tsighe	38.539015	16.223865					

Ser	Identification of the area under the jurisdiction or control of the State Party in which antipersonnel mines are emplaced or suspected to be emplaced			Geographic Coordinates		Size of Area under the jurisdiction or control of the State Party in which mines are emplaced or suspected to be emplaced (square meters)	Size of area that has been addressed (square meters)	Number of AP Mines Destroyed	Number of AT mines Destroyed	Number of UXO's Destroyed
	Zoba	Sub Zoba	Community	Longitude	Latitude					
240	Semienawi Keih Bahri	Afabet	Tsighe							
241	Semienawi Keih Bahri	Afabet	Tsighe	38.542475	16.225885					
242	Semienawi Keih Bahri	Afabet	Kobon	38.528461	16.262815					
243	Semienawi Keih Bahri	Afabet	Kobon	38.529105	16.257957					
244	Semienawi Keih Bahri	Afabet	Kobon	38.524363	16.265730					
245	Semienawi Keih Bahri	Afabet	Hday	38.601821	16.390413					
246	Semienawi Keih Bahri	Afabet	Shituk	38.486900	16.375343					
247	Semienawi Keih Bahri	Afabet	Birha	38.521111	16.173940					
248	Semienawi Keih Bahri	Afabet	Birha	38.509590	16.166769					
249	Semienawi Keih Bahri	Afabet	Birha	38.513320	16.182437					
250	Semienawi Keih Bahri	Afabet	Hbtyes	38.502608	16.333775					
251	Semienawi Keih Bahri	Afabet	Hbtyes	38.493376	16.335031					
252	Semienawi Keih Bahri	Nakfa	Dgdg	38.531524	16.645037					
253	Semienawi Keih Bahri	Nakfa	Taqbet	38.489457	16.596945					
254	Semienawi Keih Bahri	Nakfa	Ketenit	38.394301	16.544440					
255	Semienawi Keih Bahri	Nakfa	Labet	38.440682	16.427772					
256	Semienawi Keih Bahri	Nakfa	Hahot	38.436289	16.445470					
257	Semienawi Keih Bahri	Nakfa	Gurita	38.507156	16.624384					

Ser	Identification of the area under the jurisdiction or control of the State Party in which antipersonnel mines are emplaced or suspected to be emplaced			Geographic Coordinates		Size of Area under the jurisdiction or control of the State Party in which mines are emplaced or suspected to be emplaced (square meters)	Size of area that has been addressed (square meters)	Number of AP Mines Destroyed	Number of AT mines Destroyed	Number of UXO's Destroyed
	Zoba	Sub Zoba	Community	Longitude	Latitude					
258	Semienawi Keih Bahri	Nakfa	Ayg	38.494401	16.584950					
259	Semienawi Keih Bahri	Nakfa	Mshamei	38.490300	16.569428					
260	Semienawi Keih Bahri	Nakfa	Derqet	38.481945	16.549826					
261	Semienawi Keih Bahri	Nakfa	Eshlh	38.518008	16.647162					
262	Semienawi Keih Bahri	Nakfa	Eshlh	38.519743	16.644867					
263	Semienawi Keih Bahri	Nakfa	Enjaha	38.472970	16.549989					
264	Semienawi Keih Bahri	Nakfa	Enjaha	38.474797	16.546719					
265	Semienawi Keih Bahri	Nakfa	Enjaha	38.469698	16.541268					
266	Semienawi Keih Bahri	Nakfa	Enjaha	38.472088	16.542249					
267	Semienawi Keih Bahri	Karura	Gurit	38.499734	17.284979					
268	Semienawi Keih Bahri	Karura	Gurit	38.506005	17.278832					
269	Semienawi Keih Bahri	Karura	Gurit	38.499552	17.283398					
270	Semienawi Keih Bahri	Karura	Qetor	38.468620	17.403442					
271	Semienawi Keih Bahri	Karura	Qetor	38.427851	17.389986					
272	Semienawi Keih Bahri	Karura	Eila Tsaeda	38.406651	17.471279					
273	Semienawi Keih Bahri	Karura	Rhib	38.578738	17.428990					
274	Semienawi Keih Bahri	Karura	Rhib	38.600339	17.413398					
275	Semienawi Keih Bahri	Karura	Rhib	38.554170	17.402015					

Ser	Identification of the area under the jurisdiction or control of the State Party in which antipersonnel mines are emplaced or suspected to be emplaced			Geographic Coordinates		Size of Area under the jurisdiction or control of the State Party in which mines are emplaced or suspected to be emplaced (square meters)	Size of area that has been addressed (square meters)	Number of AP Mines Destroyed	Number of AT mines Destroyed	Number of UXO's Destroyed
	Zoba	Sub Zoba	Community	Longitude	Latitude					
276	Semienawi Keih Bahri	Karura	Habet	38.581061	17.271372					
277	Semienawi Keih Bahri	Karura	Habet	38.580994	17.271340					
278	Semienawi Keih Bahri	Karura	Habet	38.580786	17.271636					
279	Semienawi Keih Bahri	Karura	Geleb Sagla	38.686662	17.054723					
280	Semienawi Keih Bahri	Karura	Geleb Sagla	38.696289	17.036479					
281	Semienawi Keih Bahri	Karura	Dlk	38.742114	16.968823					
282	Semienawi Keih Bahri	Karura	Gumgum	38.752248	16.922973					
283	Semienawi Keih Bahri	Karura	Hdret	38.996836	17.136259					
284	Semienawi Keih Bahri	Karura	Tegeb	38.781049	16.841370					
285	Semienawi Keih Bahri	Karura	Tegeb	38.776230	16.840555					
286	Semienawi Keih Bahri	Karura	Trhmet	38.785030	16.925895					
287	Semienawi Keih Bahri	Karura	Mahmemit	38.559573	17.369108					
288	Semienawi Keih Bahri	Karura	Mahmemit	38.547667	17.376356					
289	Semienawi Keih Bahri	Karura	Mahmemit	38.551888	17.364874					
290	Semienawi Keih Bahri	Karura	Awgit	38.593878	17.408565					
291	Semienawi Keih Bahri	Karura	Marsa Teklay	38.851826	17.530293					
292	Semienawi Keih Bahri	Karura	Marsa Teklay	38.862318	17.518705					
293	Semienawi Keih Bahri	Karura	Marsa Teklay	38.834988	17.512175					

Identification of the area under the jurisdiction or control of the State Party in which antipersonnel mines are emplaced or suspected to be emplaced				Geographic Coordinates		Size of Area under the jurisdiction or control of the State Party in which mines are emplaced or suspected to be emplaced (square meters)	Size of area that has been addressed (square meters)	Number of AP Mines Destroyed	Number of AT mines Destroyed	Number of UXO's Destroyed
Ser	Zoba	Sub Zoba	Community	Longitude	Latitude					
294	Semienawi Keih Bahri	Karura	Dge Dobat	38.533186	17.354400					
295	Semienawi Keih Bahri	Karura	Dge Dobat	38.525511	17.346390					
296	Semienawi Keih Bahri	Karura	Dge Meba	38.523574	17.338059					
297	Semienawi Keih Bahri	Karura	Dge Meba	38.512181	17.319592					
298	Semienawi Keih Bahri	Karura	Enkelet Ejel	38.488677	17.295518					
299	Semienawi Keih Bahri	Karura	Enkelet Ejel	38.485886	17.311011					
300	Semienawi Keih Bahri	Karura	Enkelet Ejel	38.500085	17.327452					
301	Semienawi Keih Bahri	Karura	Belqat Amar	38.499656	17.357640					
302	Semienawi Keih Bahri	Karura	Karura	38.364565	17.672071					
303	Semienawi Keih Bahri	Karura	Naro	38.413522	17.579802					
304	Semienawi Keih Bahri	Karura	Naro	38.389597	17.573028					
305	Semienawi Keih Bahri	Karura	Naro	38.364227	17.574022					
306	Semienawi Keih Bahri	Karura	Naro	38.352971	17.580881					
307	Semienawi Keih Bahri	Karura	Naro	38.357011	17.586734					
308	Semienawi Keih Bahri	Karura	Ashhage	38.329036	17.629797					
309	Semienawi Keih Bahri	Karura	Ashhage	38.329570	17.651152					
310	Semienawi Keih Bahri	Karura	Gndeat	38.446839	17.628140					
311	Semienawi Keih Bahri	Karura	Felket	38.466389	17.302362					

Ser	Identification of the area under the jurisdiction or control of the State Party in which antipersonnel mines are emplaced or suspected to be emplaced			Geographic Coordinates		Size of Area under the jurisdiction or control of the State Party in which mines are emplaced or suspected to be emplaced (square meters)	Size of area that has been addressed (square meters)	Number of AP Mines Destroyed	Number of AT mines Destroyed	Number of UXO's Destroyed
	Zoba	Sub Zoba	Community	Longitude	Latitude					
312	Semienawi Keih Bahri	Karura	Felket	38.488402	17.290705					
313	Semienawi Keih Bahri	Karura	Felket	38.471473	17.284461					
314	Semienawi Keih Bahri	Karura	Felket	38.471732	17.278531					
315	Semienawi Keih Bahri	Karura	Felket	38.461617	17.286425					
316	Semienawi Keih Bahri	Karura	Sheglet	38.381879	17.420013					
317	Semienawi Keih Bahri	Karura	Sheglet	38.396528	17.440486					
318	Semienawi Keih Bahri	Karura	Athrah	38.473616	17.424978					
319	Semienawi Keih Bahri	Karura	Athrah	38.476661	17.398297					
320	Semienawi Keih Bahri	Karura	Athrah	38.470581	17.404958					
321	Semienawi Keih Bahri	Karura	Gawi	38.448335	17.489920					
322	Semienawi Keih Bahri	Karura	Gawi	38.418180	17.518630					
323	Semienawi Keih Bahri	Karura	Gawi	38.438911	17.497128					
324	Semienawi Keih Bahri	Karura	Tienre	38.671565	17.327882					
325	Semienawi Keih Bahri	Karura	Tienre	38.624227	17.309403					
326	Semienawi Keih Bahri	Karura	Tienre	38.604657	17.318164					
327	Semienawi Keih Bahri	Karura	Tienre	38.628311	17.287147					
328	Semienawi Keih Bahri	Karura	Wedi Gan	38.550692	17.240160					
329	Semienawi Keih Bahri	Karura	Wedi Gan	38.538339	17.239375					

Identification of the area under the jurisdiction or control of the State Party in which antipersonnel mines are emplaced or suspected to be emplaced				Geographic Coordinates		Size of Area under the jurisdiction or control of the State Party in which mines are emplaced or suspected to be emplaced (square meters)	Size of area that has been addressed (square meters)	Number of AP Mines Destroyed	Number of AT mines Destroyed	Number of UXO's Destroyed
Ser	Zoba	Sub Zoba	Community	Longitude	Latitude					
330	Anseba	Adi Tekeliezan	Shndwo	38.731435	15.623496					
331	Anseba	Adi Tekeliezan	Shndwo	38.754003	15.589812					
332	Anseba	Adi Tekeliezan	Sherdba	38.718439	15.640939					
333	Anseba	Adi Tekeliezan	Nalay	38.865799	15.655392					
334	Anseba	Adi Tekeliezan	Adi Tekeliezan	38.771216	15.569029					
335	Anseba	Hamelmalo	Qogay	38.521556	16.005629					
336	Anseba	Hamelmalo	Qogay	38.515043	16.004744					
337	Anseba	Hamelmalo	Akay	38.507191	15.999825					
338	Anseba	Hamelmalo	Akay	38.498881	16.003131					
339	Anseba	Hamelmalo	Akay	38.504657	16.003501					
340	Anseba	Hamelmalo	Debrom	38.489057	15.954294					
341	Anseba	Hamelmalo	Qerwet	38.482610	15.959853					
342	Anseba	Hamelmalo	Tsebab Asteru	38.535863	15.984833					
343	Anseba	Hamelmalo	Tsebab Asteru	38.530120	15.900288					
344	Anseba	Hamelmalo	Tofa Alebu	38.535291	16.001839					
345	Anseba	Hamelmalo	Tofa Alebu	38.542594	15.998032					
346	Anseba	Hamelmalo	Bsqdiro	38.563324	15.816278					
347	Anseba	Hamelmalo	Bsqdiro	38.561675	15.812858					
348	Anseba	Hamelmalo	Abu Aleba	38.358839	15.905207					
349	Anseba	Hamelmalo	Habin Dereba	38.385631	15.823823					
350	Anseba	Hamelmalo	Hatsats	38.503805	15.872941					
351	Anseba	Hamelmalo	Gamo	38.541850	15.922669					
352	Anseba	Hamelmalo	Shngurtela	38.378062	15.890092					
353	Anseba	Hamelmalo	Shngurtela	38.379830	15.906704					
354	Anseba	Hamelmalo	Gebeyleqem	38.335037	15.871579					
355	Anseba	Hamelmalo	Gebeyleqem	38.323376	15.875129					
356	Anseba	Hamelmalo	Aebdera	38.381007	15.897229					



Identification of the area under the jurisdiction or control of the State Party in which antipersonnel mines are emplaced or suspected to be emplaced				Geographic Coordinates		Size of Area under the jurisdiction or control of the State Party in which mines are emplaced or suspected to be emplaced (square meters)	Size of area that has been addressed (square meters)	Number of AP Mines Destroyed	Number of AT mines Destroyed	Number of UXO's Destroyed
Ser	Zoba	Sub Zoba	Community	Longitude	Latitude					
357	Anseba	Hamelmalo	Aebdera	38.394175	15.974487					
358	Anseba	Hamelmalo	Musha Ayg	38.508700	15.865767					
359	Anseba	Hamelmalo	Musha Shebah	38.520581	15.849453					
360	Anseba	Hamelmalo	Musha Shebah	38.521068	15.846205					
361	Anseba	Hamelmalo	Musha Shebah	38.503873	15.833756					
362	Anseba	Hamelmalo	Wazntet	38.540962	15.909955					
363	Anseba	Hamelmalo	Wazntet	38.563763	15.895647					
364	Anseba	Hamelmalo	Wazntet	38.511403	15.877481					
365	Anseba	Hamelmalo	Wazntet	38.504400	15.887403					
366	Anseba	Hamelmalo	Wazntet	38.496229	15.886259					
367	Anseba	Hamelmalo	Wazntet	38.478069	15.890469					
368	Anseba	Hamelmalo	Wazntet	38.477345	15.893930					
369	Anseba	Hamelmalo	Fredarb	38.524159	15.832349					
370	Anseba	Hamelmalo	Griesh	38.465185	15.931450					
371	Anseba	Hamelmalo	Griesh	38.468022	15.929064					
372	Anseba	Hamelmalo	Griesh	38.468448	15.923695					
373	Anseba	Hamelmalo	Griesh	38.467637	15.921946					
374	Anseba	Hamelmalo	Hangol	38.582323	15.824501					
375	Anseba	Hamelmalo	Hangol	38.573580	15.823494					
376	Anseba	Hamelmalo	Hangol	38.570646	15.826032					
377	Anseba	Hamelmalo	Hangol	38.569537	15.826880					
378	Anseba	Elabered	Eden	38.670293	15.706720					
379	Anseba	Elabered	Eden	38.644641	15.714251					
380	Anseba	Elabered	Adi Berbere	38.670231	15.699057					
381	Anseba	Elabered	Sher Hdray	38.679020	15.700758					
382	Anseba	Elabered	Terenkua	38.643488	15.715030					
383	Anseba	Elabered	Gush	38.620359	15.654261					

Identification of the area under the jurisdiction or control of the State Party in which antipersonnel mines are emplaced or suspected to be emplaced				Geographic Coordinates		Size of Area under the jurisdiction or control of the State Party in which mines are emplaced or suspected to be emplaced (square meters)	Size of area that has been addressed (square meters)	Number of AP Mines Destroyed	Number of AT mines Destroyed	Number of UXO's Destroyed
Ser	Zoba	Sub Zoba	Community	Longitude	Latitude					
384	Anseba	Elabered	Wasdemba	38.593084	15.671536					
385	Anseba	Elabered	Sheka	38.592150	15.669334					
386	Anseba	Elabered	Halibmentel	38.540952	15.739651					
387	Anseba	Elabered	Wesbensruq	38.509702	15.770636					
388	Anseba	Elabered	Wesbensruq	38.498575	15.779336					
389	Anseba	Elabered	Deroq	38.515909	15.761849					
390	Anseba	Elabered	Deroq	38.504178	15.774742					
391	Anseba	Elabered	Dgi	38.495553	15.740706					
392	Anseba	Elabered	Dgi	38.481499	15.741167					
393	Anseba	Elabered	Dgi	38.487015	15.755967					
394	Anseba	Elabered	Elabered	38.638208	15.687965		23'156	45	24	1346
395	Anseba	Elabered	Elabered	39.638208	16.687965		34'132	90	23	567
396	Anseba	Elabered	Elabered	40.638208	17.687965		96'543	104	21	345
397	Anseba	Elabered	Elabered	41.638208	18.687965		123'432	81	18	1124
398	Anseba	Elabered	Hager Dabur	38.483689	15.735098					
399	Anseba	Elabered	Hager Dabur	38.493181	15.727210					
400	Anseba	Elabered	Hager Dabur	38.478608	15.735186					
401	Anseba	Elabered	Hager Shkuak	38.494398	15.741291					
402	Anseba	Elabered	Adi Nedele	38.674026	15.706721					
403	Anseba	Gheleb	Adi Asmea(Tabolnjen)	38.736705	15.831840					
404	Anseba	Gheleb	Qabrfaud	38.661760	15.889861					
405	Anseba	Gheleb	Qabrfaud	38.668448	15.885281					
406	Anseba	Gheleb	Qabrfaud	38.656193	15.887801					
407	Anseba	Gheleb	Gergero	38.708230	15.770637					
408	Anseba	Gheleb	Qorera	38.764940	15.760308					
409	Anseba	Gheleb	Gerbet	38.746424	15.752520					
410	Anseba	Gheleb	Chemerat	38.749838	15.817689					

Identification of the area under the jurisdiction or control of the State Party in which antipersonnel mines are emplaced or suspected to be emplaced				Geographic Coordinates		Size of Area under the jurisdiction or control of the State Party in which mines are emplaced or suspected to be emplaced (square meters)	Size of area that has been addressed (square meters)	Number of AP Mines Destroyed	Number of AT mines Destroyed	Number of UXO's Destroyed
Ser	Zoba	Sub Zoba	Community	Longitude	Latitude					
411	Anseba	Gheleb	Qerot Shelshe	38.693580	15.856063					
412	Anseba	Gheleb	Asmata	38.686360	15.874378					
413	Anseba	Gheleb	Asmata	38.688630	15.864626					
414	Anseba	Gheleb	Asmeyet	38.710542	15.838821					
415	Anseba	Gheleb	Adi Bayray	38.624400	15.836099					
416	Anseba	Gheleb	Einkeray	38.625831	15.872428					
417	Anseba	Gheleb	Einkeray	38.623619	15.873044					
418	Anseba	Gheleb	Babaegam	38.634422	15.802708					
419	Anseba	Gheleb	Mord Haway	38.618503	15.842685					
420	Anseba	Keren	Shenara	38.390194	15.820145					
421	Anseba	Keren	Shenara	38.390074	15.819435					
422	Anseba	Keren	Bambi	38.494673	15.791968					
423	Anseba	Keren	Bambi	38.499656	15.787430					
424	Anseba	Keren	Bambi	38.502257	15.793043					
425	Anseba	Keren	Bambi	38.486835	15.807264					
426	Anseba	Keren	Bambi	38.482868	15.503650					
427	Anseba	Keren	Bambi	38.481893	15.795236					
428	Anseba	Keren	Gebisi	38.453829	15.807953					
429	Anseba	Keren	Gebisi	38.440761	15.852966					
430	Anseba	Keren	Megarh	38.418138	15.752751					
431	Anseba	Keren	Ahiferom	38.365425	15.818543					
432	Anseba	Keren	Jfa	38.473668	15.773783	284'788	85	1	12	
433	Anseba	Keren	Jfa	39.473668	16.773783	100'000	109	1	15	
434	Anseba	Keren	Jfa	40.473668	17.773783	228'071	48		24	
435	Anseba	Keren	Fafda	38.487674	15.819623					
436	Anseba	Keren	Fafda	38.490219	15.815583					
437	Anseba	Keren	Fafda	38.492070	15.812050					

Identification of the area under the jurisdiction or control of the State Party in which antipersonnel mines are emplaced or suspected to be emplaced				Geographic Coordinates		Size of Area under the jurisdiction or control of the State Party in which mines are emplaced or suspected to be emplaced (square meters)	Size of area that has been addressed (square meters)	Number of AP Mines Destroyed	Number of AT mines Destroyed	Number of UXO's Destroyed
Ser	Zoba	Sub Zoba	Community	Longitude	Latitude					
438	Anseba	Keren	Fafda	38.492830	15.807483					
439	Anseba	Keren	Hashela	38.504283	15.775663					
440	Anseba	Keren	Hashela	38.496194	15.778160					
441	Anseba	Hagaz	Hagaz	38.275410	15.708673					
442	Anseba	Hagaz	Bhaymanot	38.450079	15.737819					
443	Anseba	Hagaz	Cheweti	38.261035	15.621249					
444	Anseba	Hagaz	Cheweti	38.257741	15.623218					
445	Anseba	Hagaz	Adreka	38.261904	15.677209					
446	Anseba	Hagaz	Enkmetri	38.430315	15.744191					
447	Anseba	Hagaz	Enkmetri	38.436923	15.741138					
448	Anseba	Hagaz	Adi Omer Gabr	38.261904	15.677209					
449	Anseba	Hagaz	Frdgi	38.401739	15.742170					
450	Anseba	Hagaz	Adi Wedeg	38.248685	15.686080					
451	Anseba	Hagaz	Adi Wedeg	38.247493	15.688191					
452	Anseba	Hagaz	Adi Awute	38.265548	15.689872					
453	Anseba	Hagaz	Adi Awute	38.254595	15.683289					
454	Anseba	Hagaz	Bosa	38.469443	15.728256					
455	Anseba	Hagaz	Geab	38.452120	15.739574					
456	Anseba	Hagaz	Ashdira	38.392617	15.750328					
457	Anseba	Halhal	Debr	38.140272	16.036059					
458	Anseba	Halhal	Debr	38.131556	16.037800					
459	Anseba	Halhal	Debr	38.130052	16.030232					
460	Anseba	Halhal	Debr	38.123838	16.028071					
461	Anseba	Halhal	Mhr	38.183674	16.060529					
462	Anseba	Halhal	Mhr	38.182103	16.057587					
463	Anseba	Halhal	Mhr	38.175411	16.052561					
464	Anseba	Halhal	Mhr	38.168923	16.047912					

Identification of the area under the jurisdiction or control of the State Party in which antipersonnel mines are emplaced or suspected to be emplaced				Geographic Coordinates		Size of Area under the jurisdiction or control of the State Party in which mines are emplaced or suspected to be emplaced (square meters)	Size of area that has been addressed (square meters)	Number of AP Mines Destroyed	Number of AT mines Destroyed	Number of UXO's Destroyed
Ser	Zoba	Sub Zoba	Community	Longitude	Latitude					
465	Anseba	Halhal	Mhr	38.176101	16.065309					
466	Anseba	Halhal	Enrekebt	38.110531	16.110843					
467	Anseba	Halhal	Gerbet	38.254262	16.014769					
468	Anseba	Halhal	Gerbet	38.252202	16.005390					
469	Anseba	Halhal	Algaeta	38.274500	16.001656					
470	Anseba	Halhal	Algaeta	37.991257	16.269521					
471	Anseba	Halhal	Arese	38.354688	15.906340					
472	Anseba	Halhal	Arese	38.346739	15.910740					
473	Anseba	Halhal	Arese	38.346119	15.907452					
474	Anseba	Halhal	Arese	38.331374	15.917326					
475	Anseba	Halhal	Arese	38.309507	15.934604					
476	Anseba	Halhal	Adi Hzbay	38.246178	15.965875					
477	Anseba	Halhal	Tajeba	38.467849	15.945582					
478	Anseba	Halhal	Tajeba	38.461904	15.924313					
479	Anseba	Halhal	Tajeba	38.475055	15.928956					
480	Anseba	Halhal	Tajeba	38.473927	15.938165					
481	Anseba	Halhal	Rehey	38.243870	16.077208					
482	Anseba	Halhal	Rehey	38.240672	16.070930					
483	Anseba	Halhal	Rehey	38.220235	16.046858					
484	Anseba	Halhal	Qertset	38.207244	16.099639					
485	Anseba	Halhal	Qertset	38.209000	16.265646					
486	Anseba	Halhal	Ksret	38.088859	15.998887					
487	Anseba	Halhal	Iyago	38.201881	16.092867					
488	Anseba	Halhal	Iyago	38.198598	16.083830					
489	Anseba	Halhal	Simok	38.225920	15.943040					
490	Anseba	Halhal	Simok	38.224963	15.943919					
491	Anseba	Halhal	Simok	38.194270	15.937260					

Identification of the area under the jurisdiction or control of the State Party in which antipersonnel mines are emplaced or suspected to be emplaced				Geographic Coordinates		Size of Area under the jurisdiction or control of the State Party in which mines are emplaced or suspected to be emplaced (square meters)	Size of area that has been addressed (square meters)	Number of AP Mines Destroyed	Number of AT mines Destroyed	Number of UXO's Destroyed
Ser	Zoba	Sub Zoba	Community	Longitude	Latitude					
492	Anseba	Halhal	Gmbra	38.188732	16.943342					
493	Anseba	Halhal	Gmbra	38.193889	15.943075					
494	Anseba	Habero	Qebr Kentubay	38.432930	16.095687					
495	Anseba	Habero	Qatsetut	38.388830	16.098505					
496	Anseba	Habero	Qatsetut	38.419506	16.089881					
497	Anseba	Habero	Semut Tkem	38.360595	16.096333					
498	Anseba	Habero	Semut Tkem	38.347335	16.096905					
499	Anseba	Habero	Semut Tkem	38.346379	16.089574					
500	Anseba	Habero	Semut Tkem	38.342948	16.099722					
501	Anseba	Habero	Tnalebu	38.349029	16.091655					
502	Anseba	Habero	Tnalebu	38.345887	16.082338					
503	Anseba	Habero	Etandelet	38.452096	16.193778					
504	Anseba	Habero	Etnegat Laal	38.471030	16.021427					
505	Anseba	Habero	Cheweni	38.450151	16.305123					
506	Anseba	Habero	Cheweni	38.439450	16.303693					
507	Anseba	Habero	Tsrh	38.418658	16.045063					
508	Anseba	Habero	Shami	38.391162	16.292849					
509	Anseba	Habero	Shami	38.382483	16.289805					
510	Anseba	Habero	Srawa	38.408050	16.306719					
511	Anseba	Habero	Urogena	38.376452	16.260660					
512	Anseba	Habero	Wedebal	38.330502	16.084599					
513	Anseba	Habero	Wedebal	38.313443	16.084546					
514	Anseba	Habero	Geleba	38.293378	16.038972					
515	Anseba	Habero	Afayun	38.241193	16.261430					
516	Anseba	Habero	Enharsh	38.335199	16.231617					
517	Anseba	Habero	Dariqel	38.280882	16.070983					
518	Anseba	Asmat	Ira	38.065732	16.108251					

Identification of the area under the jurisdiction or control of the State Party in which antipersonnel mines are emplaced or suspected to be emplaced				Geographic Coordinates		Size of Area under the jurisdiction or control of the State Party in which mines are emplaced or suspected to be emplaced (square meters)	Size of area that has been addressed (square meters)	Number of AP Mines Destroyed	Number of AT mines Destroyed	Number of UXO's Destroyed
Ser	Zoba	Sub Zoba	Community	Longitude	Latitude					
519	Anseba	Asmat	Ira	38.042332	16.056536					
520	Anseba	Asmat	Ira	38.024604	16.011153					
521	Anseba	Asmat	Shgalit	38.160403	16.170978					
522	Anseba	Asmat	Shgalit	38.161864	16.157740					
523	Anseba	Asmat	Shgalit	38.149534	16.139298					
524	Anseba	Asmat	Shgalit	38.150669	16.145197					
525	Anseba	Asmat	Shgalit	38.137630	16.136895					
526	Anseba	Asmat	Hawtsie	38.123658	16.150182					
527	Anseba	Asmat	Akwar	38.170298	16.197263					
528	Anseba	Asmat	Akwar	38.168226	16.205379					
529	Anseba	Asmat	Mlmlta	38.102107	16.136856					
530	Anseba	Asmat	Mlmlta	38.102005	16.137070					
531	Anseba	Asmat	Hahot	38.180820	16.200566					
532	Anseba	Asmat	Hahot	38.236483	16.210688					
533	Anseba	Asmat	Hahot	38.185530	16.207241					
534	Gash Barka	Logo Anseba	Adi Hans Debri	38.721889	15.409214					
535	Gash Barka	Logo Anseba	Deki Shehay	38.700350	15.408474					
536	Gash Barka	Logo Anseba	Deki Shehay	38.699561	15.406245					
537	Gash Barka	Haykota	Adi Haj Blenge	37.055930	15.188314					
538	Gash Barka	Haykota	Adi Hatsir	37.077715	15.204070					
539	Gash Barka	Haykota	Adi Hatsir	37.070996	15.203190					
540	Gash Barka	Haykota	Adi seydna Tahr	37.091771	15.189695					
541	Gash Barka	Haykota	Adi Asfeda	37.059550	15.185116					
542	Gash Barka	Haykota	Alebu	36.874963	15.223601					
543	Gash Barka	Haykota	Adi Hamad	37.238680	15.125214					
544	Gash Barka	Haykota	Salsay-Dereja	37.089340	15.174258					
545	Gash Barka	Haykota	Gurash (Hinkokuley)	37.088880	15.196139					

Identification of the area under the jurisdiction or control of the State Party in which antipersonnel mines are emplaced or suspected to be emplaced				Geographic Coordinates		Size of Area under the jurisdiction or control of the State Party in which mines are emplaced or suspected to be emplaced (square meters)	Size of area that has been addressed (square meters)	Number of AP Mines Destroyed	Number of AT mines Destroyed	Number of UXO's Destroyed
Ser	Zoba	Sub Zoba	Community	Longitude	Latitude					
546	Gash Barka	Haykota	Libanyay	37.138710	15.125214					
547	Gash Barka	Haykota	Libanyay	37.265999	15.117634					
548	Gash Barka	Haykota	Habo	37.238766	15.124594					
549	Gash Barka	Lalay Gash	Shilalo	37.584508	14.646737		1'481'122	41	7	2825
550	Gash Barka	Lalay Gash	Shilalo	38.584508	15.646737		435'217	92	1	162
551	Gash Barka	Lalay Gash	Shilalo	39.584508	16.646737		1'959'383	91	8	1569
552	Gash Barka	Lalay Gash	Shilalo	40.584508	17.646737		624'779	470	4	420
553	Gash Barka	Lalay Gash	Shilalo	41.584508	18.646737		1'895'587	84	13	7335
554	Gash Barka	Lalay Gash	Shilalo	42.584508	19.646737		3'447'189	15	4	2019
555	Gash Barka	Lalay Gash	Enda Gabr	37.457823	14.527563		971'386	28	28	535
556	Gash Barka	Lalay Gash	Enda Gabr	37.436961	14.514803					
557	Gash Barka	Lalay Gash	Enda Gabr	37.452030	14.519950					
558	Gash Barka	Lalay Gash	May Kokah	37.507214	14.568971		7'590'636	1513	13	3046
559	Gash Barka	Lalay Gash	May Kokah	38.507214	15.568971		4'196'926	1248	34	3669
560	Gash Barka	Lalay Gash	May Kokah	39.507214	16.568971		6'800'000	817	252	4011
561	Gash Barka	Lalay Gash	May Kokah	40.507214	17.568971		5'077'919	356	124	1566
562	Gash Barka	Lalay Gash	May Kokah	41.507214	18.568971		2'960'966	464	74	450
563	Gash Barka	Lalay Gash	May Kokah	42.507214	19.568971		4'110'290	107	16	447
564	Gash Barka	Lalay Gash	May Kokah	43.507214	20.568971		120'000	70	8	620
565	Gash Barka	Omhajer	Omhajer	36.646945	14.348242					
566	Gash Barka	Omhajer	Omhajer	36.648143	14.348942					
567	Gash Barka	Omhajer	Shwen Dewab	36.743963	14.870941					
568	Gash Barka	Omhajer	Gerset	36.757140	14.881412					
569	Gash Barka	Tesseney	Tesseney (Meskerem)	36.634117	15.077912					
570	Gash Barka	Tesseney	Nibero Ashera	36.580480	15.152699					
571	Gash Barka	Tesseney	Nibero Ashera	36.574265	15.153623					
572	Gash Barka	Tesseney	Tesseney (Zoba Selam)	36.665332	15.080175					



Identification of the area under the jurisdiction or control of the State Party in which antipersonnel mines are emplaced or suspected to be emplaced				Geographic Coordinates		Size of Area under the jurisdiction or control of the State Party in which mines are emplaced or suspected to be emplaced (square meters)	Size of area that has been addressed (square meters)	Number of AP Mines Destroyed	Number of AT mines Destroyed	Number of UXO's Destroyed
Ser	Zoba	Sub Zoba	Community	Longitude	Latitude					
573	Gash Barka	Tesseney	Fanko	36.791825	15.008655					
574	Gash Barka	Tesseney	Harisateb	36.707881	15.219091					
575	Gash Barka	Tesseney	Harisateb	36.690663	15.227064					
576	Gash Barka	Molqi	Fewlina	38.010387	14.808852					
577	Gash Barka	Molqi	Sheka Wedikolela	37.972577	14.756327					
578	Gash Barka	Molqi	Sheka Wedikolela							
579	Gash Barka	Molqi	Dembe Kuakuat	38.036544	14.753813					
580	Gash Barka	Molqi	Aitabir	38.318797	14.872095					
581	Gash Barka	Molqi	Aitabir	38.302376	14.842488					
582	Gash Barka	Molqi	Aitabir	38.302040	14.853832					
583	Gash Barka	Molqi	Aitabir	38.294788	14.859093					
584	Gash Barka	Mensura	Aderde	38.144017	15.655557					
585	Gash Barka	Mensura	Aderde	38.131455	15.647634					
586	Gash Barka	Mensura	Aderde	38.118513	15.633902					
587	Gash Barka	Mensura	Adi Mehamed Drar	38.136309	15.650905					
588	Gash Barka	Mensura	Adi Mehamed Drar	38.127492	15.649649					
589	Gash Barka	Mensura	Adi Mehamed Drar	38.120890	15.646719					
590	Gash Barka	Mensura	Adi kukur	38.123660	15.629082					
591	Gash Barka	Mensura	Adi waki	38.159639	15.645191					
592	Gash Barka	Mensura	Adi Ashekeray	38.128618	15.632474					
593	Gash Barka	Mensura	Adi Yahya	38.145586	15.647946					
594	Gash Barka	Akurdet	Akurdet (Harnet)	37.889023	15.554132					
595	Gash Barka	Akurdet	Teblet	37.910426	15.572504					
596	Gash Barka	Akurdet	Teblet	37.908381	15.588392					
597	Gash Barka	Akurdet	Ad Habesh	37.908381	15.588392					
598	Gash Barka	Akurdet	Akurdet (Natsnet)	37.900950	15.538704					
599	Gash Barka	Akurdet	Engerne	38.018985	15.543936					

Identification of the area under the jurisdiction or control of the State Party in which antipersonnel mines are emplaced or suspected to be emplaced				Geographic Coordinates		Size of Area under the jurisdiction or control of the State Party in which mines are emplaced or suspected to be emplaced (square meters)	Size of area that has been addressed (square meters)	Number of AP Mines Destroyed	Number of AT mines Destroyed	Number of UXO's Destroyed
Ser	Zoba	Sub Zoba	Community	Longitude	Latitude					
600	Gash Barka	Akurdet	Engerne	38.025617	15.544520					
601	Gash Barka	Akurdet	Engerne	38.021359	15.551428					
602	Gash Barka	Akurdet	Atobrhan	37.931455	15.536056					
603	Gash Barka	Akurdet	Adi Dngiray	38.040460	15.611874					
604	Gash Barka	Akurdet	Adi Dngiray	38.031474	15.596190					
605	Gash Barka	Akurdet	Adi Haditay	38.063458	15.635440					
606	Gash Barka	Akurdet	Atebay Mkam	38.063276	15.634560					
607	Gash Barka	Akurdet	Adi Quslay	37.900110	15.547599					
608	Gash Barka	Akurdet	Adi Damerai	37.835596	15.617311					
609	Gash Barka	Akurdet	Tenbele	37.931631	15.537989					
610	Gash Barka	Akurdet	Adi M/ Drui	37.835607	15.617311					
611	Gash Barka	Akurdet	Hatlaliyu	37.924965	15.558029					
612	Gash Barka	Akurdet	Adi Saedien Gersey	38.021477	15.552411					
613	Gash Barka	Akurdet	Adi Saedien Gersey	38.018914	15.545669					
614	Gash Barka	Akurdet	Adi Maria	37.861589	15.528074					
615	Gash Barka	Akurdet	Adi Habab	37.865538	15.579425					
616	Gash Barka	Mogolo	Korkeda	37.593672	15.301900					
617	Gash Barka	Mogolo	Korkeda	37.589267	15.305919					
618	Gash Barka	Mogolo	Deret	37.848929	15.306157					
619	Gash Barka	Mogolo	Adi Merk	37.585864	15.306150					
620	Gash Barka	Shambuko	Adi Maelel	37.707386	14.771208		68'000	78	33	2'034
621	Gash Barka	Shambuko	Adi Maelel	37.701209	14.740127					
622	Gash Barka	Shambuko	Grme	37.738241	14.826934					
623	Gash Barka	Shambuko	Grme	37.734766	14.826184					
624	Gash Barka	Shambuko	Grme	37.734816	14.826104					
625	Gash Barka	Shambuko	Alala	37.772973	14.848760					
626	Gash Barka	Shambuko	Binbina	37.757425	14.960322					

Identification of the area under the jurisdiction or control of the State Party in which antipersonnel mines are emplaced or suspected to be emplaced				Geographic Coordinates		Size of Area under the jurisdiction or control of the State Party in which mines are emplaced or suspected to be emplaced (square meters)	Size of area that has been addressed (square meters)	Number of AP Mines Destroyed	Number of AT mines Destroyed	Number of UXO's Destroyed
Ser	Zoba	Sub Zoba	Community	Longitude	Latitude					
627	Gash Barka	Shambuko	Fode	37.585027	14.901415					
628	Gash Barka	Shambuko	Fode	37.575395	14.911547					
629	Gash Barka	Shambuko	Kuluku	37.626577	14.952814					
630	Gash Barka	Barentu	Barentu (Selam)	37.578849	15.128734					
631	Gash Barka	Barentu	Barentu (Biyara)	37.613595	15.151568					
632	Gash Barka	Barentu	Barentu (Biyara)	37.608441	15.141829					
633	Gash Barka	Barentu	Barentu (Biyara)	37.614526	15.117523					
634	Gash Barka	Barentu	Ugana	37.709801	15.151180					
635	Gash Barka	Barentu	Ashebawla	37.720953	15.163094					
636	Gash Barka	Barentu	Barentu (Fthi)	37.607876	15.104412					
637	Gash Barka	Gogne	Gogne	37.337388	15.116561					
638	Gash Barka	Gogne	Adi Qeshi	37.400712	15.097354					
639	Gash Barka	Gogne	Layde	37.399527	15.097830					
640	Gash Barka	Forto	Adebara	36.647172	15.302190					
641	Gash Barka	Forto	Adebara	36.642177	15.298728					
642	Debub	Dbarwa	Adi Nahbay	38.692556	15.087962					
643	Debub	Dbarwa	Shketi	38.858040	15.179644					
644	Debub	Emni Haili	Adi Bhaylay	38.680117	14.722458					
645	Debub	Emni Haili	Adi Bhaylay	38.676861	14.716385					
646	Debub	Emni Haili	Adi Bhaylay	38.674652	14.716391					
647	Debub	Emni Haili	Adi Bhaylay	38.674290	14.720200					
648	Debub	Maimine	Kuhli Zbi	38.645661	14.573811					
649	Debub	Maimine	Adi Burkut	38.645669	14.560234					
650	Debub	Maimine	Adi Burkut	38.673465	14.534841					
651	Debub	Maimine	Adi Abaqat - Adebrham	38.600220	14.468692					
652	Debub	May Aini	Qnafna	39.024210	14.788474					
653	Debub	May Aini	Qeyh Adi	38.975054	14.884680					

Identification of the area under the jurisdiction or control of the State Party in which antipersonnel mines are emplaced or suspected to be emplaced				Geographic Coordinates		Size of Area under the jurisdiction or control of the State Party in which mines are emplaced or suspected to be emplaced (square meters)	Size of area that has been addressed (square meters)	Number of AP Mines Destroyed	Number of AT mines Destroyed	Number of UXO's Destroyed
Ser	Zoba	Sub Zoba	Community	Longitude	Latitude					
654	Debub	May Aini	Qeyh Adi	38.968060	14.898151					
655	Debub	May Aini	Keyhkewhi	39.062977	14.674970					
656	Debub	May Aini	Una Watot	39.070439	14.626553					
657	Debub	May Aini	Eduf	39.013908	14.639984					
658	Debub	May Aini	Kermedeguzay	39.091854	14.658219					
659	Debub	Areza	Una Weldat	38.529381	14.901464					
660	Debub	Dekemhare	Arato	38.968354	15.055224					
661	Debub	Dekemhare	Harien	38.916123	15.031509					
662	Debub	Dekemhare	Gedele	38.916244	15.023768					
663	Debub	Dekemhare	Feqeyh	38.914296	15.024240					
664	Debub	Dekemhare	Kurbarya	38.967112	15.048995					
665	Debub	Dekemhare	Endadeqo	39.081638	15.031869					
666	Debub	Dekemhare	Endadeqo	39.095529	15.015740					
667	Debub	Dekemhare	Dekemhare (Hadamu)	39.038841	15.089234					
668	Debub	Segeneity	Ewanet	39.201883	15.005501					
669	Debub	Segeneity	Dgsa	39.238566	14.969386					
670	Debub	Segeneity	Dgsa	39.192599	14.987477					
671	Debub	Segeneity	Adi Hadid	39.233498	14.960657					
672	Debub	Segeneity	Adi Whi Laelay	39.202972	15.006317					
673	Debub	Segeneity	Adi Whi Laelay	39.197624	15.005119					
674	Debub	Segeneity	Brkito	39.257691	14.944014					
675	Debub	Segeneity	Adi Qrcha	39.239440	14.951945					
676	Debub	Segeneity	Degra Lbie	39.214449	15.014773					
677	Debub	Segeneity	Degra Lbie	39.206660	15.004739					
678	Debub	Segeneity	Segheniety	39.200407	15.027026					
679	Debub	Segeneity	Segheniety	39.180940	15.047013					
680	Debub	Segeneity	Segheniety	39.177319	15.051660					

Identification of the area under the jurisdiction or control of the State Party in which antipersonnel mines are emplaced or suspected to be emplaced				Geographic Coordinates		Size of Area under the jurisdiction or control of the State Party in which mines are emplaced or suspected to be emplaced (square meters)	Size of area that has been addressed (square meters)	Number of AP Mines Destroyed	Number of AT mines Destroyed	Number of UXO's Destroyed
Ser	Zoba	Sub Zoba	Community	Longitude	Latitude					
681	Debub	Segeneity	Segheniety	39.190153	15.068519					
682	Debub	Segeneity	Segheniety	39.172239	15.119404					
683	Debub	Adi Keyh	Tegeren	39.338262	14.830091					
684	Debub	Adi Keyh	Egla	39.439266	14.798993					
685	Debub	Adi Keyh	Hawatsu	39.365886	14.891870					
686	Debub	Adi Keyh	Hawatsu	39.352280	14.885364					
687	Debub	Adi Keyh	Hawatsu	39.353477	14.880152					
688	Debub	Adi Keyh	Abaselama	39.331161	14.886398					
689	Debub	Adi Keyh	Adi Wegera	39.336707	14.873348					
690	Debub	Adi Keyh	Adi Wegera	39.351361	14.888745					
691	Debub	Adi Keyh	Adi Wegera	39.352733	14.876878					
692	Debub	Adi Keyh	Adi Wegera	39.351434	14.869518					
693	Debub	Adi Keyh	Adi Wegera	39.350611	14.861666					
694	Debub	Adi Keyh	Adi Wegera	39.349348	14.862680					
695	Debub	Adi Keyh	Adi Wegera	39.334533	14.866901					
696	Debub	Adi Keyh	Adi Keih	39.381148	14.843929					
697	Debub	Adi Keyh	Tekondae	39.384398	14.819216					
698	Debub	Adi Keyh	Tekondae	39.356997	14.867982					
699	Debub	Senafe	Adi Enqrti	39.422302	14.622755					
700	Debub	Senafe	Embahsa	39.401916	14.616811					
701	Debub	Senafe	Mesahl Akran	39.320290	14.481896	153'000	78	NIL		797
702	Debub	Senafe	Adi Yanguliare	39.449158	14.734074	140'000	75	NIL		550
703	Debub	Senafe	Adi Ageb	39.435689	14.734419	135'000	25	NIL		450
704	Debub	Senafe	Mrara	39.409528	14.623730					
705	Debub	Senafe	Ksad Bruka (Forto)	39.381061	14.608544					
706	Debub	Senafe	Meshal (Wedi Kele)	39.379512	14.617636					
707	Debub	Senafe	Dbdb	39.400383	14.641208					

Identification of the area under the jurisdiction or control of the State Party in which antipersonnel mines are emplaced or suspected to be emplaced				Geographic Coordinates		Size of Area under the jurisdiction or control of the State Party in which mines are emplaced or suspected to be emplaced (square meters)	Size of area that has been addressed (square meters)	Number of AP Mines Destroyed	Number of AT mines Destroyed	Number of UXO's Destroyed
Ser	Zoba	Sub Zoba	Community	Longitude	Latitude					
708	Debub	Senafe	Dbdb	39.402518	14.641475					
709	Debub	Senafe	Mal Hadega	39.473467	14.733818		410'485	25	12	4253
710	Debub	Senafe	Tsha	39.446317	14.725648		42'879	180	11	566
711	Debub	Senafe	Tsha	40.446317	15.725648		46'840	120	10	2631
712	Debub	Senafe	Tsha	41.446317	16.725648		72'062	77	12	1
713	Debub	Senafe	Tsha	42.446317	17.725648		57'000	63	NIL	500
714	Debub	Senafe	Tsha	43.446317	18.725648		83'289	90	2	900
715	Debub	Senafe	Tsha	44.446317	19.725648		214'957	43	NIL	6
716	Debub	Senafe	Tsha	45.446317	20.725648		50'000	57	NIL	5
717	Debub	Senafe	Tsha	46.446317	21.725648		161'063	104	5	120
718	Debub	Senafe	Tsha	47.446317	22.725648		80'459	60	10	170
719	Debub	Senafe	Tsha	48.446317	23.725648		50'000	144	5	234
720	Debub	Senafe	Tsha	49.446317	24.725648		127'000	78	3	127
721	Debub	Senafe	Tsha	50.446317	25.725648		112'000	90	5	103
722	Debub	Senafe	Tsha	51.446317	26.725648		288'192	102	11	112
723	Debub	Senafe	Tsha	52.446317	27.725648		118'897	94	4	123
724	Debub	Senafe	Tsha	53.446317	28.725648		84'895	91	4	248
725	Debub	Senafe	Tsha	54.446317	29.725648		213'302	42	3	180
726	Debub	Senafe	Tsha	55.446317	30.725648		104'785	72	1	203
727	Debub	Senafe	Tsha	56.446317	31.725648		89'321	48	8	102
728	Debub	Senafe	Tsha	57.446317	32.725648		127.893	67	9	124
729	Debub	Senafe	Tsha	58.446317	33.725648		57'450	64	12	178
730	Debub	Senafe	Tsha	59.446317	34.725648		115'567	49	10	122
731	Debub	Senafe	Tsha	60.446317	35.725648		54'067	46	9	234
732	Debub	Senafe	Tsha	61.446317	36.725648		98.732	67	4	154
733	Debub	Senafe	Tsha	62.446317	37.725648		132'062	52	13	64

Identification of the area under the jurisdiction or control of the State Party in which antipersonnel mines are emplaced or suspected to be emplaced				Geographic Coordinates		Size of Area under the jurisdiction or control of the State Party in which mines are emplaced or suspected to be emplaced (square meters)	Size of area that has been addressed (square meters)	Number of AP Mines Destroyed	Number of AT mines Destroyed	Number of UXO's Destroyed
Ser	Zoba	Sub Zoba	Community	Longitude	Latitude					
734	Debub	Senafe	Tsha	63.446317	38.725648		105'451	89	NIL	105
735	Debub	Senafe	Tsha	64.446317	39.725648		35'324	32	1	632
736	Debub	Senafe	Tsha	65.446317	40.725648		142'672	96	11	67
737	Debub	Senafe	Tsha	66.446317	41.725648		89'456	53	8	532
738	Debub	Senafe	Tsha	67.446317	42.725648		287'741	97	4	234
739	Debub	Senafe	Tsha	68.446317	43.725648		70'789	82	2	167
740	Debub	Tsorona	Hashaso	39.242665	14.446940					
741	Debub	Tsorona	Chemra meque	39.117531	14.654778		229'378	32	3	236
742	Debub	Tsorona	Dbi	39.147814	14.638465		56'317	45	4	389
743	Debub	Tsorona	Dbi	40.147814	15.638465		170'252	78	8	1314
744	Debub	Tsorona	Dbi	41.147814	16.638465		126'456	73	10	34
745	Debub	Tsorona	Dbi	42.147814	17.638465		221'089	50	6	115
746	Debub	Tsorona	Brqanene	39.271413	14.654401					
747	Debub	Tsorona	Inkuray	39.041631	14.644728					
748	Debub	Adi Quala	Ksad Eiqa	38.782766	14.511940					
749	Debub	Adi Quala	Ksad Eiqa	38.776808	14.502705					
750	Debub	Adi Quala	Adi Ksad	38.693806	14.460741					
751	Debub	Adi Quala	Adi Ksad	38.697935	14.469347					
752	Debub	Adi Quala	Adi Ksad	38.680485	14.475533					
<b>TOTAL</b>							<b>54, 735, 011</b>	<b>10, 296</b>	<b>998</b>	<b>69,401</b>

### ANNEX 3 – SURVEY FINDINGS BY DIFFERENT ACTORS

MF ID	Identification of the area under the jurisdiction or control of the state party in which antipersonnel mines are emplaced or suspected to be emplaced				Geographic coordinate		Size of the area (square meters)	Surveyed by
	Zoba	Sub zoba	Community	Long.	Lat.			
1	837	Gash barka	Laelay gash	shilalo	373554.97	143849.51	33,292	unknown
2	833	D/K/B	D/D/K/B	Musa Ali	422044.29	123620.57	4,921,708	Halo trust
3	834	D/K/B	D/D/K/B	Musa Ali	422000.26	123731.36	2,484,012	MACC
4	835	Gash barka	Laelay gash	Habla	373559	144116	398,365	Ronco
5	836	Gash barka	Laelay gash	Grat maryam	373041.41	143426.9	1,114,473	unknown
6	832	Dehub	Maymne	Geza Sheka	373748.66	144433.21	56,906	MACC
7	814	Gash barka	Laelay gash	mukuti	373100.96	143020.93	2442821	Macc
8	815	Gash barka	Laelay gash	Inda gebir	372737.1	143105.33	1678026	Macc
9	816	Gash barka	Laelay gash	Adi hakin	373734.97	144153.01	79684	Macc
10	817	Gash barka	shambuko	weldensey	374415.52	144924.12	1119671	Macc
11	818	Gash barka	Laelay gash	Inda gabir	372727.01	143113.44	1200000	Macc
12	819	Gash barka	Laelay gash	Inda gabir	372816.11	143011.16	730484	Macc
13	820	Gash barka	Laelay gash	Tselim ressu	372920.78	142937.14	1047489	Macc
14	821	Gash barka	Laelay gash	mukuti	373137.87	142957.07	1157719	none
15	822	Gash barka	Laelay gash	mukuti	373033.8	142834.19	918278	MACC
16	823	Gash barka	Laelay gash	mukuti	373121.27	142746.61	850376	MACC
17	824	Gash barka	Laelay gash	Shilalo	37360504	144021	236706	MACC
18	825	Gash barka	Laelay gash	Kanshelay	373753.94	144458.43	106428	MACC
19	826	Gash barka	Laelay gash	Grat maryam	373307.64	143643.06	14196	EDA
20	827	Gash barka	Laelay gash	Grat maryam	373243.24	143631.89	7433	EDA
21	828	Dehub	Tsorona	Egri Mekel	390518.06	143906.68	77847	EDA
22	829	Dehub	Tsorona	Ferasit	390442.67	143907.17	64779	EDA
23	830	Gash barka	Laelay gash	Adi hakin	373750.87	144458.99	6343	EDA
24	831	Gash barka	Laelay gash	Adi hakin	373746.9	144443	5703	EDA
25	802	Gash barka	Laelay gash	Adi hakin	373804.61	144517.7	1024530	MACC
26	803	Gash barka	Laelay gash	Adi hakin	373742.26	144428.04	56917	MACC
27	804	Gash barka	Laelay gash	kanshelay	373842.08	144616.08	3835160	MACC
28	805	Gash barka	Laelay gash	sheshebit	373318.56	143209.16		MACC
29	806	Gash barka	Laelay gash	Dembe police	373754.15	143619.55	1016326	MACC
30	807	Gash barka	Laelay gash	kanshelay	373749.47	144450.07		MACC



MF ID	Identification of the area under the jurisdiction or control of the state party in which antipersonnel mines are emplaced or suspected to be emplaced				Geographic coordinate		Size of the area (square meters)	Surveyed by
	Zoba	Sub zoba	Community	Long.	Lat.			
31	808	Gash barka	Lalay gash	Habela	373555.22	143855.38	2330910	MACC
32	809	Gash barka	Lalay gash	Adi hakin	373712.12	144028.83		Macc
33	810	Gash barka	Lalay gash	Gratmariam	373345.82	143701.61	1033218	Macc
34	811	Gash barka	Lalay gash	Gratmariam	373219.66	143606.37	2674866	Macc
35	812	Gash barka	Lalay gash	May kokah	372927.54	143347.99	298526	Macc
36	813	Gash barka	Lalay gash	May kokah	372858.99	143326.81	884065	Macc
37	729	Daebub	Senafe	Tsha	392654.6	144315.6	1011914	Macc
38	730	Daebub	Senafe	Tsha	392751.12	144328.2	2772368	Macc
39	731	Daebub	Senafe	Tsha	393015.12	144411.76	677533	Mac
40	732	Daebub	Senafe	Tsha	393234.44	144240.32	2775888	Macc
41	733	Daebub	Senafe	Tsha	392559.88	144245.72	256200	Macc
42	734	Daebub	Senafe	Tsha	392635.16	144252.36	152753	Macc
43	735	Daebub	Senafe	Adi ageb	392514.14	144301.2	53295	Macc
44	736	Daebub	Senafe	Adi ageb	392518.84	144308.4	12677	Macc
45	737	Gash barka	Lalay gash	habela	349086	1621969	4973	Halo trust
46	739	Debub	Senafe	Ased	393237.22	144241.62	1453622	Halo trust
47	740	Debub	May aini	Enikowalaka	390113.44	143812.48	552,868	Macc
48	741	Debub	May aini	Enikowalaka	390038.16	143712		
49	744	Gash barka	shambuqo	Tselim kelay	374353.4	144830/60	640491	Macc
50	746	D/K/B	D/D/K/B	Debaysima	422714.7	124428.32	5301236	Macc
51	747	D/K/B	D/D/K/B	Debaysima	422916.44	124213.32	5441576	Macc
52	748	Gash barka	Lalay gash	Shilalo	373454.14	143731.17	11856631	Macc
53	750	Gash barka	Lalay gash	Sheshebit	373713.08	143417.76		Macc
54	751	Debub	Dekemhare	Harien	385442	150215	117977	Mhalo trust
55	752	Gash barka	Lalay gash	Adi hakin	373843,56	144149.56	2711766	Macc
56	753	Gash barka	shambuqo	shambuqo	374529	150036		Macc
57	755	Maekel	D/mbrak	Asmara	385331	151823		Halo trust
58	756	Gash barka	Omhajer	Omhajer	364058.95	142119.98	1686062	Macc
59	757	D/K/B	D/D/K/B	Musa ali	421633.33	123747.26	110258	Macc
60	758	Gash barka	Lalay gash	Adi hakin	373738	144416	50903	Macc
61	760	S/K/B	Foro	Wadege	394001.19	151305.39	2740234	Macc
62	761	Gash barka	Lalay gash	Habela	373553.04	143934.14	167385	EDO
63	762	Debub	Tserona	Qunito	391536.31	142527.49	2133168	Macc

MF ID	Identification of the area under the jurisdiction or control of the state party in which antipersonnel mines are emplaced or suspected to be emplaced				Geographic coordinate		Size of the area (square meters)	Surveyed by
	Zoba	Sub zoba	Community	Long.	Lat.			
64	763	Dehub	Tserona	Qunito	391536.67	142527.88	2664134	Macc
65	764	Dehub	Tserona	Tserona	391138.05	143414.06		Macc
66	765	Gash barka	Sambko	Dedadima	374931.2	144118.91	1134159	Macc
67	778	Dehub	Tserona	Qunito	391453.8	142552.22		Macc
68	779	Gash barka	Laelay gash	Adi hakin	373751	144145	102032	Enginners
69	780	Gash barka	shambuqo	Adi hakin	373751	144145		Mechem
70	781	Gash barka	Laelay gash	Habela	373537.31	144012.69	233728	Ronco
71	782	Gash barka	Laelay gash	Habela	373530.9	144015	341959	Ranco
72	783	Gash barka	Laelay gash	Shilalo	373412	143900	151797	Dca
73	784	Dehub	Senafe	Tsha	392515	144330	13212	Dca
74	785	Dehub	Adi keyh	Karibosa	392520.82	144314.84	29446	Dca
75	786	Gash barka	Laelay gash	Shilalo	373456.2	143725.22	196502	Eda
76	787	Gash barka	Laelay gash	Shilalo	373456.2	143725.22	118059	Eda
77	788	Gash barka	Laelay gash	Shilalo	373456.2	143725.22	70688	Eda
78	789	Gash barka	Laelay gash	May kokah	372834.81	143222.18	10539	Halo trust
79	790	Gash barka	Laelay gash	May kokah	373025.32	143410.04	12456	Halo trust
80	791	Dehub	Tserona	Mhrad chele	390846.7	143942.7	33371	Halo trust
81	792	Dehub	Tserona	Mhrad chele	390907.57	143950.67	64149	Halo trust
82	793	Dehub	Tserona	Mhrad chele	390907.57	143950.67	46350	Halo trust
83	794	Dehub	Tserona	Mhrad chele	390907.57	143950.67	23872	Halo trust
84	795	Semienawi keih bahri	Massawa	Massawa(adis alem)	392259.91	154045.85	92615	Halo trust
85	796	Dehub	Tserona	Mhrad chele	390938	144011	48702	Halo trust
86	798	Seminawi keih bahri	Massawa	Massawa(adis alem)	392555	153844	400	Halo trust
87	799	Dehub	Senafe	senafe	392523.4	144240.21	6943	Halo trust
88	718	Dehub	Senafe	Tsha	392638	144324		Mre
89	719	Dehub	Senafe	senafe	392513	144303		Halo trust
90	721	Dehub	Senafe	senafe	392612	144301		Halo trust
91	722	Dehub	Adi quala	Geza keren	384609	143051	70688	Halo trust
92	723	Dehub	Senafe	Metera	541585,00	1622728		Halo trust
93	724	Dehub	Senafe	Senafe	392645	144330		Halo trust
94	725	Dehub	Mendefera	Egri mekel	390645.72	143749.72	1728157	Macc

MF ID	Identification of the area under the jurisdiction or control of the state party in which antipersonnel mines are emplaced or suspected to be emplaced				Geographic coordinate		Size of the area (square meters)	Surveyed by
	Zoba	Sub zoba	Community	Long.	Lat.			
95	726	Debub	Tserona	Wisho	391232.4	143910.08	4322493	Macc
96	727	Debub	Senafe	Neteba	391755.68	143937.44	1538182	Macc
97	728	Debub	Senafe	Denagul	391908.4	144032.52		Macc
98	700	Debub	Senafe	Senafe	392431.68	144110.32	285959106	Macc
99	701	Debub	Senafe	Senafe	392519.56	144242.12	485989	Macc
100	702	Debub	Senafe	Senafe	392551.6	144245.72	1069605	Macc
101	712	Gash barka	Lalay gash	Shilalo	373248	143623		Halo trust
102	713	Anseba	Elabered	Elabered	383621	154151		Halo trust
103	714	Debub	Senafe	Kolet	55746400	16078910		EDF
104	716	Gash barka	Omhajer	Akilalat	384249.62	144823.58		UNHCR
105	717	Debub	Adikeih	Adikeih	392103	145202	165667	Macc
106	670	Gash barka	Lalay gash	May kokah	338,089.0	1610889	3070	Halo trust
107	671	Gash barka	Gogne	Gogne	352543	1653959	318595	Halo trust
108	672	Gash barka	Gogne	Gogne	347870	1648660		Halo trust
109	673	Gash barka	Gogne	Gogne	347210	1649365	379410	Halo trust
110	674	Gash barka	barentu	Barentu(selam	361498	1675179	128955369	Halo trust
111	675	Gash barka	Omhajer	Gerset	258839	1646874	20035	Halo trust
112	676	Gash barka	Gogne	Gogne	321855	1671581	42295	Halo trust
113	677	Gash barka	Barentu	Barentu(selam	345054	1670333		Halo trust
114	678	Debubawi keih bahri	Debubawi keih bahri	debaysima	218598	1,411,717.00	25866	Halo trust
115	680	Gash barka	Lalay gash	Shilalo	347269	1620012	126458	Halo trust
116	689	Debub	May aini	Einkowalaka	390117.04	143803.48	848397	Macc
117	690	Debub	May aini	Einkowalaka	390236.6	143825.08	937779	Macc
118	691	Debub	Tsorona	Ferasit	390337.08	143836.24	1099090	Macc
119	692	Debub	Mendefera	Egri mekel	390444.04	143849.2	915815	Macc
120	693	Debub	Mendefera	Egri mekel	390540.56	143847.76	849047	Macc
121	694	Debub	Mendefera	Egri mekel	390639.96	143752.32	573967	Macc
122	696	Debub	Mendefera	Egri mekel	390657.6	143757.36	2509231	Macc
123	697	Debub	Tsorona	Tsorona	390936.36	143815	2027552	Macc
124	698	Debub	Tsorona	Tsorona	391127.6	143831.2	1284234	Macc
125	669	Debub	Tsorona	Tsorona	521615	1619110		Halo trust
126	668	Debub	Tsorona	Tsorona	516963	1621686		Halo trust

MF ID	Identification of the area under the jurisdiction or control of the state party in which antipersonnel mines are emplaced or suspected to be emplaced			Geographic coordinate		Size of the area (square meters)	Surveyed by	
	Zoba	Sub zoba	Community	Long.	Lat.			
127	667	Gash barka	Mogolo	Adi hakin	352275	1625165		Halo trust
128	666	Gash barka	Barentu	Barentu(selam	350879	1673319		Halo trust
129	665	Gash barka	Tesseney	Adi key	327640	1668838	32987	Halo trust
130	664	Gash barka	tesseney	Tesseney(meskere m)	253531	1682930	10299	Halo trust
131	663	Gash barka	Haykota	Asfeda arede	253654	1683893		Halo trust
132	662	Gash barka	Akurdet	Adi kasha lalay	327640	1668838	29188	Halo trust
133	661	Gash barka	Barentu	Barentu(selam	347131	1672766	79328	Halo trust
134	659	Gash barka	Gogne	Dura	350879	1673319	19509780	Halo trust
135	658	Gash barka	Barentu	Barent selam	350880	1670317	428283	Halo trust
136	657	Gash barka	Barentu	Barent selam	346908	1671465	84144	Halo trust
137	655	Maekel	Galanefih	Shegrni	385857.47	152305.22		Mace
138	653	Gash barka	Mogolo	Adi hakin	352109	1624046		Halo trust
139	651	Debub	Tsorona	Tsorona	521326	1617890		Halo trust
140	649	Semienawi keih bahri	Afabet	kamchwa	462676	1821335		Halo trust
141	647	Anseba	Hamelmallo	Gebeyleqem	430003	1759250		Halo trust
142	646	Debub	Senafe	Mal hadega	550789	1628529		Halo trust
143	645	Debub	Senafe	Mal hadega	550866	1628715		Halo trust
144	644	Debub	Senafe	Adi sarikoma	549144	1628369		Halo trust
145	643	Debub	Tsorona	Ferasit	507651	1619858		Halo trust
146	641	Debubawi keih bahri	Maekel d/k/bahri	edi	789997	1542465	95977	Halo trust
147	640	S/ke/ba	Foro	Adi bileino	552433	1690102		Halo trust
148	639	S/k/b	Massawa	Massawa(grav)	536355	1725552		Halo trust
149	638	S/k/b	Ghelaelo	Asa eiela	604024	1666253		Halo trust
150	637	D/k/b	D/debubaw	Musa ali	204120	1399378		Halo trust
151	636	D/k/b	D/debubaw	debaysima	223057	1409703		Halo trust
152	635	Gash barka	Tesseney	Eirbaba	248331	1684665		Halo trust
153	634	Gash barka	Akurdet	Akurdet(natsnet)	384245	1720327	797	Halo trust
154	633	D/k/b	D/debubaw	debaysima	223086	1409718		Halo trust
155	632	debub	Senafe	Moko	556676	1627535		Halo trust
156	625	debub	Tsorona	Ferasit	508003	1620031		Halo trust

MF ID	Identification of the area under the jurisdiction or control of the state party in which antipersonnel mines are emplaced or suspected to be emplaced				Geographic coordinate		Size of the area (square meters)	Surveyed by
	Zoba	Sub zoba	Community	Long.	Lat.			
157	624	s/k/b	Nakfa	Dket	448267	1841311	12332	Halo trust
158	623	s/k/b	Nakfa	Gurita	447230	1838789	7758	Halo trust
159	622	S/K/B	Nakfa	Dket	447535	1841010	18359	Halo trust
160	621	S/K/B	Nakfa	Gurita	447317	1838038	40582	Halo trust
161	620	S/K/B	Nakfa	Shmagle	447274	1835396	66427	Halo trust
162	619	S/K/B	Nakfa	Gurita	447480	1838108	20	Halo trust
163	616	Gash barka	Lalay gash	May kokah	339581	1611728		Halo trust
164	615	Gash barka	Lalay gash	May kokah	336732	1609158		Halo trust
165	614	Gash barka	Lalay gash	Habela	349086	1621969		Halo trust
166	606	Gash barka	Lalay gash	Habela	352155	1629907		Halo trust
167	604	Debub	Tsorona	Tsorona	524333	1604907	7325160	Halo trust
168	603	D/K/B	D/D/B	Musa ali	197925	1398217	9046004	Halo trust
169	599	D/K/B	D/D/B	Musa ali	204544	1399105	4839229	Halo trust
170	592	Gash barka	Shambuko	Weldensey	361422.84	1639299.2	2314024	Halo trust
171	590	Debub	Senafe	Geleba	546947	1601761	1233783	Halo trust
172	586	Gash barka	shambuko	shambuko	373179	1642022	10806425	Halo trust
173	584	Gash barka	Lalay gash	Geza gobo	340182	1628301	3911490	Halo trust
174	583	Gash barka	Logo anseba	derseney	326359	1611818	10044272	Halo trust
175	580	S/K/B	Afabet	Kamchwa	463678	1820732		Halo trust
176	579	Debub	Adi keyh	Egla	546978	1634747	38191	Halo trust
177	578	S/K/B	nakfa	ayg	454186	1848943	23979	Halo trust
178	577	Gash barka	Haykota	Adi hamad	371412	150734		Halo trust
179	576	Debub	Dekemhare	endadeqo	390513	150113		Halo trust
180	575	Debub	Dekemhare	Dekemhare zoba 1	390220	150506		Halo trust
181	574	Anseba	Hagaz	Hamelmalo	382743	155528		Halo trust
182	573	S/K/B	Afabet	Afabet	462073	1802086	342	Halo trust
183	572	S/K/B	Afabet	Maybeitot	449087	1798386	83571	Halo trust
184	571	Maekel	Berik	Adi kontsi	385034	152155		Halo trust
185	570	Maekel	Berik	Adi yakob	481301	1699975		Halo trust
186	569	Gash barka	Lalay gash	May kokah	373056	143440		Halo trust
187	568	Gash barka	Lalay gash	May kokah	373104	143445		Halo trust
188	567	Gash barka	Lalay gash	May kokah	372842	143258		Halo trust
189	566	Gash barka	Lalay gash	May kokah	372907	143303		Halo trust

MF ID	Identification of the area under the jurisdiction or control of the state party in which antipersonnel mines are emplaced or suspected to be emplaced				Geographic coordinate		Size of the area (square meters)	Surveyed by
	Zoba	Sub zoba	Community	Long.	Lat.			
190	565	Anseba	Elaberd	Elabered	458508	1735199		Halo trust
191	564	S/K/B	Afabet	Gzgza	383118	160021		Halo trust
192	563	S/K/B	Afabet	Gzgza	383054	160011		Halo trust
193	562	S/K/B	Afabet	Gzgza	383149	160016		Halo trust
194	561	S/K/B	Afabet	Etmerat	446409	1805706	10123	Halo trust
195	560	Debub	Adi keyh	tseberat	536905.96	1642316.8	165189	Halo trust
196	559	Debub	Adi keyh	Adi wegera	537799.91	1643946.5	14614	Halo trust
197	558	Debub	Adi keyh	Adi wegera	537530.54	1644222.6	201042	Halo trust
198	557	Maekel	Serejeka	Kuazien	492402.12	1711357.1		Halo trust
199	556	Maekel	Serejeka	Kuazien	493058.02	1712678	64746	Halo trust
200	555	Gash barka	Laly gash	May kokah	372654	143126		Halo trust
201	526	Debub	Tsorona	Ayba	512820	1618762		Halo trust
202	525	Debub	Tsorona	Endashrifo	513394	1618315		Halo trust
203	524	Debub	Tsorona	Endashrifo	513000	1617614		Halo trust
204	523	Debub	Tsorona	Endashrifo	513985	1616935		Halo trust
205	522	Debub	Tsorona	May agam	515350	1616850		Halo trust
206	521	Debub	Tsorona	May agam	515932	1615066		EDF
207	520	Debub	Tsorona	May agam	516615	1616005	44582	EDF
208	519	Debub	Tsorona	May agam	517238	1616625	40774	EDF
209	518	Debub	Tsorona	Kudo weyba	517505	1615004	34484	EDF
210	517	Debub	Tsorona	Kudo weyba	517807	1614717	24913	EDF
211	516	Debub	Tsorona	Kudo weyba	517994	1614620	26054	EDF
212	515	Debub	Tsorona	Kudo weyba	518971	1613876	101713	EDF
213	514	Debub	Tsorona	Kudo weyba	520157	1613036	60320	EDF
214	513	Debub	Tsorona	Unanazo	521297	1612063	100020	EDF
215	507	Debub	Tsorona	Sebio	522670	1608749		EDF
216	499	Debub	Tsorona	Unashehaqe	523525	1604690		EDF
217	495	Debub	Tsorona	dembhaysh	525116	1602948	45298	EDF
218	494	Debub	Tsorona	dembhaysh	525316	1602731	79985	EDF
219	493	Debub	Tsorona	Tselim qelay	524913	1601860	15087	EDF
220	492	Debub	Tsorona	Tselim qelay	524899	1601295		EDF
221	491	Debub	Tsorona	Tselim qelay	525237	1607162	101125	EDF
222	490	Debub	Tsorona	Tselim qelay	525710	1600780	20724	EDF

MF ID	Identification of the area under the jurisdiction or control of the state party in which antipersonnel mines are emplaced or suspected to be emplaced				Geographic coordinate		Size of the area (square meters)	Surveyed by
	Zoba	Sub zoba	Community	Long.	Lat.			
223	489	Debub	Tsorona	Tselim qelay	525573	1600566		EDF
224	488	Debub	Tsorona	Tselim qelay	525416	1600105		EDF
225	472	Gash barka	Laya gash	Sheshbit	367676	1608276		EDF
226	479	Gash barka	Laya gash	Sheshbit				EDF
227	471	Gash barka	Laya gash	Sheshbit	367098	1607943		EDF
228	462	Gash barka	Laya gash	Sheshbit	360953	1606633		EDF
229	449	Debub	Tsorona	Tselim qelay	525604	1599981		EDF
230	448	Debub	Tsorona	Tselim qelay	526143	1599943		EDF
231	447	Debub	Tsorona	Tselim qelay	526135	1599906		EDF
232	446	Debub	Senafe	Hadish adi	526224	1599075		EDF
233	445	Debub	Senafe	Hadish adi	526110	1598792		EDF
234	444	Debub	Tsorona	Hashaso	526140	1598117		EDF
235	443	Debub	Tsorona	Hashaso	526341	1590974		EDF
236	442	Debub	Tsorona	Hashaso	526678	1596432	41570	EDF
237	441	Debub	Tsorona	Qnto	527511	1595257	12229	EDF
238	438	Gash barka	Molqi	Sheka wedikolela	387434	163633		EDF
239	434	Gash barka	Shambuko	Dembe himbrti	373146	1639542		EDF
240	430	Debub	Tsorona	Qnto	52793200	159487100	46234	EDF
241	428	Debub	Tsorona	Qnto	52825800	1595287		EDF
242	424	Gash barka	Shambuqo	Sabe	37007500	1640186		EDF
243	423	Gash barka	Shambuqo	Sabe	36877900	1639549		EDF
244	422	Gash barka	Shambuqo	Sabe	36813100	16397680		EDF
245	421	Gash barka	Shambuqo	Sabe	36790300	1639684		EDF
246	420	Gash barka	Shambuko	Sabe	367279	1639469		EDF
247	419	Gash barka	Shambuko	Tselim qelay	365747	1639818		EDF
248	418	Gash barka	shambuko	Grime	365035	1640851	2269	EDF
249	417	Gash barka	shambuko	Grime	364663	1641038		EDF
250	413	Gash barka	Lalay gash	edrba	355877	1635693		EDF
251	411	Gash barka	Lalay gash	edrba	354732	1635057		EDF
252	410	Gash barka	Lalay gash	edrba	353996	1634554		EDF
253	409	Gash barka	Lalay gash	edrba	353839	1638874		EDF
254	408	Gash barka	Lalay gash	Adi hakin	351013	1627534		EDF
255	407	Gash barka	Lalay gash	Habela	349625	1623448		EDF

MF ID	Identification of the area under the jurisdiction or control of the state party in which antipersonnel mines are emplaced or suspected to be emplaced				Geographic coordinate		Size of the area (square meters)	Surveyed by
	Zoba	Sub zoba	Community	Long.	Lat.			
256	406	Gash barka	Lalay gash	shilalo	341704	1614647	41171	EDF
257	405	Gash barka	Lalay gash	shilalo	342125	1616246		EDF
258	404	Gash barka	Lalay gash	shilalo	342354	1614301		EDF
259	403	Gash barka	Lalay gash	shilalo	340965	1615702	18727	EDF
260	400	Gash barka	Lalay gash	May kokah	336317	1610549		EDF
261	386	Gash barka	Lalay gash	Mukuti	353168	1585827		EDF
262	356	Gash barka	shambuko	tsbra	377377	1637110		EDF
263	354	Gash barka	shambuko	tsbra	378336	1636215		EDF
264	353	Gash barka	shambuko	tsbra	379174	1636332		EDF
265	351	Gash barka	Lalay gash	Adi hakin	352698	1632223		EDF
266	350	Gash barka	Lalay gash	Adi hakin	352493	1630490		EDF
267	349	Gash barka	mogolo	Adi hakin	352236	1631307		EDF
268	348	Gsha barka	Lalay gash	Adi hakin	352374	1630651		EDF
269	347	Gsha barka	Lalay gash	Adi hakin	351851	1629553		EDF
270	346	Gsha barka	Lalay gash	Adi hakin	351616	1628807		EDF
271	345	Gsha barka	Lalay gash	Adi hakin	351592	1628485		EDF
272	344	Gsha barka	Lalay gash	Adi hakin	351507	1628353		EDF
273	343	Gsha barka	Lalay gash	Adi hakin	348851	1624840	59200	EDF
274	342	Gsha barka	Lalay gash	Adi hakin	350575	1626441		EDF
275	341	Gsha barka	Lalay gash	May kokah	343326	1610315	51309	EDF
276	340	Gsha barka	Lalay gash	May kokah	342350	1609085	22952	EDF
277	339	Debub	Tsorona	Knn	598538	1598768	12261	EDF
278	338	Debub	Tsorona	Adi mesgene	528925	1596045		EDF
279	337	Debub	Tsorona	Adi mesgene	529140	1596700		EDF
280	336	Debub	Tsorona	Adi mesgene	529013	1597290		EDF
281	335	Debub	Tsorona	Adi shhu	529398	1597993		EDF
282	334	Debub	Tsorona	Adi shhu	529676	1598768	43477	EDF
283	333	Debub	maimine	Adi meshal	533071	1600864	12585	EDF
284	332	Debub	Tsorona	Einta	533236	1601507	48456	EDF
285	328	Debub	Senafe	Aregen	538760	1609074	21232	EDF
286	327	Debub	senafe	Geleba	538996	1602084		EDF
287	326	Debub	senafe	Geleba	539482	1602453		EDF
288	325	Debub	senafe	Geleba	540043	1601865		EDF



MF ID	Identification of the area under the jurisdiction or control of the state party in which antipersonnel mines are emplaced or suspected to be emplaced				Geographic coordinate		Size of the area (square meters)	Surveyed by
	Zoba	Sub zoba	Community	Long.	Lat.			
289	324	Debub	senafe	Geleba	540300	1601800		EDF
290	323	Debub	senafe	Geleba	540400	1602000	43168	EDF
291	322	Debub	senafe	Geleba	542200	1601800		EDF
292	321	Debub	senafe	Geleba	542200	1601200		EDF
293	315	Debub	senafe	Tsiena	546935	1602437		EDF
294	314	Debub	senafe	Tsiena	547505	1603365		EDF
295	304	Debub	senafe	Menekuseyto	550000	1604000		EDF
296	302	Debub	senafe	Gerana	556350	1603600		EDF
297	301	Debub	senafe	Gerana	556814	1603765		EDF
298	300	Debub	senafe	Gerana	556779	1603833		EDF
299	299	Debub	senafe	Gerana	557084	1603960		EDF
300	298	Debub	senafe	Kolet	557074	1604284		EDF
301	296	Debub	senafe	kolet	557610	1605685		EDF
302	295	Debub	senafe	kolet	557712	1606453		EDF
303	294	Debub	senafe	kolet	557116	1606395		EDF
304	293	Debub	senafe	kolet	557356	1607615	11183	EDF
305	291	Debub	Adi keyh	Baewa	557593	1567964	71916	EDF
306	282	Debub	Adi quala	Ksad eiqa	477333	1604162	71177	EDF
307	281	Debub	Adi quala	Ksad eiqa	479202	1604381	51457	EDF
308	279	Debub	Adi quala	Adi wesen	500123	1615649	57894	EDF
309	278	Debub	Adi quala	Adi wesen	501283	1617815	20464	EDF
310	275	Debub	Dekemhare	Belesto	511135	1681433	19293	EDF
311	269	Gash barka	Lalay gash	Shilao	347354	1618542		EDF
312	263	Gash barka	Shambuko	Tselim qelay	363574	1640098	75795	EDF
313	261	Gash barka	Shambuko	Tselim qelay	363624	1639854	13049	EDF
314	259	Gash barka	Shambuko	Tselim qelay	363419	1639918	16783	EDF
315	250	d/k/b	d/d/k	bure	421909.03	123401.14	474441	EDF
316	249	d/k/b	d/d/k	bure	421821.22	123504.74	540364	EDF
317	248	Gash barka	Lalay gash	Habela	349193	1623101		EDF
318	247	d/k/b	d/d/k	bure	421726.84	123608.33	446393	EDF
319	246	d/k/b	d/d/k	bure	421638.6	123640.79	339743	EDF
320	245	d/k/b	d/d/k	bure	421606.14	123708.42	260554	EDF
321	243	d/k/b	d/d/k	bure	421518.34	123732.1	286479	EDF

MF ID	Identification of the area under the jurisdiction or control of the state party in which antipersonnel mines are emplaced or suspected to be emplaced				Geographic coordinate		Size of the area (square meters)	Surveyed by
	Zoba	Sub zoba	Community	Long.	Lat.			
322	242	d/k/b	d/d/k	bure	421431.41	123815.96	331490	EDF
323	241	d/k/b	d/d/k	bure	421332.2	123823.42	271316	EDF
324	224	Gash barka	Shambuko	Tsbra	381765	1635948		EDF
325	221	Gash barka	Lalay gash	May kokah	337414	1611070		EDF
326	220	Gash barka	Lalay gash	May kokah	331862	1606778	23807	EDF
327	219	Gash barka	Lalay gash	May kokah	338111	1611528		EDF
328	211	Gash barka	Lalay gash	Adi bgdi	373035.69	144639.45	345187	EDF
329	210	Gash barka	Lalay gash	Adi bgdi	373131.33	144711.66	413764	EDF
330	209	Gash barka	Lalay gash	Shilalo	343470	1617312		EDF
331	208	Gash barka	Lalay gash	Edrba	373213.93	144805.71	520639	EDF
332	207	Gash barka	Lalay gash	Edrba	373309.31	144834.73	354656	EDF
333	206	Gash barka	Lalay gash	Edrba	373410.01	144917.32	470341	EDF
334	205	Gash barka	Lalay gash	Edrba	373456.06	144949.8	347020	EDF
335	204	Gash barka	Lalay gash	May kokah	334027	1608425	24437	EDF
336	200	Gash barka	Lalay gash	Adi hakin	350978	1626990		EDF
337	195	Gash barka	Lalay gash	shilalo	373732.07	143820.27	665623	EDF
338	187	Gash barka	Lalay gash	shilalo	346000	1617688		EDF
339	182	Gash barka	Lalay gash	shilalo	342993	1616657	42240	EDF
340	181	Gash barka	Lalay gash	May kokah	339083	1612499	4730	EDF
341	180	Gash barka	Lalay gash	shilalo	345634	1618368		EDF
342	179	Gash barka	Lalay gash	Hadamu	330470	1606433	10432	EDF
343	175	Gash barka	Shambuko	sabe	374625	145024.84	700758	EDF
344	174	Gash barka	Shambuko	sabe	374530.96	144926.8	721554	EDF
345	172	Gash barka	Lalay gash	May kokah	339916	1614515	35340	EDF
346	171	Gash barka	Shambuko	Tselim qelay	374339.41	144930.53	362947	EDF
347	170	Gash barka	Shambuko	Tselim qelay	374242.7	144925.21	433981	EDF
348	151	Gash barka	Omhajer	Omhajer	363640.91	142112.85	1339383	EDF
349	150	Gash barka	Omhajer	Omhajer	363506.62	141959.17	773514	EDF
350	149	Gash barka	Omhajer	Omhajer	393239.69	141954.78	900923	EDF
351	148	Gash barka	Omhajer	Omhajer	364221.25	142106.27	1669661	EDF
352	147	Gash barka	Omhajer	Omhajer	364100.55	142145.75	1300942	EDF
353	146	Gash barka	Omhajer	Omhajer	363900	142212	2160010	EDF
354	145	Maekel	d/mibrak	Asmara	385641	151845		Halo trust

MF ID	Identification of the area under the jurisdiction or control of the state party in which antipersonnel mines are emplaced or suspected to be emplaced			Geographic coordinate		Size of the area (square meters)	Surveyed by	
	Zoba	Sub zoba	Community	Long.	Lat.			
355	144	Gash barka	Omhajer	Omhajer	363844.7	142138.46		Halo trust
356	143	S/K/B	Massawa	Massawa(grav)	392502	153639		Halo trust
357	142	Debub	Tsorona	Tsorona	391209.58	143834.33		Halo trust
358	141	Gash barka	Lalay gash	May kokah	332924	1606241		Halo trust
359	140	Gash barka	Omhajer	Omhajer	363848	142002	5803	Halo trust
360	139	Gash barka	Haykota	Alebu	365006.6	151225.2		Halo trust
361	138	Gash barka	shambuko	Binbina	374511.34	145742.84		Halo trust
362	137	Gash barka	Lalay gash	May kokah	373023.4	143415		Halo trust
363	136	Debub	tsorona	Endabastifanos	390417	143908		Halo trust
364	135	Debub	Senafe	Senafe	392240	143630		Halo trust
365	134	Gash barka	Lalay gash	May kokah	373014.4	143405.4		Halo trust
366	133	Debub	maimine	Ksad qoday	384102.69	142817.82		Halo trust
367	132	Gash barka	Lalay gash	Adi hakin	375620	151126		Eda
368	131	D/K/B	M/D/K	EDI	414047.3	135554.58		Halo trust
369	130	Gash barka	Lalay gash	Habela	373558.25	144118.91		Halo trust
370	129	Gash barka	Molqi	Dembe kuakuat	380217.4	144521.8		Halo trust
371	128	Gash barka	Lalay gash	shilalo	373529.92	143910.63		Halo trust
372	127	Debub	tsorona	Endabastifanos	390337.39	143859.36		Halo trust
373	126	Debub	tsorona	Endabastifanos	390911.58	143954.99		Halo trust
374	125	Debub	Maimine	Ksad qoday	384104.54	142833.9		Halo trust
375	124	Debub	Maimine	Adi abaqat	383555.16	142725.89		Halo trust
376	123	Debub	Maimine	Adi abaqat	383523.57	142720.1		Halo trust
377	122	Debub	Maimine	Ksad qoday	384019.2	142901.8		Halo trust
378	121	Debub	Tsorona	Wlsho	391445.47	143935.6		Halo trust
379	120	Gash barka	Lalay gash	May kokah	372832.75	143258.81		Halo trust
380	119	Gash barka	Lalay gash	May kokah	372859.75	143247.72	34420	Halo trust
381	118	Gash barka	Lalay gash	May kokah	372859.85	143247.72	1275	Halo trust
382	117	Gash barka	Omhajer	Omhajer	363827	142122.8		Halo trust
383	116	Debub	Senafe	senafe	392515.39	144232.28		Halo trust
384	115	Debub	Tsorona	Tsorona	390708.14	144503.92		Halo trust
385	114	Debub	Senafe	senafe	392521.67	144321.74		Halo trust
386	113	Gash barka	Haykota	Adi hamad	371407.82	150737.79		Halo trust
387	112	Gash barka	Mogolo	Deret	374931.2	152016.8		Halo trust

MF ID	Identification of the area under the jurisdiction or control of the state party in which antipersonnel mines are emplaced or suspected to be emplaced				Geographic coordinate		Size of the area (square meters)	Surveyed by
	Zoba	Sub zoba	Community	Long.	Lat.			
388	111	Gash barka	Mogolo	Deret	374931.2	152016.8		Halo trust
389	110	Gash barka	shambko	Kuluku	373714.4	145715		Halo trust
390	109	Gash barka	shambko	Fode	373506	145416.8		Halo trust
391	108	Gash barka	shambko	Fode	373506	145416.8		Halo trust
392	107	Gash barka	mogolo	Mogolo	373719.8	151701.8		Halo trust
393	106	Gash barka	mogolo	Mogolo	373828.8	151900		Halo trust
394	105	Gash barka	Barentu	Barentu(selam	373657	150721		Halo trust
395	104	Gash barka	Mogolo	Deret	375128	151732		Halo trust
396	103	Anseba	Elaberd	Elaberd	383717	154150		Halo trust
397	102	Debub	Mendefera	Mendefera (zoba mereb)	383402.4	145805.4		Halo trust
398	101	Anseba	Keren	Keren	383001.8	154624.6		Halo trust
399	100	Debub	Areza	Adi samra	383452	145746		Halo trust
400	99	S/K/B	Ghinda	Ghinda	390602.4	152709		Halo trust
401	98	Debub	Areza	Deqi werasi	383620	145616		Halo trust
402	97	S/K/B	Ghinda	Ghinda	390002.4	152709.6		Halo trust
403	96	S/K/B	Massawa	Massawa(grav)	391824	15360500		Halo trust
404	95	S/K/B	Ghinda	May atal	391421	153403		Halo trust
405	94	S/K/B	Massawa	Massawa(grav)	392734.8	153921.6		Halo trust
406	93	S/K/B	Massawa	Massawa(grav)	392500.6	154302.4		Halo trust
407	92	S/K/B	Massawa	Massawa(grav)	392500.6	154302.4		Halo trust
408	91	S/K/B	Foro	Foro	393629.4	151533		Halo trust
409	90	Mackel	Galaneffi	Shegrni	390010	152223		Halo trust
410	88	Debub	Senafe	Senafe	392308	144036		Halo trust
411	87	S/K/B	FORO	FORO	393401	151650		Halo trust
412	86	Debub	Senafe	Senafe	392502.38	144144.78		Halo trust
413	85	S/K/B	Afabet	Wed Ezaz	383939	163857		Halo trust
414	84	S/K/B	FORO	FORO	393456.84	151623.12		
415	83	Debub	Adi Keyh	Adi keih	392239.98	145015.94	81949	Halo trust
416	82	Debub	Tsorona	Wlsho	391445	143936		Halo trust
417	81	Debub	Tsorona	Tsorona				Halo trust
418	80	Debub	Tsorona	May agam	391141	143843		Halo trust
419	79	S/K/B	FORO	FORO	393730	151513		Halo trust

MF ID	Identification of the area under the jurisdiction or control of the state party in which antipersonnel mines are emplaced or suspected to be emplaced				Geographic coordinate		Size of the area (square meters)	Surveyed by
	Zoba	Sub zoba	Community	Long.	Lat.			
420	78	S/K/B	Massawa	Massawa(grav)	392618	153745		Halo trust
421	77	S/K/B	Massawa	Massawa(grav)	392710	153659		Halo trust
422	76	Debub	Adi keyh	Adi kieh	392251	145035		Halo trust
423	75	Anseba	Hagaz	Bhaymanot	382457	154507		Halo trust
424	74	Debub	Dekemhare	Dekemhare(zoba 1)	390259	150712		Halo trust
425	73	S/K/B	Ghinda	Embatkala	390437.02	152319	4583	Halo trust
426	72	S/K/B	Ghinda	Embatkala	390434	152317	6416	Halo trust
427	71	Gash barka	Akurdet	Akurdet(natsnet)	375323	153317		Halo trust
428	70	Gash barka	Akurdet	Akurdet	375127	153217		Halo trust
429	69	Gash barka	Akurdet	Engerne	380340	153747		Halo trust
430	68	Gash barka	Akurdet	Engerne	380120	153313		Halo trust
431	67	Gash barka	Akurdet	Akurdet	375323	153317		Halo trust
432	66	Debub	Senafe	Senafe	392517.3	144055.49		Halo trust
433	65	Debub	Dekemhare	Dekemhare(zoba 1)	390301	150418		Halo trust
434	64	Gash barka	Akurdet	Akurdet	375323	153317		Halo trust
435	63	Debub	Dekemhare	Dekemhare	390247	150416		Halo trust
436	62	Gash barka	Akurdet	Akurdet	375323	153317		Halo trust
437	61	Debub	Senafe	Adi ageb	392542	144346		Halo trust
438	60	Maekel	D/mibrak	Asmara	384923	152302		Halo trust
439	59	Maekel	Berik	Adi kontsi	385039	152111		Halo trust
440	58	Gash barka	Shambuko	Tsezega	384613	152049		Halo trust
441	57	Maekel	Berik	Adi kontsi	385026	152117	21543	Halo trust
442	56	Maekel	D/mibrak	Asmara	385837	151648		Halo trust
443	55	Debub	Dekemhare	Dekemhare(zoba 1)	385501	150151		Halo trust
444	54	Gash barka	Gogne	Gogne	372021	150701		Halo trust
445	53	Debub	Dekemhare	Dekemhare(zoba 1)	390409	150043		Halo trust
446	52	Debub	Adi keyh	Tseberat	392250	145043	20787	Halo trust
447	51	Debub	Adi quala	Adi quala	384944	143816		Halo trust
448	50	Anseba	Keren	Keren	382439	154739		Halo trust
449	49	Anseba	Keren	Jfa	382808	154458		Halo trust
450	48	Anseba	Keren	Keren	382739	154448		Halo trust
451	47	Anseba	Keren	Keren	383732	154128		Halo trust
452	46	Debub	Dbarwa	Tala	384345	150802		Halo trust

MF ID	Identification of the area under the jurisdiction or control of the state party in which antipersonnel mines are emplaced or suspected to be emplaced			Geographic coordinate		Size of the area (square meters)	Surveyed by	
	Zoba	Sub zoba	Community	Long.	Lat.			
453	45	Debub	Dbarwa	Adi nahbay laelay	384140	150628		Halo trust
454	44	Debub	Adi quala	Adi quala	383817	142903		Halo trust
455	43	Gash barka	Logo anseba	Meqerka	384158	151524		Halo trust
456	42	Gash barka	L/anseba	Meqerka	384307	152416		Halo trust
457	41	Gash barka	L/anseba	Meqerka	384307	152416		Halo trust
458	40	Anseba	Elaberd	Elaberd	383754	154121		Halo trust
459	39	Anseba	Elaberd	Elaberd	384227	154002		Halo trust
460	38	Anseba	Keren	Keren	382951	154703		Halo trust
461	37	Debub	Segeneity	Adi hadid	391340	145734		Halo trust
462	36	Debub	Segeneity	Segeneity	391050	150242		Halo trust
463	35	Debub	Segeneity	Segeneity	391029	150316		Halo trust
464	32	Debub	Areza	Areza	383150	145512	45980	Halo trust
465	31	Anseba	Halhal	Abdat melebso	381226	160547		Halo trust
466	29	Anseba	Elaberd	Halibmentel	383228	154421	1286	Halo trust
467	28	Anseba	Halhal	Abdat melebso	381529	160048		Halo trust
468	27	Gash barka	Lalay gash	Shilalo	373215.8	143543.1	241818	Halo trust
469	26	Anseba	Halhal	Abdat melebso	381214	160503		Halo trust
470	25	Anseba	Elaberd	Wesbensruq	383107	154652.01		Halo trust
471	24	Anseba	Elaberd	Besuqe	383014	154653		Halo trust
472	23	Anseba	Adi tekelizan	Adi tekelizan	384611	153414		Halo trust
473	22	Anseba	Adi tekelizan	Adi qerets	384700	153444	11770	Halo trust
474	21	Anseba	tekelizan	Deqemhare	384851	153415	99455	Halo trust
475	20	Gash barka	Barentu	Amari	374228	150916	73417	Halo trust
476	19	Gash barka	Barentu	Barentu(selam	373317	150636		Halo trust
477	18	Gash barka	Barentu	Barentu(selam	373623	150821	1418366	Halo trust
478	17	Gash barka	Barentu	Barentu(selam	373623	150821		Halo trust
479	16	Gash barka	Barentu	Barentu(selam	373500	150803		Halo trust
480	15	Gash barka	Barentu	Barentu(selam	373624	150649		Halo trust
481	14	Maekel	Serejeka	Zagr	385414	153313		Halo trust
482	13	Maekel	Serejeka	Zagr	385425	153245	16275	Halo trust
483	12	Maekel	Serejeka	Zagr	385311	153354	46288	Halo trust
484	11	Maekel	Serejeka	Zagr	385425	153245	5933	Halo trust
485	10	Maekel	Serejeka	Zagr	385315	153352		Halo trust

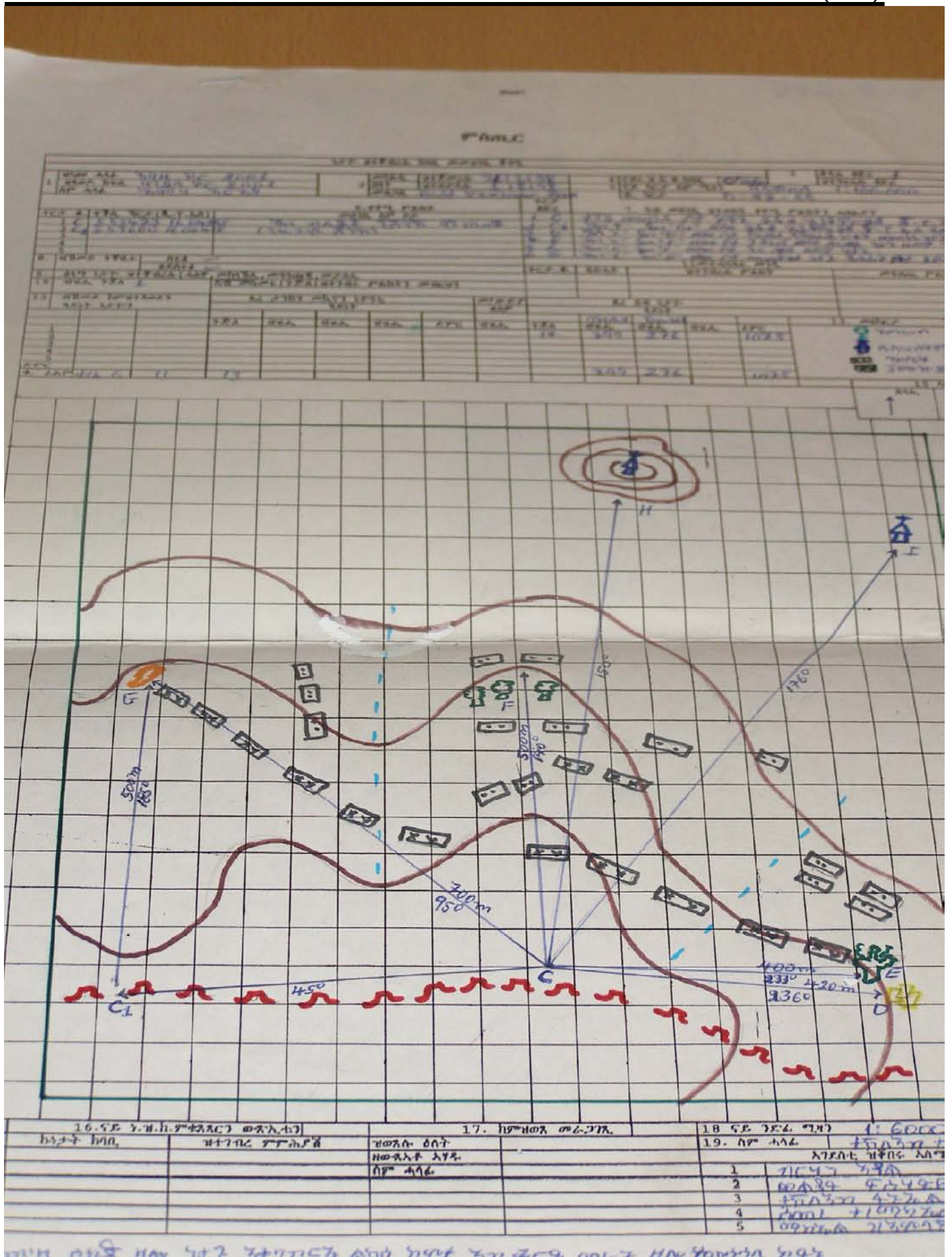
MF ID	Identification of the area under the jurisdiction or control of the state party in which antipersonnel mines are emplaced or suspected to be emplaced				Geographic coordinate		Size of the area (square meters)	Surveyed by
	Zoba	Sub zoba	Community	Long.	Lat.			
486	9	Maekel	Serejeka	Zagr	385425	153245		Halo trust
487	8	Gash barka	Tesseney	Tesseney(meskere m)	364210	145300		Halo trust
488	7	Gash barka	Tesseney	Tesseney(meskere m)	364004	150425		Halo trust
489	6	Gash barka	Tesseney	Tesseney(meskere m)	363955	150450	1410490	Halo trust
490	5	Maekel	Serejeka	Kuazien	385557	152921		Halo trust
491	4	Maekel	Serejeka	Kuazien	385505	152747	16152	Halo trust
492	3	Maekel	Serejeka	Kuazien	385534	152815	18298	Halo trust
493	2	Maekel	Serejeka	Kuazien	492074.04	1710404.7	6129	Halo trust
494	1	Maekel	Serejeka	Kuazien	385559	152820		Halo trust

## ANNEX 4: MINE CLEARANCE PROGRESS IN ERITREA

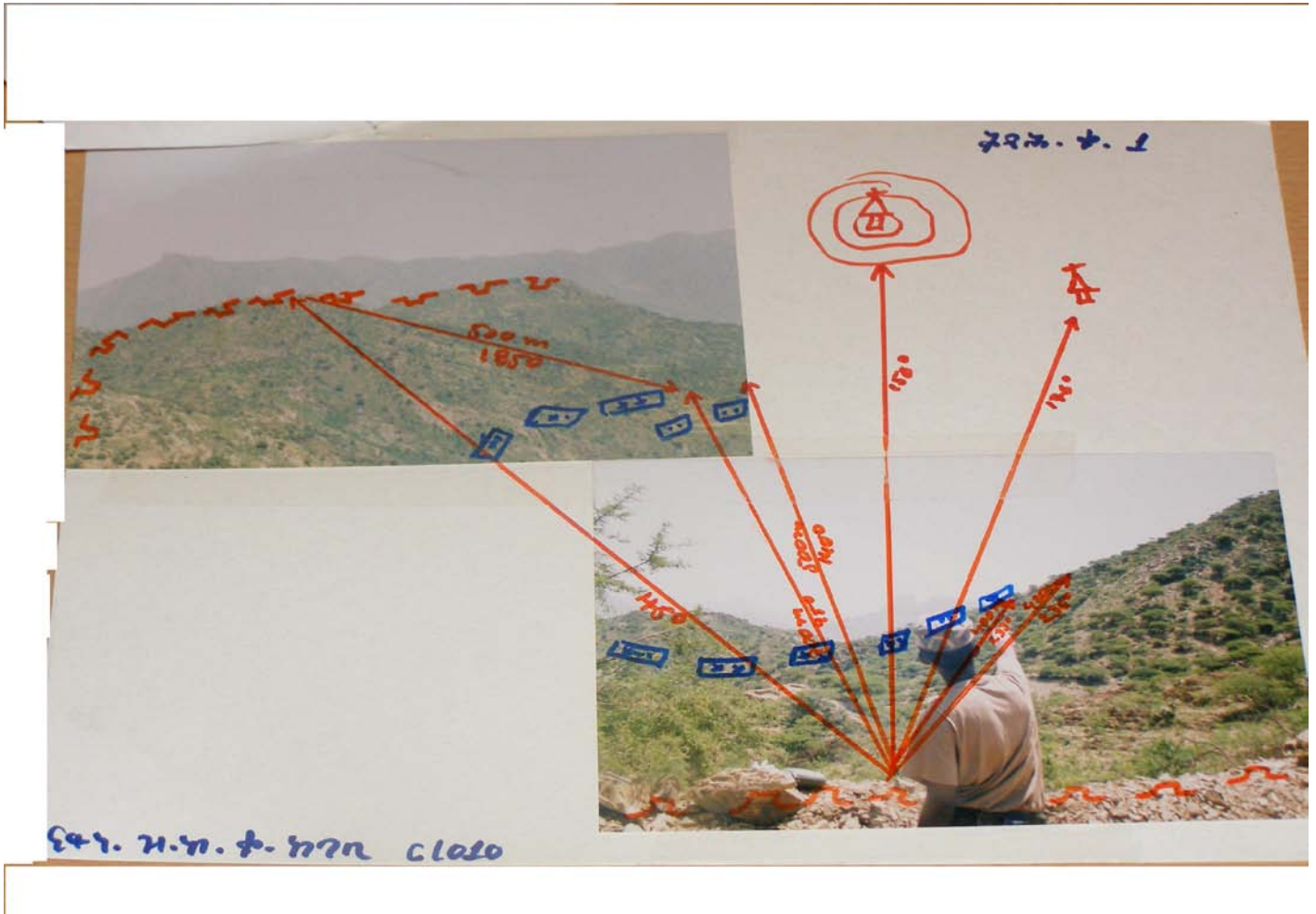
Anseba									
			Elabered	Easting	Northing	Cleared area	AP	AT	UXO
1	Anseba	Elabered	Elabered	38.638208	15.687965	23'156	45	24	1'346
2	Anseba	Elabered	Elabered	39.638208	16.687965	34'132	90	23	567
3	Anseba	Elabered	Elabered	40.638208	17.687965	96'543	104	21	345
4	Anseba	Elabered	Elabered	41.638208	18.687965	123'432	81	18	1'124
keren									
5	Anseba	Keren	Jfa	38.473668	15.773783	284'788	85	1	12
6	Anseba	Keren	Jfa	39.473668	16.773783	100'000	109	1	15
7	Anseba	Keren	Jfa	40.473668	17.773783	228'071	48		24
Debub									
8	Debub	Senafe	Mesahl Akran	39.320290	14.481896	153'000	78	NIL	797
9	Debub	Senafe	Adi Yanguliare	39.449158	14.734074	140'000	75	NIL	550
10	Debub	Senafe	Adi Ageb	39.435689	14.734419	135'000	75	NIL	450
11	Debub	Senafe	Mal Hadega	39.473467	14.733818	410'485	25	12	4'253
12	Debub	Senafe	Tsha	39.446317	14.725648	42'879	180	11	566
13	Debub	Senafe	Tsha	40.446317	15.725648	46'844	120	10	2'631
14	Debub	Senafe	Tsha	41.446317	16.725648	72062	77	12	1
15	Debub	Senafe	Tsha	42.446317	17.725648	57'000	63	NIL	500
16	Debub	Senafe	Tsha	43.446317	18.725648	83'289	90	2	900
17	Debub	Senafe	Tsha	44.446317	19.725648	214'957	43	NIL	6
18	Debub	Senafe	Tsha	45.446317	20.725648	50'000	57	NIL	5
19	Debub	Senafe	Tsha	46.446317	21.725648	161063	104	5	120
20	Debub	Senafe	Tsha	47.446317	22.725648	80'459	60	10	170
21	Debub	Senafe	Tsha	48.446317	23.725648	50'000	144	5	234
22	Debub	Senafe	Tsha	49.446317	24.725648	127'000	78	3	127
23	Debub	Senafe	Tsha	50.446317	25.725648	112'000	90	5	103
24	Debub	Senafe	Tsha	51.446317	26.725648	288'192	102	11	112
25	Debub	Senafe	Tsha	52.446317	27.725648	118'897	94	4	123
26	Debub	Senafe	Tsha	53.446317	28.725648	84'895	91	4	248
27	Debub	Senafe	Tsha	54.446317	29.725648	213'302	42	3	180
28	Debub	Senafe	Tsha	55.446317	30.725648	104'785	72	1	203
29	Debub	Senafe	Tsha	56.446317	31.725648	89'321	48	8	102
30	Debub	Senafe	Tsha	57.446317	32.725648	127.893	67	9	124
31	Debub	Senafe	Tsha	58.446317	33.725648	57'450	64	12	178
32	Debub	Senafe	Tsha	59.446317	34.725648	115'567	49	10	122
33	Debub	Senafe	Tsha	60.446317	35.725648	54'067	46	9	234
34	Debub	Senafe	Tsha	61.446317	36.725648	98.732	67	4	154
35	Debub	Senafe	Tsha	62.446317	37.725648	132'062	52	13	64
36	Debub	Senafe	Tsha	63.446317	38.725648	105'451	89	NIL	105
37	Debub	Senafe	Tsha	64.446317	39.725648	35'324	32	1	632
38	Debub	Senafe	Tsha	65.446317	40.725648	142'672	96	11	67
39	Debub	Senafe	Tsha	66.446317	41.725648	89'456	53	8	532
40	Debub	Senafe	Tsha	67.446317	42.725648	287'741	97	4	234



41	Debub	Senafe	Tsha	68.446317	43.725648	70'789	82	2	167
42	Debub	Tsorona	Chemra meque	39.117531	14.654778	229'378	32	3	236
43	Debub	Tsorona	Dbi	39.147814	14.638465	56'317	45	4	389
44	Debub	Tsorona	Dbi	40.147814	15.638465	170'252	78	8	1'314
45	Debub	Tsorona	Dbi	41.147814	16.638465	126'456	73	10	34
46	Debub	Tsorona	Dbi	42.147814	17.638465	221'089	50	6	115
<b>Gash Barka</b>									
47	Gash Barka	Lalay Gash	Shilalo	37.584508	14.646737	1'481'122	41	7	2'825
48	Gash Barka	Lalay Gash	Shilalo	38.584508	15.646737	435'217	92	1	162
49	Gash Barka	Lalay Gash	Shilalo	39.584508	16.646737	1'959'383	91	8	1'569
50	Gash Barka	Lalay Gash	Shilalo	40.584508	17.646737	624'779	470	4	420
51	Gash Barka	Lalay Gash	Shilalo	41.584508	18.646737	1'895'587	84	13	7'335
52	Gash Barka	Lalay Gash	Shilalo	42.584508	19.646737	3'447'189	15	4	2'019
53	Gash Barka	Lalay Gash	Enda Gabr	37.457823	14.527563	971'386	28	28	535
54	Gash Barka	Lalay Gash	May Kokah	37.507214	14.568971	7'590'636	1'513	13	3'046
55	Gash Barka	Lalay Gash	May Kokah	38.507214	15.568971	4'196'926	1'248	34	3'669
56	Gash Barka	Lalay Gash	May Kokah	39.507214	16.568971	6'800'000	817	252	4'011
57	Gash Barka	Lalay Gash	May Kokah	40.507214	17.568971	5'077'919	356	124	1'566
58	Gash Barka	Lalay Gash	May Kokah	41.507214	18.568971	2'960'966	464	74	450
59	Gash Barka	Lalay Gash	May Kokah	42.507214	19.568971	4'110'290	107	16	447
60	Gash Barka	Lalay Gash	May Kokah	43.507214	20.568971	120'000	70	8	620
61	Gash Barka	Shambuqo	Adimaeil	37707386	14771208	68000	78	33	2'034
<b>Semenawi Keih Bahri</b>									
62	SKB	Foro	Malka	39.562351	15.281369	30'000	80		
63	SKB	Foro	Robrobya	39.487377	15.289222	46'784	214	3	6'988
64	SKB	Foro	Fatma Are	39.491644	15.288150				
65	SKB	Foro	Foro	39.626850	15.254699	44'278	94		291
66	SKB	Foro	Foro	39.607135	15.286963	66'745	20		5
67	SKB	Foro	Wedege	39.696403	15.218305	42014	35	8	560
68	SKB	Foro	Unga	39.626470	15.252714	58715	290	12	3'452
69	SKB	Massawa	Massawa (Adis Alem)	39.447665	15.620755	44'278	84	9	342
70	SKB	Massawa	Massawa (Emkuli)	39.397392	15.581894	66'784	38	3	1'124
71	SKB	Massawa	Massawa (Emkuli)	39.374143	15.606008	52'067	71	1	1'042
72	SKB	Massawa	Dogali	39.339281	15.607444				
73	SKB	Massawa	Hirghigo	39.432618	15.504322	55'328	23	4	236
74	SKB	Massawa	Hirghigo	39.455869	15.529729	45'768	57	2	967
75	SKB	Massawa	Hirghigo	39.425142	15.571604	51'234	45	6	345
76	SKB	Massawa	Massawa (Edaga)	39.450269	15.616684	56'783	34	6	2'341
77	SKB	Massawa	Massawa (Kapamarta)	39.449101	15.617220	84'532	56	4	231
78	SKB	Afabet	Gulbub	38.525320	16.143137	6'606'796	216	13	121
<b>Maekel</b>									
79	Maekel	serejeka	Mdri zawl	38.926412	15461202	<b>2120</b>	7		33
80	Maekel	serejeka	Geremi	38867365	15463161	<b>2500</b>	8		53
81	Maekel	serejeka	Kuazen	38928796	15496000	<b>19035</b>	8		47
<b>TOTAL</b>						<b>54'735'011</b>	<b>10'296</b>	<b>998</b>	<b>69'401</b>

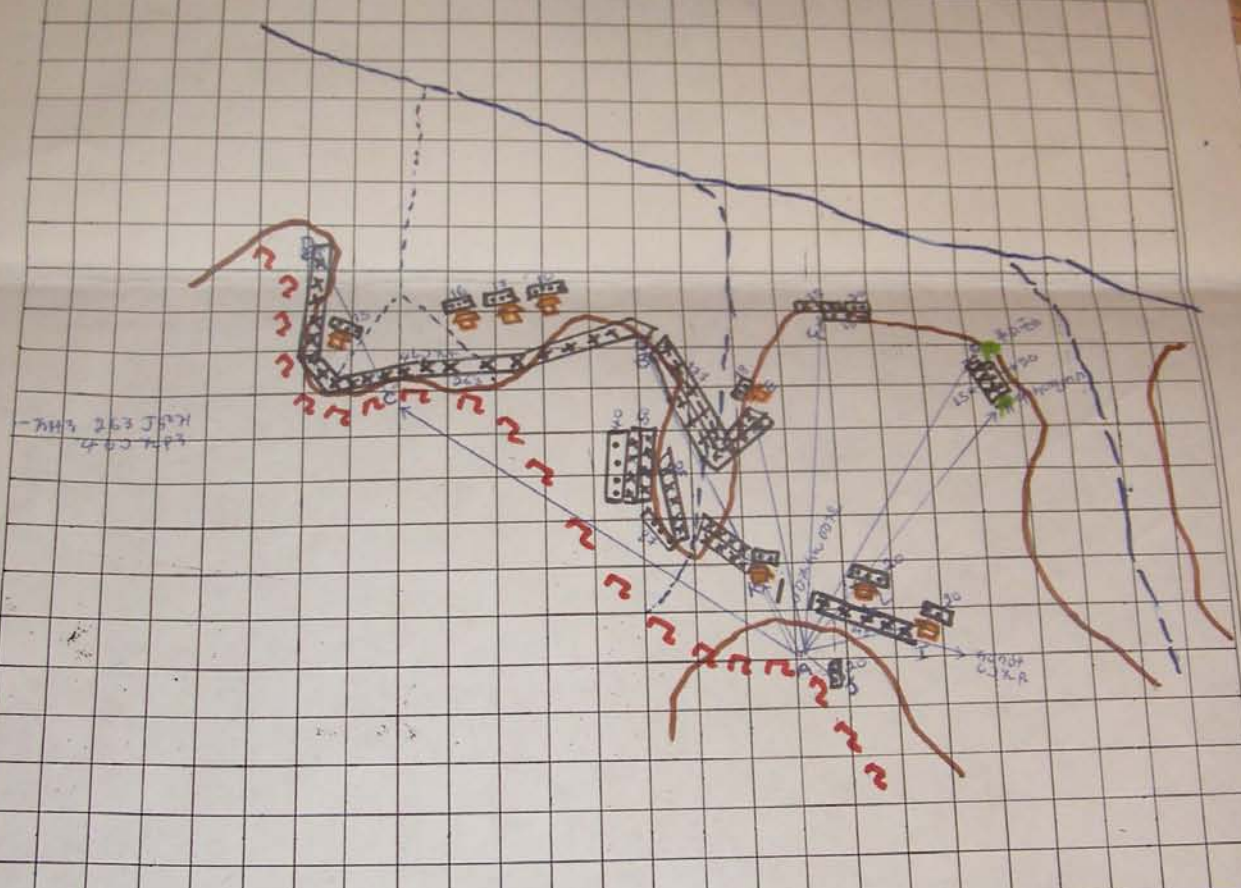


EDF MINE FIELD PICTURE SKETCH NO. 1



የሰዓሊ

ቁጥር	የቦታ ስም	የቦታ አይነት	የቦታ መጠን	የቦታ አካባቢ
1	አዲስ አበባ	የግዥ ክፍለ-ዞን	1000 ሜትር	የግዥ ክፍለ-ዞን
2	አዲስ አበባ	የግዥ ክፍለ-ዞን	1000 ሜትር	የግዥ ክፍለ-ዞን
3	አዲስ አበባ	የግዥ ክፍለ-ዞን	1000 ሜትር	የግዥ ክፍለ-ዞን
4	አዲስ አበባ	የግዥ ክፍለ-ዞን	1000 ሜትር	የግዥ ክፍለ-ዞን
5	አዲስ አበባ	የግዥ ክፍለ-ዞን	1000 ሜትር	የግዥ ክፍለ-ዞን
6	አዲስ አበባ	የግዥ ክፍለ-ዞን	1000 ሜትር	የግዥ ክፍለ-ዞን
7	አዲስ አበባ	የግዥ ክፍለ-ዞን	1000 ሜትር	የግዥ ክፍለ-ዞን
8	አዲስ አበባ	የግዥ ክፍለ-ዞን	1000 ሜትር	የግዥ ክፍለ-ዞን
9	አዲስ አበባ	የግዥ ክፍለ-ዞን	1000 ሜትር	የግዥ ክፍለ-ዞን
10	አዲስ አበባ	የግዥ ክፍለ-ዞን	1000 ሜትር	የግዥ ክፍለ-ዞን



ቦታ	16. የግዥ ክፍለ-ዞን ወረዳ	17. ከምዕራብ ግዥ ክፍለ-ዞን	18. የግዥ ክፍለ-ዞን	19. ከምዕራብ ግዥ ክፍለ-ዞን
1	አዲስ አበባ	አዲስ አበባ	አዲስ አበባ	አዲስ አበባ
2	አዲስ አበባ	አዲስ አበባ	አዲስ አበባ	አዲስ አበባ
3	አዲስ አበባ	አዲስ አበባ	አዲስ አበባ	አዲስ አበባ
4	አዲስ አበባ	አዲስ አበባ	አዲስ አበባ	አዲስ አበባ
5	አዲስ አበባ	አዲስ አበባ	አዲስ አበባ	አዲስ አበባ

A → B	106°	300m	A → I	106°	100m
A → C	76°	400m	A → K	103°	80m
C → B	190°	200m	A → L	170°	70m
A → E	120°	250m	A → J	260°	90m
C → D	98°	150m			
A → F	136°	300m			
A → G	160°	300m			
A → H	168°	250m			

ሰዓሊ ስድስት 386

1. የግዥ ክፍለ-ዞን ስድስት ዘጠነኛ
2. ስድስት ዘጠነኛ ስድስት

PIC . NO.2



